



Overview of the 2020 Census P.L. 94-171 Redistricting Data

23rd Annual New Mexico Data Users Conference
November 29, 2021

Tom Morton
Assistant Chief, Redistricting and Voting Rights Data Office

2020 Census Redistricting Data Program

Public Law 94-171

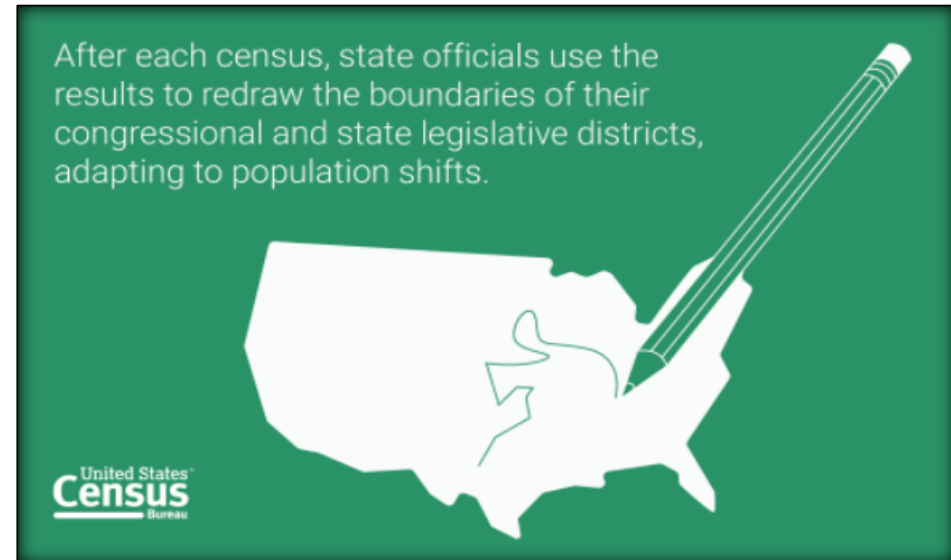
Program Mission: Provide states an opportunity to identify the geographic areas for which specific tabulations of population are needed for legislative redistricting and to deliver high quality data for those areas in a timely manner

Identified “geographic areas desired”:

- Census Tabulation Blocks
- Voting Districts (e.g. precincts, wards, etc.)
- Legislative and Congressional Districts

Requirements:

- Conduct the program in a non-partisan manner
- Establish program criteria
- Identify required tabulations
- Deliver the tabulations to the governor and the officers or public bodies having initial responsibility for the legislative apportionment or districting of each State no later than 1 year from Census Day.



2020 Census Redistricting Data Program

The Five Phases of the Program

- **Phase 1: Block Boundary Suggestion Project (BBSP)**
- **Phase 2: Voting District Project (VTDP)**
- **Phase 3: Data Delivery**
 - P.L. 94-171 Geographic Support Products
 - P.L. 94-171 Redistricting Data Tabulations
- **Phase 4: Collection of Post-2020 Census Redistricting Plans**
 - 118th Congressional District (CD) Plans
 - New State Legislative District (SLD) Plans
 - Solicit new plans from states in January 2022
- **Phase 5: Evaluation of the 2020 RDP ([View from the States](#))**
 - Recommendations from the States
 - Design for the 2030 Census Redistricting Data Program

41258 Federal Register / Vol. 79, No. 135 / Tuesday, July 15, 2014 / Notices

DEPARTMENT OF COMMERCE
Bureau of the Census
[Docket Number 140626541-4541-01]
Establishment of the 2020 Census Redistricting Data Program

AGENCY: Bureau of the Census, Department of Commerce.
ACTION: Notice of Program.

SUMMARY: This notice announces and seeks comments on the establishment of the 2020 Census Redistricting Data Program. Required by law, the program provides states the opportunity to specify the small geographic areas for which they wish to receive 2020 decennial population totals for the purpose of reapportionment and redistricting.

DATES: Comments on this notice are due by September 5, 2014. The deadline for states to notify the Bureau of the Census (Census Bureau) that they wish to participate in Phase 1 of the Block Boundary Suggestion Project (BBSP) is August 1, 2015.

ADDRESSES: Please send all written comments to the Director, U.S. Census Bureau, 4600 S. North Hill, Northridge, CA 91329-1002, Washington, DC 20543, telephone (301) 763-4039.

FOR FURTHER INFORMATION CONTACT: Catherine C. McLaughlin, Chief, Census Redistricting Data Office, U.S. Census Bureau, Room 950-019, Washington, DC 20543, telephone (301) 763-4039.

SUPPLEMENTARY INFORMATION: Under the provisions of Title 13, Section 141(c) of the United States Code (U.S.C.), the Secretary of Commerce (Secretary) is required to provide the "officers or public bodies having initial responsibility for the legislative apportionment or districting of each state . . ." with the opportunity to specify geographic areas (e.g., voting districts) for which they wish to receive decennial census population counts for the purpose of reapportionment or redistricting.

By April 1 of the year following the decennial census, the Secretary is required to furnish the state officials or their designees with population counts for American Indian areas, counties, cities, census blocks, and state-specified congressional, legislative districts, and voting districts.

In accordance with the provisions of 13 U.S.C. 141(c), the Director of the Census Bureau, on behalf of the Secretary of Commerce, announces the establishment of the 2020 Census Redistricting Data Program. The Census Bureau will issue an invitation to the officers or public bodies having initial responsibility for legislative reapportionment and redistricting this fall through the Census Redistricting Data Office inviting states to identify a non-partisan liaison that will work directly with the Census Bureau on the 2020 Census Redistricting Data Program. Once these liaisons are established, the Census Bureau will coordinate communications involving the commencement of the program.

Since the 1990 Census, participation in both the Census Redistricting Data Program's Block Boundary Suggestion Project and Voting District Project (2020 Redistricting Data Program Phases 1 and 2) under 13 U.S.C. is voluntary on the part of each state. However, if states choose not to participate in Phase 1 and 2, the Census Bureau cannot guarantee that the decennial Census 2020 tabulation geography will support the redistricting needs of their state.

Phase 1: Block Boundary Suggestion Project (BBSP)

Beginning in the late summer of 2014, the Census Bureau will correspond with the legislative leadership and executive officer of each state to establish a 2020 Census Redistricting Data Program liaison. The Census Bureau will formally announce through a subsequent Federal Register Notice the commencement of Phase 1, the Block Boundary Suggestion Project (BBSP). The purpose of the BBSP is to afford states the opportunity to identify non-standard features often used as electoral boundaries (such as a powderline or stream, rather than a street centerline which might divide voters into two districts) as census block boundaries. The BBSP option affords the state liaison the opportunity to provide suggestions for 2020 census tabulation block boundaries resulting in more meaningful block data for the state. Liaisons are able to work with local officials including county election officers and others to ensure local geography is represented in the 2020 tabulation block inventory. In addition, the liaison, on behalf of the state, will make suggestions for features not desirable as census tabulation blocks. By identifying undesirable features, the liaison may assist the Bureau in reducing the overall number of census tabulation blocks from the 2010 inventory. Beginning in late fall of 2015, states that choose to participate in Phase 1 will begin receiving guidelines and training for providing their suggestions for the 2020 census tabulation blocks as well as their suggestions for exclusion of line segments for consideration in the

Established July 15, 2014

Redistricting Data Program

Phase 1: BBSP Participation

Phase 1 – Block Boundary Suggestion Project (BBSP) Participation*				
Phase 1 Cycles	Total Number of Participating States	Percent of Participating States	Total Number of Counties Updates	Percent of Counties Updated
Initial Delineation (BBSP)	36	69.2%	1151	35.7%
Verification (BBSPV)	34	65.4%	965	30%
BBSP/BBSPV Total Participation	41	78.8%	1413	43.9%

*Including D.C. and Puerto Rico

Redistricting Data Program

Phase 2: VTDP Participation

Phase 2 – Voting Districting Project (VTDP) Participation*				
Phase 2 Cycles	Total Number of Participating States	Percent of Participating States	Total Number of Counties Updates	Percent of Counties Updated
Initial Delineation (VTD)	45	86.5%	2729	84.7%
Verification I (VTDV1)	47	90.4%	1853	57.5%
Verification II (VTDV2)	37	71.2%	1339	41.6%
VTD/VTDV1/MTD V2 Total Participation *Including D.C. and Puerto Rico	49	94.2%	3099	96.2%

Redistricting Data Program

Phase 3 – P.L. 94-171 Redistricting Data Geographic Support Products

2020 Census P.L. 94-171 Redistricting Data Geographic Products	
Product Type	Description & URL
Shapefiles	Geographic information system geometry files https://www.census.gov/geographies/mapping-files/time-series/geo/tiger-line-file.html
Reference Maps (PDF only)	County Block; State Legislative with Voting District; Census Tract; School District https://www.census.gov/geographies/reference-maps.html
Block Assignment Files	Tables identifying the blocks used to build different geographic entities https://www.census.gov/geographies/reference-files.html
Name Lookup Tables	Contain names and codes for geographic areas within a state https://www.census.gov/geographies/reference-files/time-series/geo/name-lookup-tables.html
Block to Block Relationship Files	Crosswalk of 2010 blocks to 2020 blocks https://www.census.gov/geographies/reference-files/time-series/geo/relationship-files.html

Redistricting Data Program

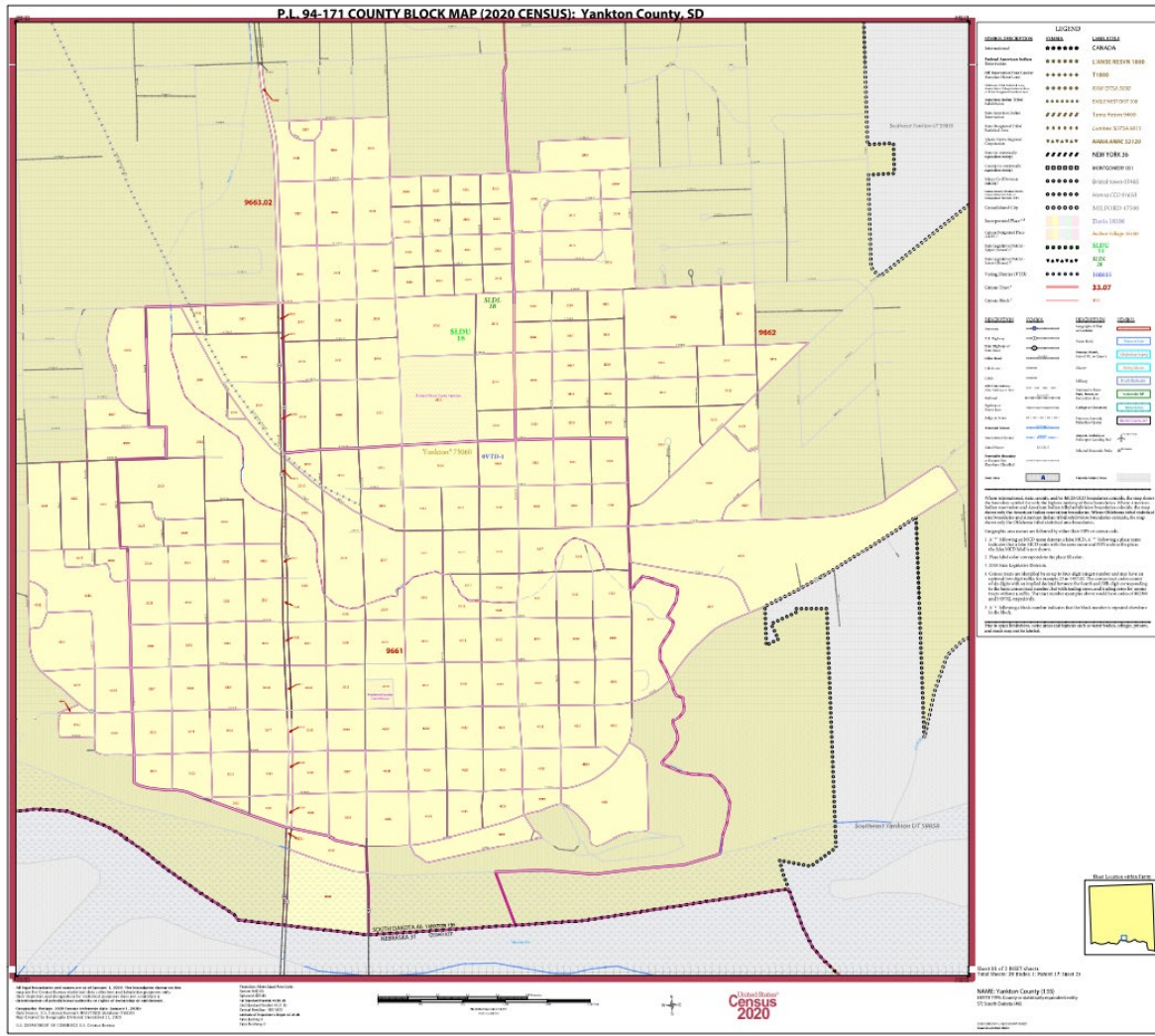
Phase 3 – P.L. 94-171 Redistricting Data Shapefiles

State-based Shapefile
American Indian/Alaska Native/Native Hawaiian Area
American Indian Tribal Subdivision
Alaska Native Regional Corporation
State and Equivalent
Block
Block Group
Census Tract
113th Congressional District
116th Congressional District
Consolidated City
County and Equivalent
County Subdivision
Place
Elementary School District
Secondary School District
Unified School District
State Legislative District Lower Chamber
State Legislative District Upper Chamber
Subbarrio (Subminor Civil Division)
Voting District
Urban Growth Area
Primary and Secondary Roads

County-based Shapefile
Block
Block Group
Census Tract
County Subdivision
Voting District
All Lines
All Roads
Area Hydrography
Linear Water
Area Landmark
Point Landmark
Topological Faces (Polygons With All Geocodes)
County-based Relational Tables
County-based Relationship File
Address Range-Feature Name
Address Ranges
Feature Names
Topological Faces-Area Landmark
Topological Faces-Area Hydrography

Redistricting Data Program

Phase 3 – P.L. 94-171 Maps & Tabular Data



County Block Reference Map

STATEFP	COUNTYFP	COUSUBFP	NAME	NAMELSAD
44	007	11800	Burrillville	Burrillville town
44	007	14140	Central Falls	Central Falls city
44	007	19180	Cranston	Cranston city
44	007	20080	Cumberland	Cumberland town
44	007	22960	East Providence	East Providence city
44	007	27460	Foster	Foster town
44	007	30340	Glocester	Glocester town
44	007	37720	Johnston	Johnston town
44	007	41500	Lincoln	Lincoln town
44	007	51760	North Providence	North Providence town
44	007	52480	North Smithfield	North Smithfield town
44	007	54640	Pawtucket	Pawtucket city
44	007	59000	Providence	Providence city
44	007	64220	Scituate	Scituate town
44	007	66200	Smithfield	Smithfield town
44	007	80780	Woonsocket	Woonsocket city

Name Lookup Table

BLOCKID	COUNTYFP	COUSUBFP
440070001011000	007	59000
440070001011001	007	59000
440070001011002	007	59000
440070001011003	007	59000
440070001011004	007	59000
440070001011005	007	59000
440070001011006	007	59000
440070001011007	007	59000
440070001011008	007	59000
440070001011009	007	59000
440070001011010	007	59000
440070001011011	007	59000
440070001011012	007	59000
440070001011013	007	59000
440070001011014	007	59000

Block Assignment File

Redistricting Data Program

Phase 3 – P.L. 94-171 Redistricting Data Tabulation Product

2020 Census P.L. 94-171 Redistricting Data Tabulations

Table P1 – Race

Table P2 – Hispanic or Latino, and not Hispanic or Latino by Race

Table P3 – Race for the Population 18 Years and Over

Table P4 – Hispanic or Latino, and not Hispanic or Latino by Race for the Population 18 Years and Over

Table H1 – Occupancy Status (Housing)

New Table

Table P5 – Group Quarters Population by Group Quarters Type

- All tables produced at multiple geographies including census block
- Group Quarter types: Correctional Institutions for Adults, Juvenile Facilities, Nursing Facilities/Skilled Nursing, Other Institutional, College/University Student Housing, Military quarters, and other non-institutional
- Group quarters is total population only, no demographic breakdown

Redistricting Data Program

P.L. 94-171 Redistricting Data Tabulation Product

Table P1 – Race

Universe: Total Population

Table P3 – Race for the Population 18 Years and Over

Universe: Total population 18 years and over

RACE [71]
Universe: Total population
Total:
Population of one race:
White alone
Black or African American alone
American Indian and Alaska Native alone
Asian alone
Native Hawaiian and Other Pacific Islander alone
Some Other Race alone
Two or More Races:
Population of two races:
White; Black or African American
White; American Indian and Alaska Native
White; Asian
White; Native Hawaiian and Other Pacific Islander
White; Some Other Race
Black or African American; American Indian and Alaska Native
Black or African American; Asian
Black or African American; Native Hawaiian and Other Pacific Islander
Black or African American; Some Other Race
American Indian and Alaska Native; Asian
American Indian and Alaska Native; Native Hawaiian and Other Pacific Islander
American Indian and Alaska Native; Some Other Race
Asian; Native Hawaiian and Other Pacific Islander
Asian; Some Other Race
Native Hawaiian and Other Pacific Islander; Some Other Race
Population of six races:
White; Black or African American; American Indian and Alaska Native; Asian; Native Hawaiian and Other Pacific Islander; Some Other Race



Redistricting Data Program

P.L. 94-171 Redistricting Data Tabulation Product

Table P2 – Hispanic or Latino, and Not Hispanic or Latino by Race

Universe: Total population

Table P4 – Hispanic or Latino, and Not Hispanic or Latino by Race for the Population 18 Years and Over

Universe: Total population 18 years and over

HISPANIC OR LATINO, AND NOT HISPANIC OR LATINO BY RACE [73]

Universe: *Total population*

Total:

Hispanic or Latino

Not Hispanic or Latino:

Population of one race:

White alone

Black or African American alone

American Indian and Alaska Native alone

Asian alone

Native Hawaiian and Other Pacific Islander alone

Some Other Race alone

Two or More Races:

Population of two races:

White; Black or African American

White; American Indian and Alaska Native

White; Asian

White; Native Hawaiian and Other Pacific Islander

White; Some Other Race

Black or African American; American Indian and Alaska Native

Black or African American; Asian

Black or African American; Native Hawaiian and Other Pacific Islander

Black or African American; Some Other Race

American Indian and Alaska Native; Asian

American Indian and Alaska Native; Native Hawaiian and Other Pacific Islander

American Indian and Alaska Native; Some Other Race

Asian; Native Hawaiian and Other Pacific Islander

Asian; Some Other Race

Native Hawaiian and Other Pacific Islander; Some Other Race



Population of six races:

White; Black or African American; American Indian and Alaska Native; Asian; Native Hawaiian and Other Pacific Islander; Some Other Race

Redistricting Data Program

P.L. 94-171 Redistricting Data Tabulation Product

Table H1 – Occupancy Status

Universe: Housing Units

- Total
 - Occupied
 - Vacant



Table P5 - Group Quarters Population by Group Quarters Type

Universe: Total Population in Group Quarters

- Total
 - Institutionalized population
 - Correctional facilities for adults
 - Juvenile facilities
 - Nursing facilities/Skilled-nursing facilities
 - Other institutional facilities
 - Noninstitutionalized population
 - College/University student housing
 - Military quarters
 - Other non-institutional facilities

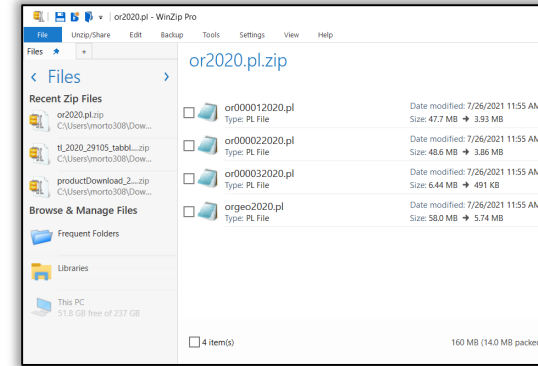
Redistricting Data Program

P.L. 94-171 Redistricting Data Formats

NOTE: Data values are the same regardless of format

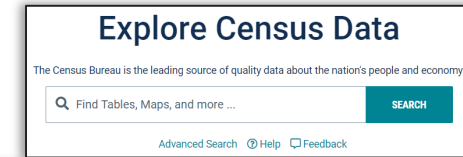
Legacy Format Summary Files – [Summary Files](#)

- The full P.L. 94-171 Redistricting Data Summary Files.
- ZIP file downloads are state-based and include a geographic header and three data segments.
- Require additional handling to properly extract data.
- Support materials are available to help data users work with the Legacy Files.



[Data.census.gov](https://data.census.gov) – data.census.gov

- User-friendly data dissemination tool.
- Allows for custom filtering to view, map, and download data of interest.
- Additional 2020 Census data products will be released to the platform.



Application Programming Interface (API) –

- New users need to request an API Key – [Key Signup \(census.gov\)](https://census.gov).
- API Call: `api.census.gov/data/2020/dec/pl`.
- Example Calls are provided – [Census Data API: /data/2020/dec/pl/examples](https://census.gov/data/2020/dec/pl/examples).

Label	Total	Census Tract 6099.01, Howard Count...	Census Tract 6099.05, How...	Census Tract 6099.05, Ho...
Population of one race:	5,349	3,377	6,841	6,841
White alone	5,274	3,264	4,411	4,411
Black or African American alone	2,864	1,811	3,535	3,535
American Indian and Alaska Native alone	1,815	1,322	1,697	1,697
Asian alone	23	13	33	33
Native Hawaiian and Other Pacific Islander alone	326	516	695	695
Some Other Race alone	11	5	0	0
Two or More Races	233	99	211	211
Population of two races:	275	211	233	233
White, Black or African American	247	184	215	215
White, American Indian and Alaska Native	99	59	64	64
White, Asian	15	10	18	18
White, Native Hawaiian and Other Pacific Islander	36	35	71	71
White, Some Other Race	3	1	0	0
Black or African American, American Indian and Alaska N...	30	20	14	14
Black or African American, Asian	24	22	19	19
Black or African American, Native Hawaiian and Other Pa...	10	22	7	7
Black or African American, Some Other Race	3	1	0	0
Black or African American, American Indian and Alaska N...	5	4	3	3
American Indian and Alaska Native, Asian	0	1	3	3

Redistricting Data Program


Public Law 94-171 Legacy Format Summary Files

Support Materials – [Decennial Census P.L. 94-171 Redistricting Data Summary Files](#)

- 2020 Census State Redistricting (P.L. 94-171) Summary File Technical Documentation
- Header File – Excel Format
 - Tabs for the header of each file which can be imported into other software or used within Excel
 - Tabs with plain English definition for the headers
- Microsoft Access database shell
 - Tables shells for each file
 - Example queries to demonstrate query logic and provide practice
 - Illustrated step-by-step guide on how to use the Microsoft Access database shell
 - Video tutorial on how to use the Microsoft Access database shell
- SAS & R scripts for import of the Legacy Format Summary Files

Redistricting Data Program

QuickFacts Application - [U.S. Census Bureau QuickFacts: United States](#)



[What's New & FAQs >](#)

QuickFacts

Carlsbad city, New Mexico; Santa Fe city, New Mexico; Doña Ana County, New Mexico; Bernalillo County, New Mexico; New Mexico; United States

QuickFacts provides statistics for all states and counties, and for cities and towns with a *population of 5,000 or more*.

-- Select a fact --

CLEAR

TABLE

MAP

CHART

DASHBOARD

MORE

Table

All Topics
▼

Q Carlsbad city, New Mexico
✕

Q Santa Fe city, New Mexico
✕

Q Doña Ana County, New Mexico
✕

Q Bernalillo County, New Mexico
✕

Q New Mexico
✕

United States
✕

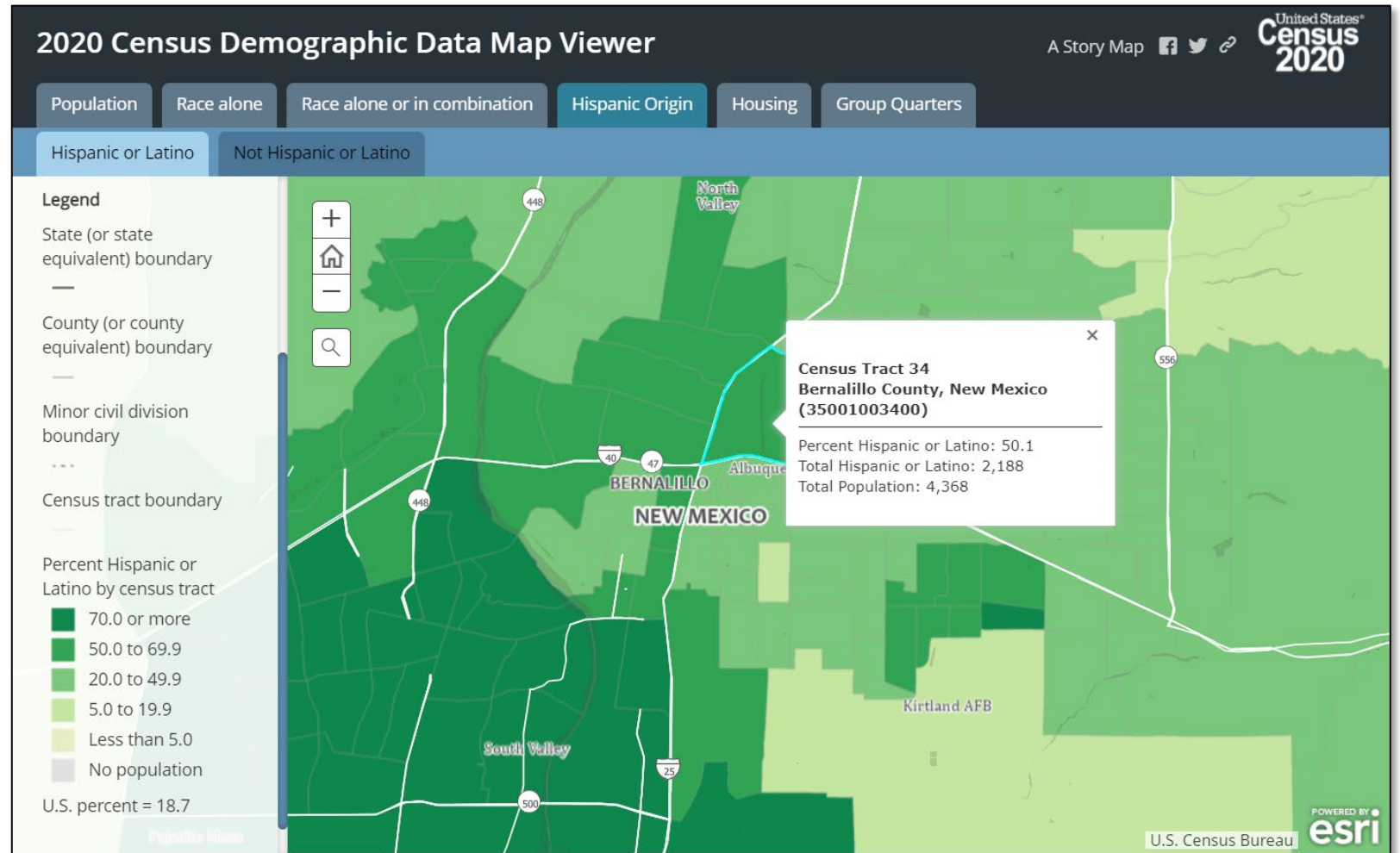
PEOPLE						
Population						
i Population estimates, July 1, 2019, (V2019)	29,810	84,683	218,195	679,121	2,096,829	328,239,523
i Population estimates base, April 1, 2010, (V2019)	26,251	80,871	209,217	662,477	2,059,199	308,758,105
i Population, percent change - April 1, 2010 (estimates base) to July 1, 2019, (V2019)	13.6%	4.7%	4.3%	2.5%	1.8%	6.3%
i Population, Census, April 1, 2020	32,238	87,505	219,561	676,444	2,117,522	331,449,281
i Population, Census, April 1, 2010	26,138	67,947	209,233	662,564	2,059,179	308,745,538

Redistricting Data Program

2020 Census Demographic Data Map Application

2020 Census Demographic Data Map App

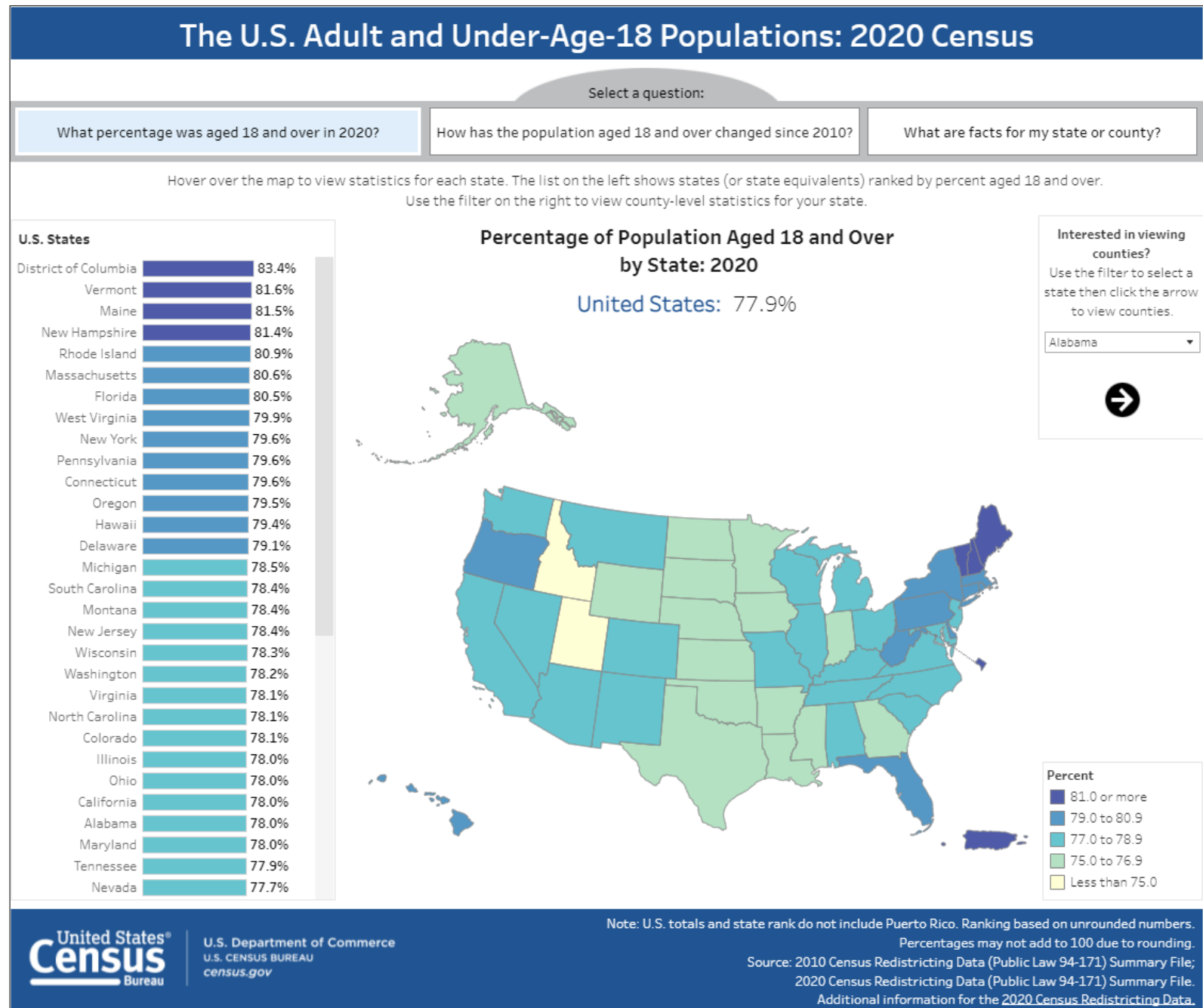
- Published with the Legacy Format Summary Files' release.
- App features 2020 P.L. population, race/ethnicity and housing data for states, counties and tracts.
- The geographies are scale dependent (disaggregate geographies populate as the user zooms in).



Link: [2020 Census Demographic Data Map Viewer](#)

Redistricting Data Program Tableau Visualizations

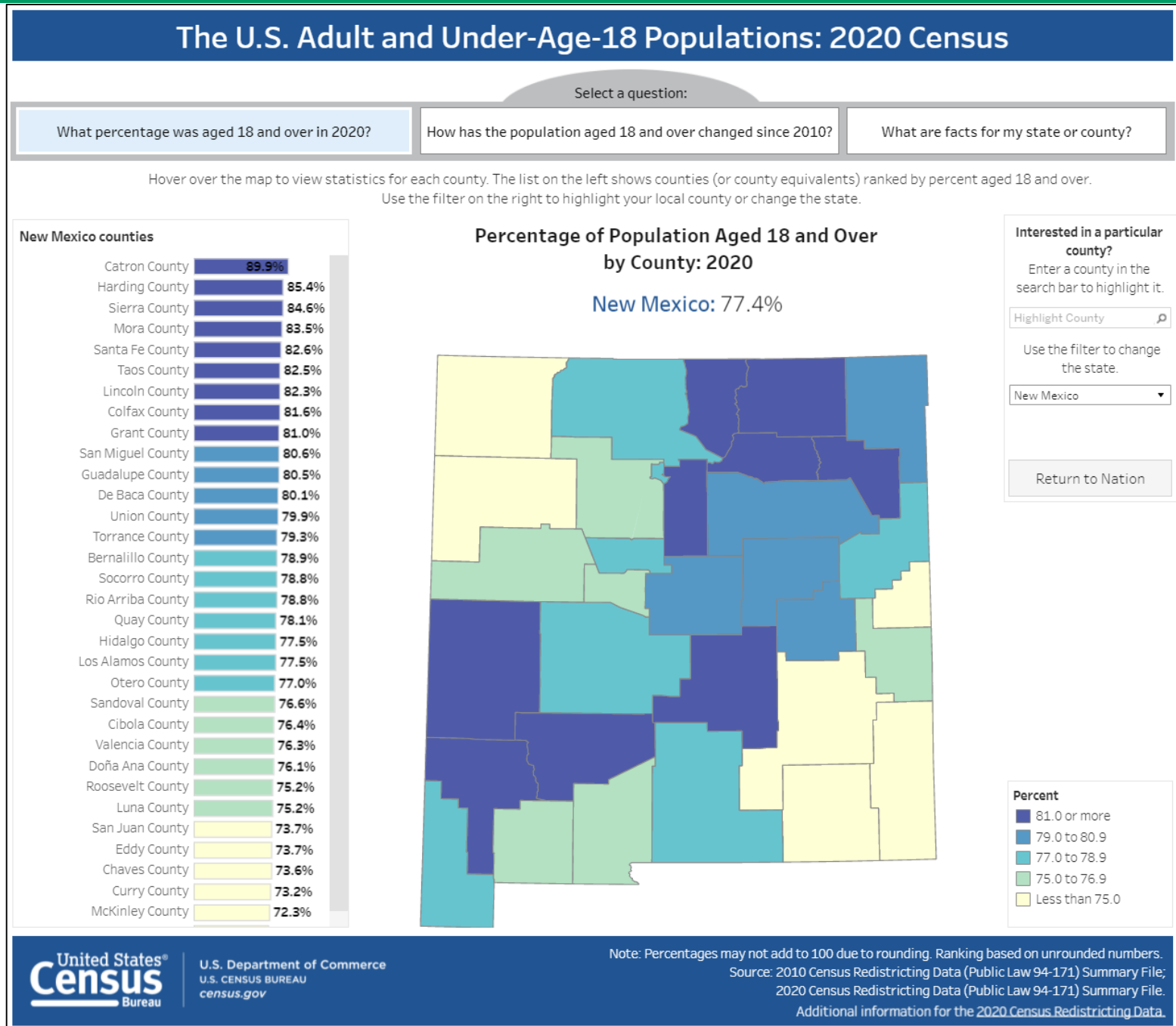
- Published with the Legacy Format Summary Files' release.
- Create maps and ranking lists interactively for States and Counties
- Types
 - Population 18 and over/under
 - Race and Ethnicity in the United States: 2010 Census and 2020 Census
 - Racial and Ethnic Diversity in the U.S.: 2010 Census and 2020 Census



Redistricting Data Program

Tableau Visualizations

- Published with the Legacy Format Summary Files' release.
- Create maps and ranking lists interactively for States and Counties
- Types
 - Population 18 and over/under
 - Race and Ethnicity in the United States: 2010 Census and 2020 Census
 - Racial and Ethnic Diversity in the U.S.: 2010 Census and 2020 Census



Redistricting Data Program – Tableau Visualizations

The U.S. Adult and Under-Age-18 Populations: 2020 Census

Select a question:

What percentage was aged 18 and over in 2020?

How has the population aged 18 and over changed since 2010?

What are facts for my state or county?

Use the state and county filters and click the arrow to change the geographies in the table:

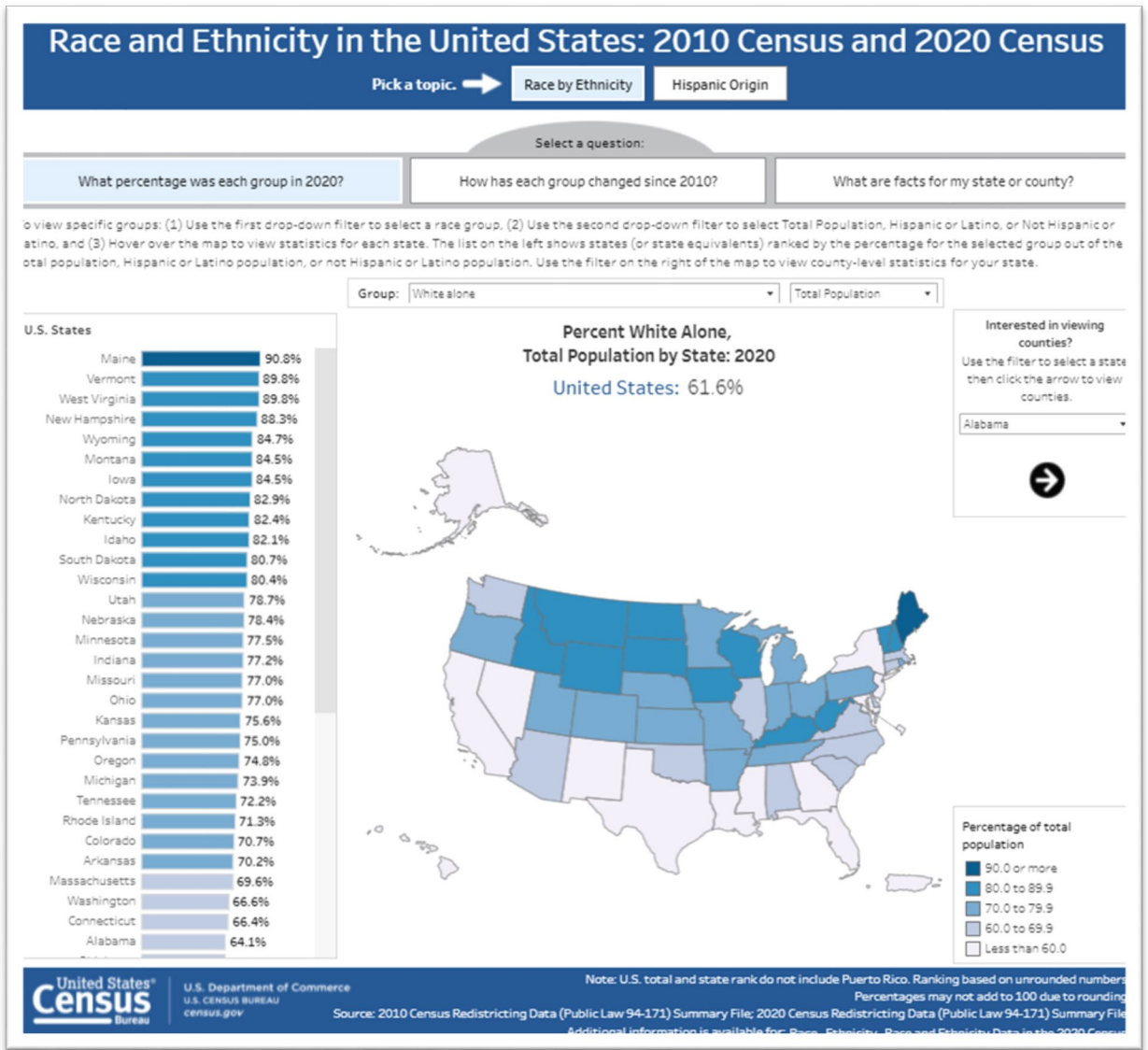
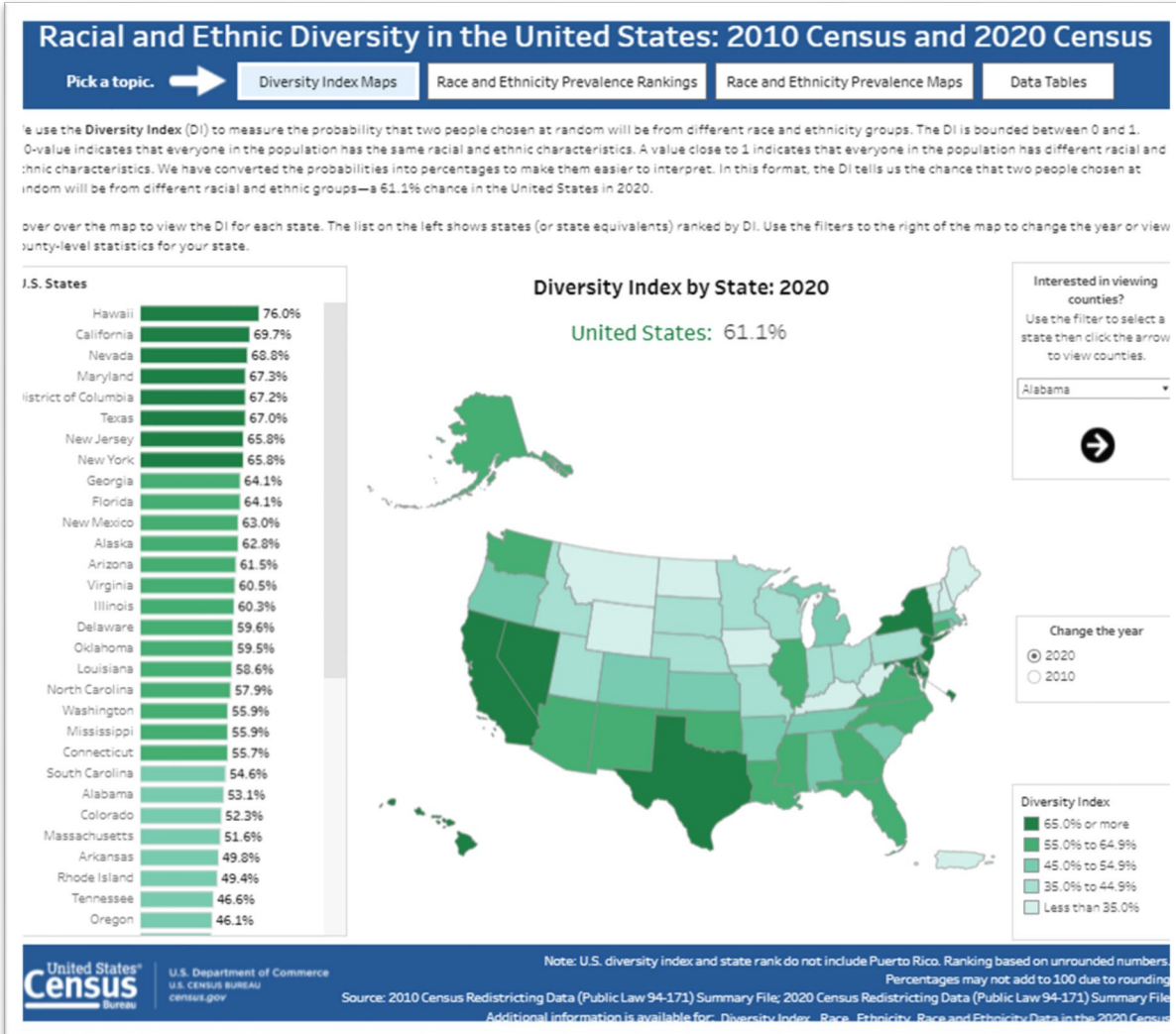
State

County

United States		New Mexico		Valencia County, New Mexico	
Population		Population		Population	
2020 total population	331,449,281	2020 total population	2,117,522	2020 total population	76,205
2010 total population	308,745,538	2010 total population	2,059,179	2010 total population	76,569
Aged 18 and Over		Aged 18 and Over		Aged 18 and Over	
Population change	23,779,210	Population change	98,482	Population change	1,752
Percent change	10.1%	Percent change	6.4%	Percent change	3.1%
2020 population	258,343,281	2020 population	1,638,989	2020 population	58,139
2020 percent	77.9%	2020 percent	77.4%	2020 percent	76.3%
2010 population	234,564,071	2010 population	1,540,507	2010 population	56,387
2010 percent	76.0%	2010 percent	74.8%	2010 percent	73.6%
Under the Age of 18		Under the Age of 18		Under the Age of 18	
Population change	-1,075,467	Population change	-40,139	Population change	-2,116
Percent change	-1.4%	Percent change	-7.7%	Percent change	-10.5%
2020 population	73,106,000	2020 population	478,533	2020 population	18,066
2020 percent	22.1%	2020 percent	22.6%	2020 percent	23.7%
2010 population	74,181,467	2010 population	518,672	2010 population	20,182
2010 percent	24.0%	2010 percent	25.2%	2010 percent	26.4%

Redistricting Data Program

Tableau Visualizations



Redistricting Data Program State Profiles

- Published 8/25/2021, after the Legacy Format Summary File's release.
- Available for all 50 states, the District of Columbia, and Puerto Rico.
- State specific profiles and visualizations of key demographic characteristics and trends.

<https://www.census.gov/library/stories/state-by-state.html>



POPULATION

ALABAMA: 2020 Census

The Yellowhammer State's population increased 5.1% to 5,024,279 from 2010 to 2020.



POPULATION

ALASKA: 2020 Census

The Last Frontier State was the least densely populated state in 2020 with a population of 733,391 (1.3 people per square mile), up 3.3% from 2010.



POPULATION

ARIZONA: 2020 Census

The Grand Canyon State's population grew 11.9% to 7,151,502 from 2010 to 2020.



POPULATION

ARKANSAS: 2020 Census

The Natural State's population grew 3.3% to 3,011,524 from 2010 to 2020.



POPULATION

CALIFORNIA: 2020 Census

The Golden State's population was 39,538,223 in 2020, a 6.1% increase since 2010 but slower than its 10% gain in the previous decade.



POPULATION

COLORADO: 2020 Census

The Centennial State's population was 5,773,714 in 2020, making it one of 13 states and the District of Columbia that grew by 10.0% or more from 2010 to 2020.



Redistricting Data Program

Where to get the data

WWW.CENSUS.GOV/RDO

Official Data & Legacy
format summary file
support materials

Accordion menu of all
things redistricting (e.g.,
Data Tools,
Visualizations, Blog
posts, News)

DECENNIAL CENSUS OF POPULATION AND HOUSING

Why a Census?

History of the Census

Census in the
Constitution

Decennial and the
American Community
Survey (ACS)

Coverage Measurement

Local Update of Census
Addresses Operation
(LUCA)

New Construction
Program

Participant Statistical
Areas Program (PSAP)

Redistricting

Voting Rights

Related Sites

< **Back to About the
Decennial Census**



Redistricting Data Program

REDISTRICTING & VOTING RIGHTS DATA OFFICE (RDO@CENSUS.GOV OR 301-763-4039)



Data

May 05, 2017 | CRVRDO

Redistricting Data Program Congressional Districts

Guidance and access to information about congressional districts and congressional district products.

May 08, 2017 | CRVRDO

Redistricting Data Program State Legislative Districts

Guidance and access to information about state legislative districts and state legislative district products.

August 12, 2021 | CRVRDO

Decennial Census P.L. 94-171 Redistricting Data Summary Files

Includes the official data, documentation, and support materials to assist in accessing P.L. 94-171 Redistricting Data.

Program Information

March 16, 2021 | Redistricting & Voting Rights Data Office (Rdo@Census.Gov Or 301-763-4039)

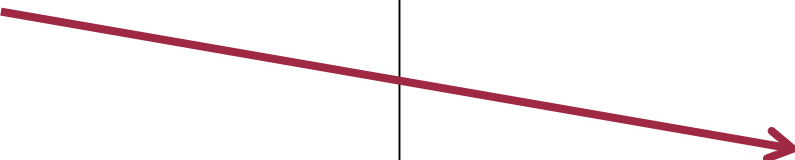
Redistricting Data Program Management

Guidance about and for participation in the Redistricting Data Program for the current and past Decennial Censuses.

Explaining the 2020 Census Redistricting Data

EXPAND ALL | COLLAPSE ALL

▼ **About the 2020 Redistricting Data Product**



2020 Census Data Products

Upcoming 2020 Census Data Product Releases

Demographic Profile – Planned release in 2022. This product will provide selected demographic and housing characteristics about local communities such as 5-year age groups, sex, race, Hispanic or Latino origin, household type, relationship to householder, group quarters population, housing occupancy and housing tenure.

Demographic and Housing Characteristics File (DHC) – Planned release in 2022. This product will include some of the demographic and housing tables previously included in the 2010 Census Summary File 1 (SF1) on topics such as age, sex, race, Hispanic or Latino origin, household type, family type, relationship to householder, group quarters population, housing occupancy and housing tenure. Some tables will be iterated by race and ethnicity.

Detailed Demographic and Housing Characteristic File (Detailed DHC) – Release schedule TBD. This product will provide population counts, as well as demographic and housing statistics for detailed racial and ethnic groups, and American Indian and Alaska Native tribes and village groups. Previously, these types of statistics were included in the 2010 Census Summary File 2 (SF2) and American Indian and Alaska Native Summary File (AIANSF). In addition, the Detailed DHC will include a few tables from the 2010 Census SF1 that are not included in the 2020 DHC.

Count Question Resolution Program

Count Question Resolution

The purpose of the 2020 Census CQR is to provide a mechanism for governmental units to request a review of their official 2020 Census results and to help ensure that housing and population counts are correctly allocated to 2020 census tabulation blocks in the 50 states, District of Columbia and Puerto Rico.

The current schedule is as follows:

- December 2021: The Census Bureau plans to officially notify tribal, state and local government officials eligible to file CQR cases.
- January 2022: The Census Bureau begins accepting CQR cases for processing from eligible tribal, state and local governments.
- June 30, 2023: Deadline for governments to send CQR cases to the Census Bureau.
- September 30, 2023: Deadline for the Census Bureau to provide results to impacted governmental units.

Note: These dates are subject to change.

[Federal Register Notice - 2020 Census Count Question Resolution \(CQR\) Operation](#)

Shape
your future
START HERE >

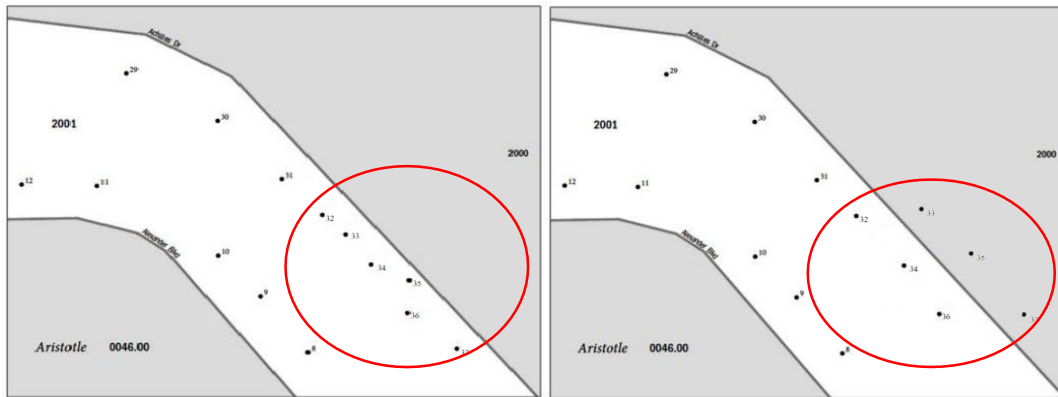
United States[®]
Census
2020

Count Question Resolution Program

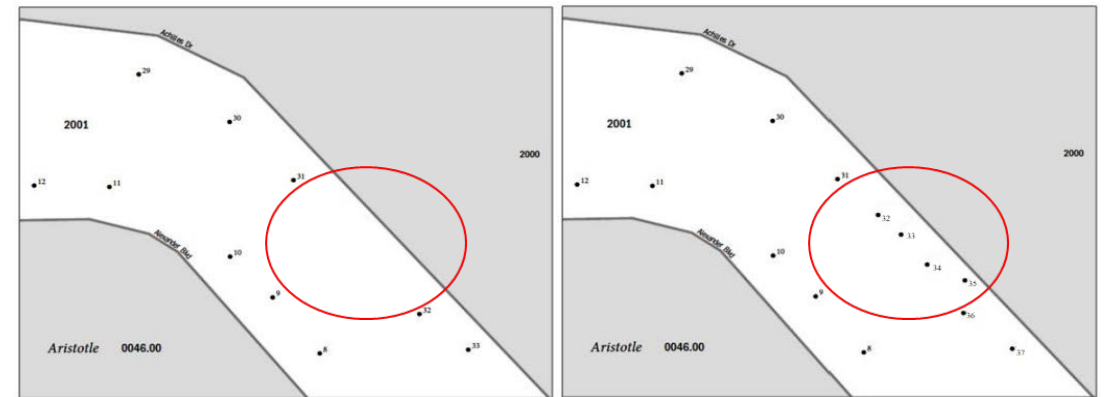
Count Question Resolution

Before and After – Examples of Corrections (**Examples show fictitious information**)

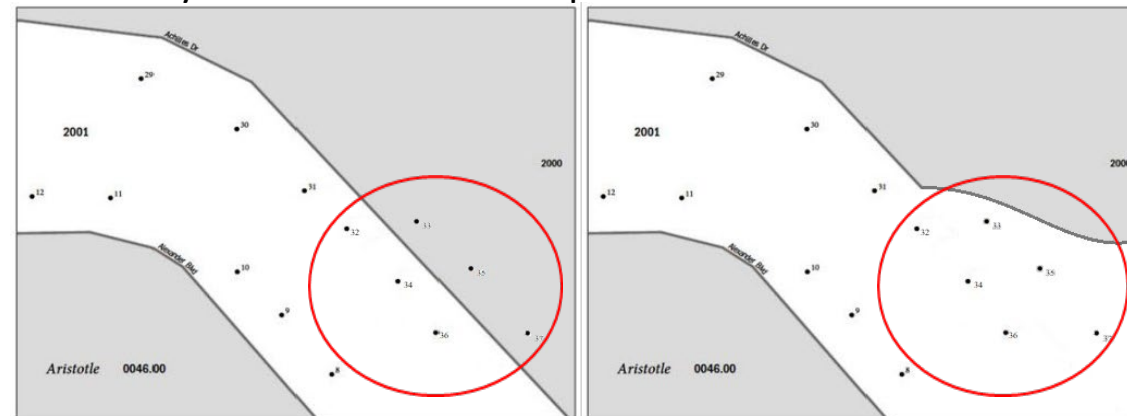
Living Quarter Count case, Geocoding correction example:



Living Quarter Count case, Coverage correction example:



Boundary case correction example:



Thank You

Tom Morton

Assistant Chief – Census Redistricting & Voting Rights Data Office

U.S. Department of Commerce
U.S. Census Bureau
4600 Silver Hill Rd.
Suitland, Maryland 20746

Email: rdo@census.gov

Phone: (301) 763-4039

Web: www.census.gov/rdo





Census Fundamentals

Decennial Census of Population and Housing

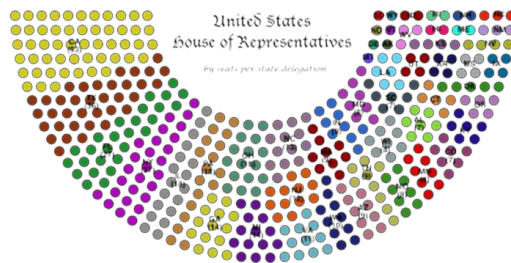
Why do we take the census?

Mandated by Article 1, Section 2 of the U.S. Constitution.

Data are used to determine congressional representation.

States use data to redraw congressional and legislative districts.

Federal funds, grants and support to tribal, state and local governments.



Who is counted in the census?

The census counts every person living in the U.S. once, only once, and in the right place.

For the 2020 Census...

- 67% of households self responded.
- 32.9% of households were enumerated in Nonresponse Followup (NRFU).
- Total of 99.9% of households enumerated.

Census Fundamentals

Census Geography

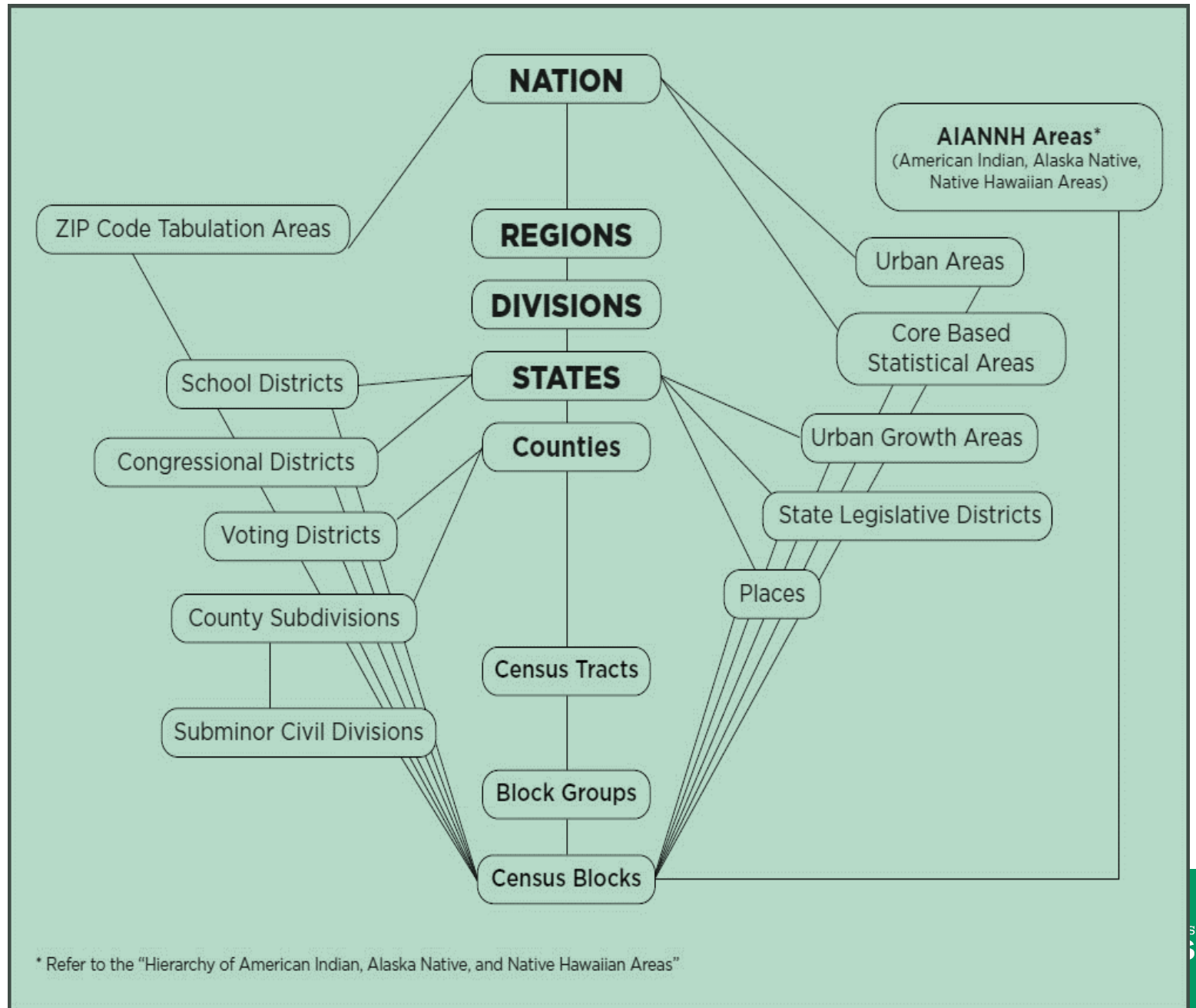
Standard Hierarchy of Census Geographic Entities

Hierarchy displays how legal, administrative, and statistical boundaries related to one another.

Geographic relationships are depicted with a line connection.

Census Blocks are the smallest components of census geography.

Census Blocks are aggregated up to form all other census geographies.



Apportionment Data vs. Redistricting Data

		APPORTIONMENT	REDISTRICTING
Geography	Largest	State	State
	Smallest	State	Census Block
Who is counted		Resident Population + Federally Affiliated Count Overseas	Resident Population Only
What is reported		Total Population only	Race, ethnicity, and select housing characteristics
Disclosure Avoidance		None	Differentially Private (TopDown Algorithm)
Current Timeline		Released April 26, 2021	Legacy Format – Released August 12, 2021 States Receive DVDs/USBs – Sept 16, 2021 Data Release to data.census.gov – Sept 16, 2021

Redistricting Data Program

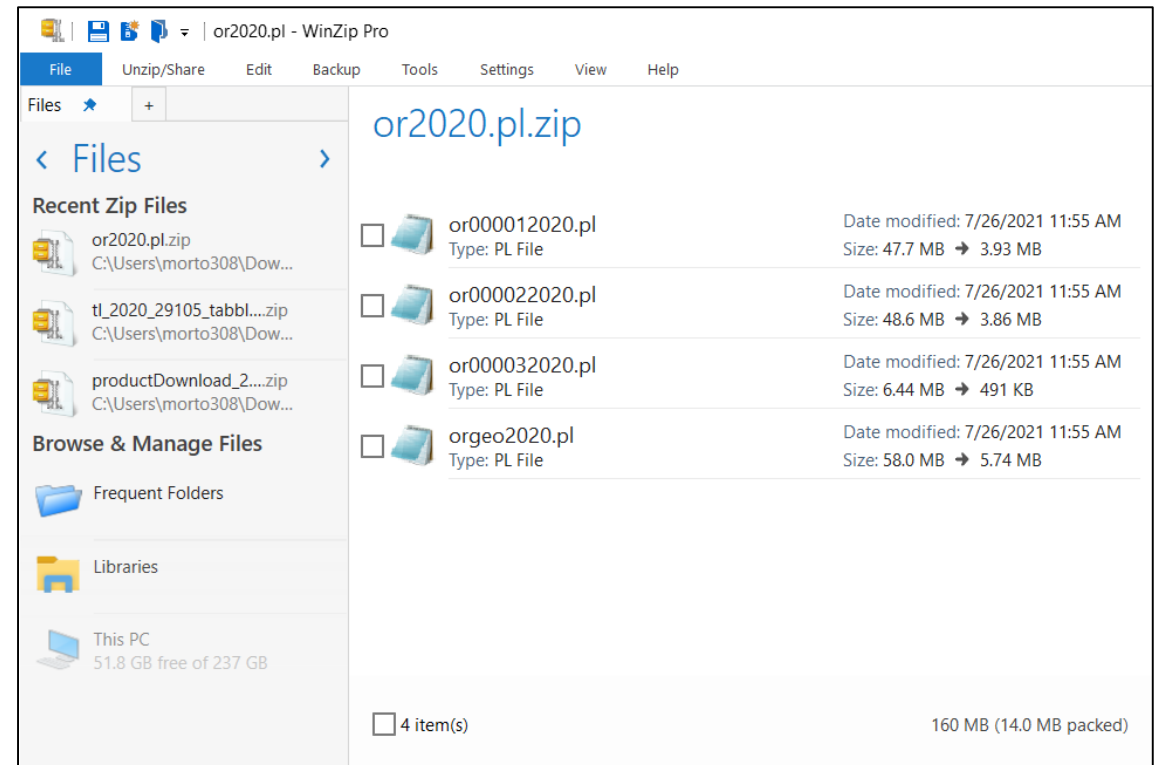
Public Law 94-171 Legacy Format Summary Files

2020 Formatting

- Four relational files per state in single .ZIP file
 - Geoheader
 - Data Segment 01 (P1 & P2)
 - Data Segment 02 (P3, P4 & H1)
 - Data Segment 03 (P5)
- All files stored as pipe-delimited text files
- The geoheader must be used together with the data segments in order to access the data

2010 Formatting (differences)

- 3 files in total: 1 Geoheader and 2 Data Segments
- Geoheader was a fixed width format and Data segments were comma delimited



Redistricting Data Program

P.L. 94-171 Redistricting Data - Disclosure Avoidance

Modernized Disclosure Avoidance: TopDown Algorithm

The 2020 Census reports exact counts for:

- The total population at the state level
- The number and type of occupied group quarters facilities at the block level
- The number of housing units, whether occupied or not, at the block level

When using the 2020 Census Data users should be aware:

- Block-level data are noisy and should be aggregated before use
 - Blocks may look “fuzzy,” meaning that the data for a particular block may not seem correct, but as users combine these “fuzzy” blocks to form more significant geographic units, they will see the data are more accurate.
 - Looking at block-level data, you may notice some implausible results as part of this protection.
- Counts are consistent within tables, across tables, and across geographies
- Data should not be divided across tables
- Data may be subtracted across tables to obtain new counts without a substantial decrease in accuracy

Redistricting Data Program

P.L. 94-171 Redistricting Data Disclosure Avoidance

Modernized Disclosure Avoidance: TopDown Algorithm

Final Redistricting Demonstration Dataset

- Created using 2010 Census Data and the 2020 Census production settings for the TDA
- Published alongside the redistricting data as Privacy Protected Microdata File (PPMF)
- Detailed Summary Metrics
- Processed by IPUMS National Historical Geographic Information System into tables with original published 2010 Census counts and the PPMF counts.
- <https://www.census.gov/programs-surveys/decennial-census/decade/2020/planning-management/process/disclosure-avoidance/2020-das-development.html>