

Welcome to the 23rd NM Data Users Conference

November 29, 2021

Welcome

Agenda – New Mexico Data:

Census Data, Decennial and more

NM 23rd Annual Data Users Conference

(Housekeeping)

Conference Survey

<https://www.surveymonkey.com/r/NMDUC2021>

- Brief 2020 Census First Data Releases for New Mexico
 - (Apportionment & Redistricting)
- Tom Morton, US Census Bureau - Overview of the 2020 Census Redistricting Data



In Memoriam – Jeffrey Mitchell



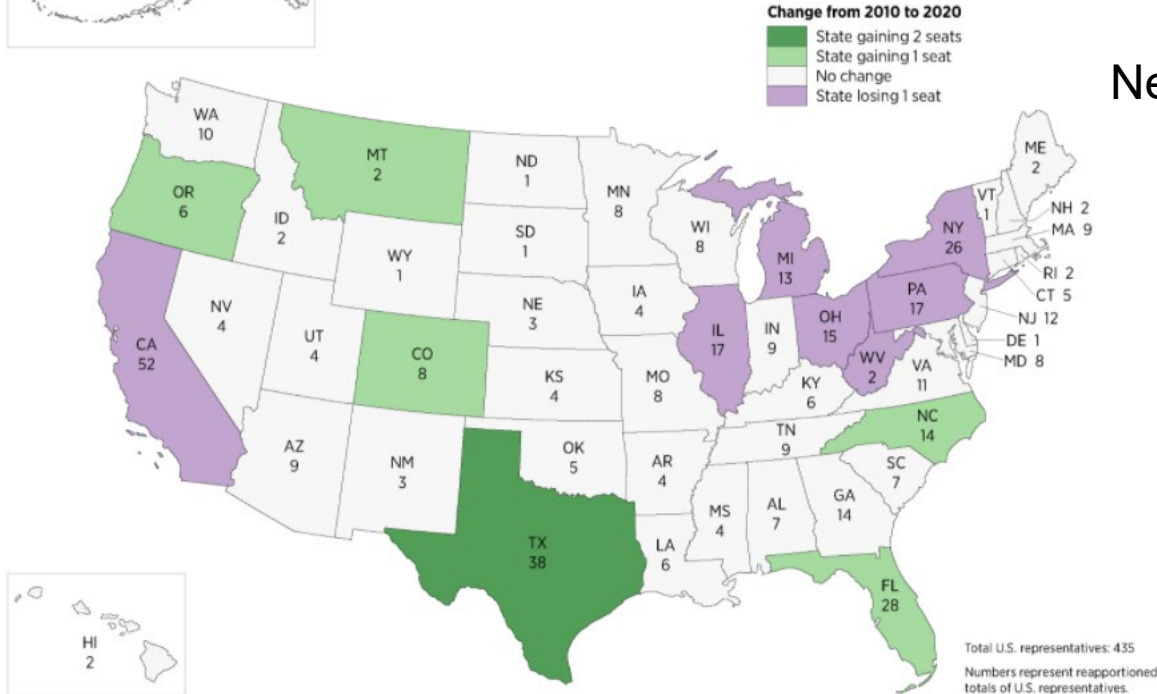
1959 - 2021



2020 Apportionment Results



Apportionment of the U.S. House of Representatives
Based on the 2020 Census



New Mexico Resident Population

April 1, 2020: 2,117,522

April 1, 2010: 2,059,179

Growth 58,343

% change 2010-2020 2.8

% change 2000-2010 13.2

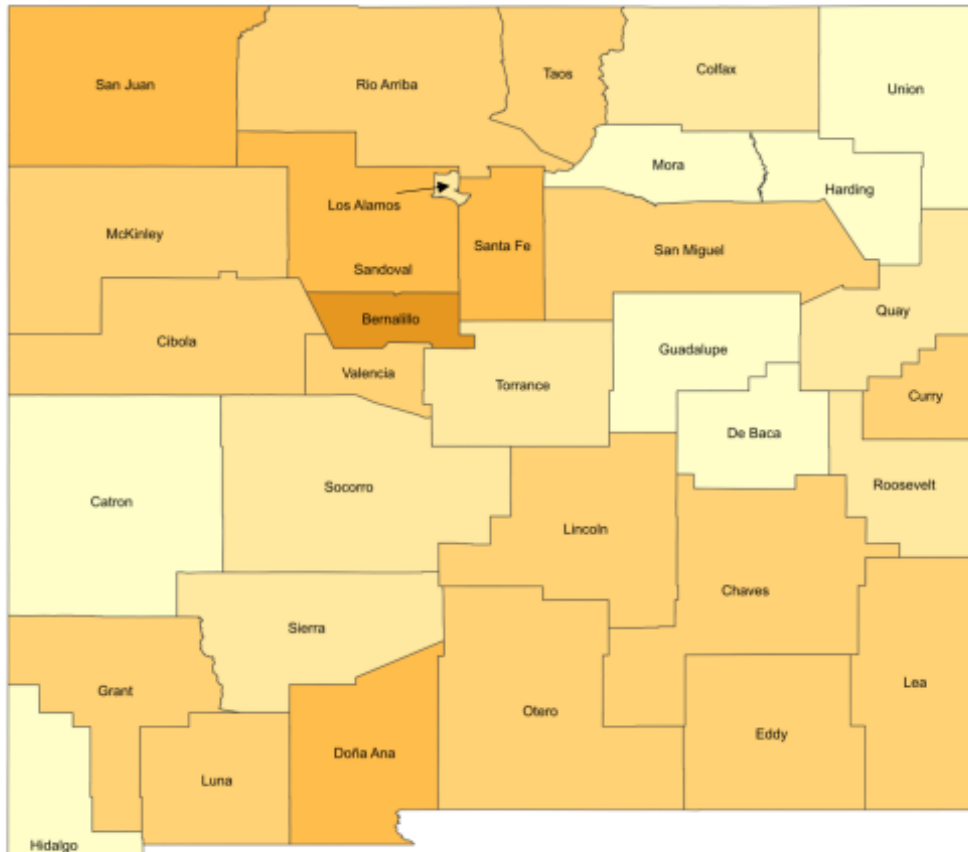
Census Release - <https://www.census.gov/data/tables/2020/dec/2020-apportionment-data.html>



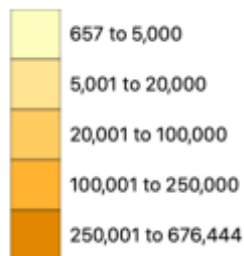
Redistricting Data for NM by County

NEW MEXICO – 2020 Census Results

Total Population by County

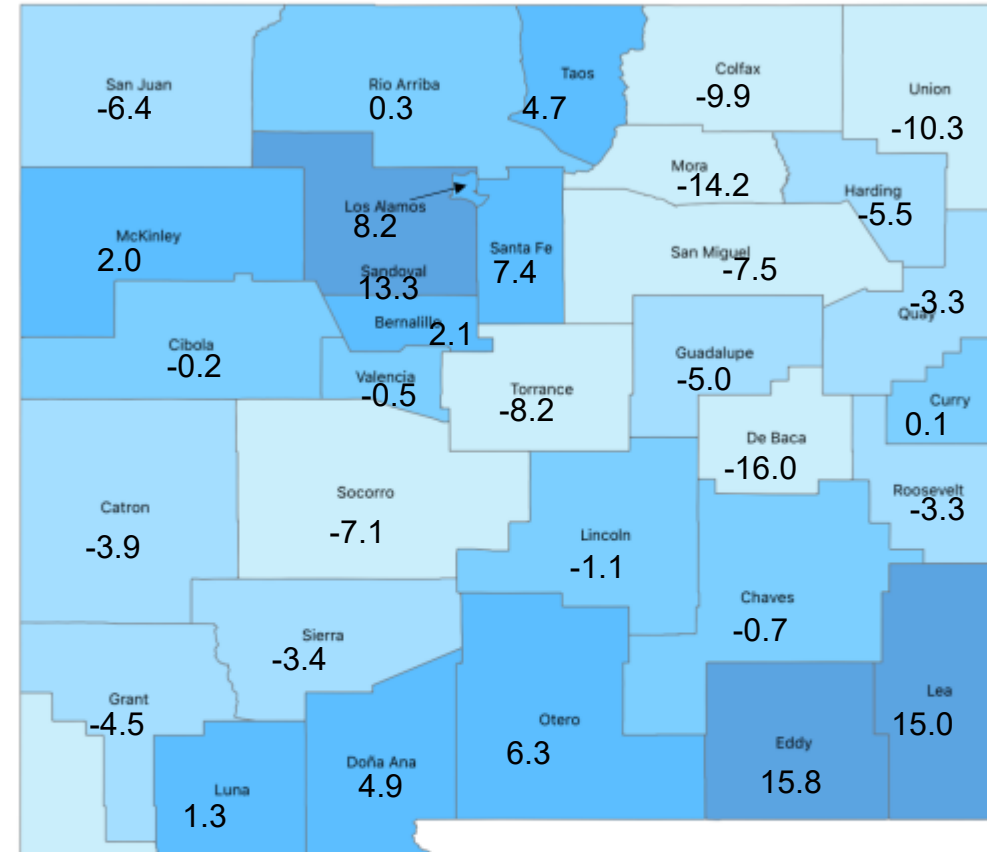


Number of People

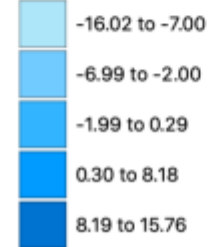


NEW MEXICO – 2020 Census Results

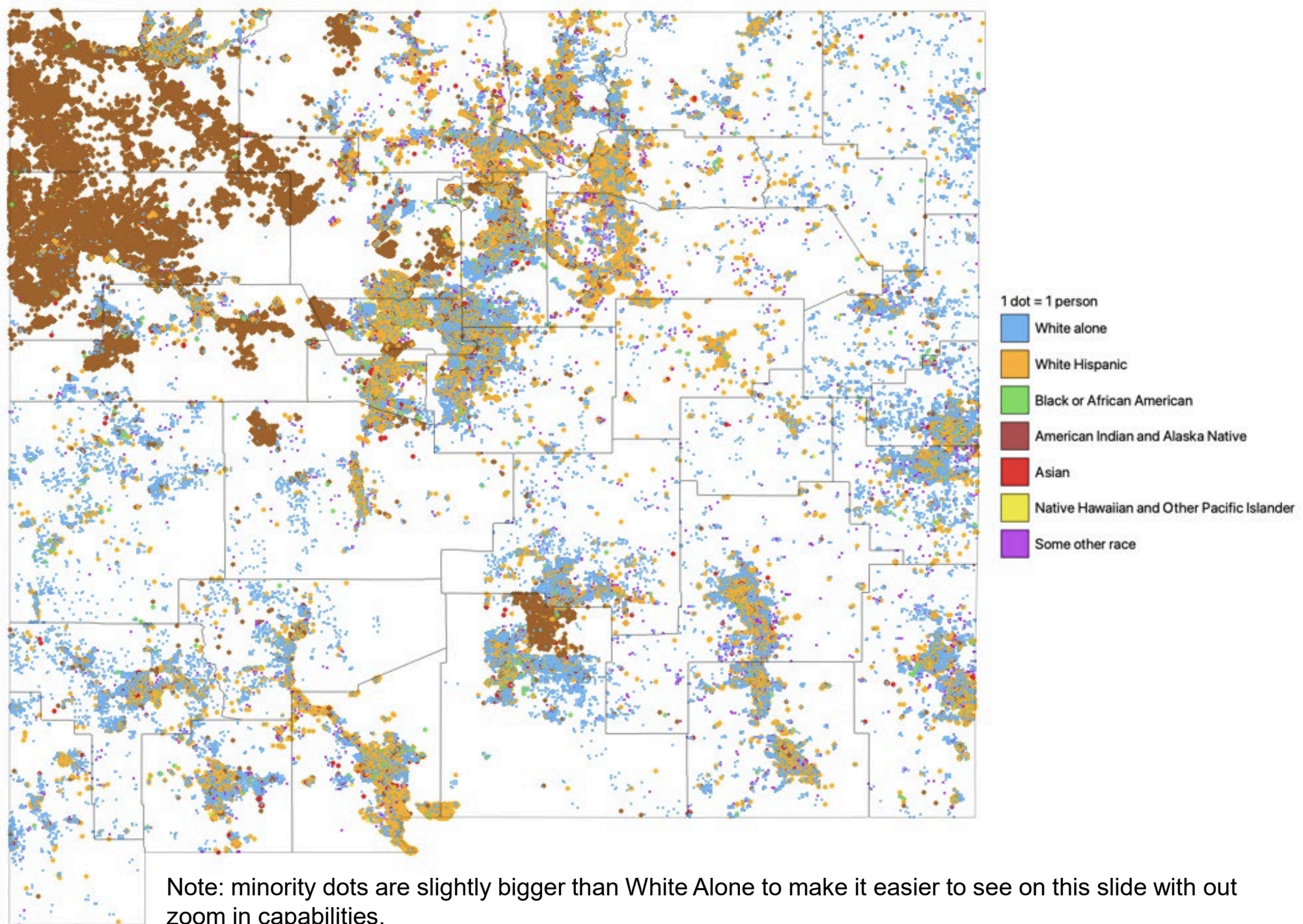
Percent Change in Population by County: 2010 to 2020



Percent Change



New Mexico
2020
Redistricting
County/block
Race/Ethnicity



Tables and other data from BBER

<https://bber.unm.edu/2020-census>

The screenshot shows the BBER website interface. At the top left is the logo for the Bureau of Business & Economic Research (BBER) at the University of New Mexico (UNM). To the right of the logo is a search bar and a navigation menu with links for UNMHOME, BLOG, CONTACT, and SITEMAP. Below this is a secondary navigation menu with links for HOME, DATA, RESEARCH, SUBSCRIBERS, and ABOUT BBER. The main content area is divided into two columns. The left column is titled 'DATA' and lists various categories: NM Statewide, Industry Profiles, Gross Receipts, 2020 Census Tables (highlighted), Historical Demographic Tables and Maps, Census Area Reference Maps, Energy, Counties, Incorporated Places, NM Data Users Conference, Tribal Areas, Colonias, Open Data, RGIS Socioeconomic Data Tool, and Economic Indicators for CoronaVirus. The right column is titled '2020 Census Tables' and 'Summary Tables'. Under 'Total Population:', there is a list of five links: 'U.S. and All States Apportionment Population, 1910 to 2020, excel', 'NM County Total Population, 1900 to 2020, excel', 'NM Incorporated City Total Population, 1900 to 2020, excel', 'NM Census Designated Places Total Population, 2010-2020, excel', and 'NM Tribal Area Total Population, 2010-2020, excel'. Under 'Maps:', there is a list of six links: 'NM 2020 Population by County, pdf', 'NM 2010-2020 Population Change by County, pdf', 'NM 2020 Population by Census Designated Places, pdf', 'NM 2010-2020 Population Change by Census Designated Places, pdf', 'NM 2020 Population by Incorporated Cities, pdf', and 'NM 2010-2020 Population Change by Incorporated Cities, pdf'. In the bottom right corner, there is a circular logo with the text 'We Are Here!' and a speech bubble icon.

NM BUREAU OF BUSINESS & ECONOMIC RESEARCH

SEARCH UNMHOME BLOG CONTACT SITEMAP

HOME DATA RESEARCH SUBSCRIBERS ABOUT BBER

DATA

- NM Statewide
 - Industry Profiles
 - Gross Receipts
 - 2020 Census Tables**
 - Historical Demographic Tables and Maps
 - Census Area Reference Maps
 - Energy
- Counties
- Incorporated Places
- NM Data Users Conference
- Tribal Areas
- Colonias
- Open Data
- RGIS Socioeconomic Data Tool
- Economic Indicators for CoronaVirus

2020 Census Tables

Summary Tables

Total Population:

- U.S. and All States Apportionment Population, 1910 to 2020, excel
- NM County Total Population, 1900 to 2020, excel
- NM Incorporated City Total Population, 1900 to 2020, excel
- NM Census Designated Places Total Population, 2010-2020, excel
- NM Tribal Area Total Population, 2010-2020, excel

Maps:

- NM 2020 Population by County, pdf
- NM 2010-2020 Population Change by County, pdf
- NM 2020 Population by Census Designated Places, pdf
- NM 2010-2020 Population Change by Census Designated Places, pdf
- NM 2020 Population by Incorporated Cities, pdf
- NM 2010-2020 Population Change by Incorporated Cities, pdf

We Are Here!



Ever Green Partnerships

Census Bureau

Data Dissemination Specialists
(DDS)
Census Partnership
Specialists

Governors Liaisons
(GL)

Federal State
Cooperative for
Population Estimates
(FSCPE)

Census Information
Centers
(CIC)

State Data Center
Program (SDC)

These partners
should maintain
good
communication

There are different
roles for different
partners.

WE don't have to
do it all.



Thank You!

Next Session - **The New Mexico Economy: Recent History and Outlook**

Michael O'Donnell, *Acting Director, UNM Bureau of Business and Economic Research*

The session will start at **1:00 pm** with the same login as this morning.

Presentations will be loaded post conference to:

<https://bber.unm.edu/23rd-annual-nm-data-users-conference-2021>

Tell us how we are doing:

[Conference Survey - https://www.surveymonkey.com/r/NMDUC2021](https://www.surveymonkey.com/r/NMDUC2021)

