

Tribal Census 101

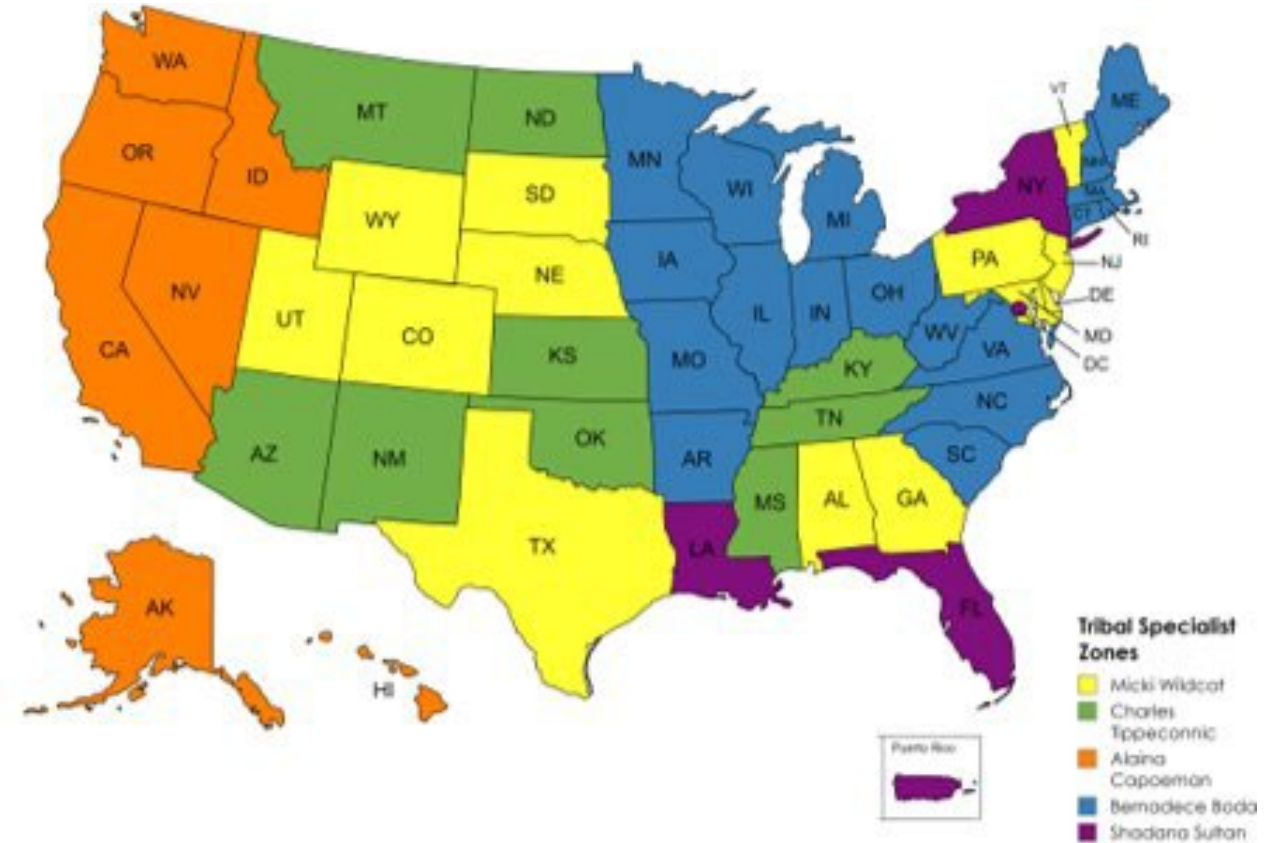
2024

Charles Tippeconnic
Tribal Relations Specialist
U.S. Census Bureau



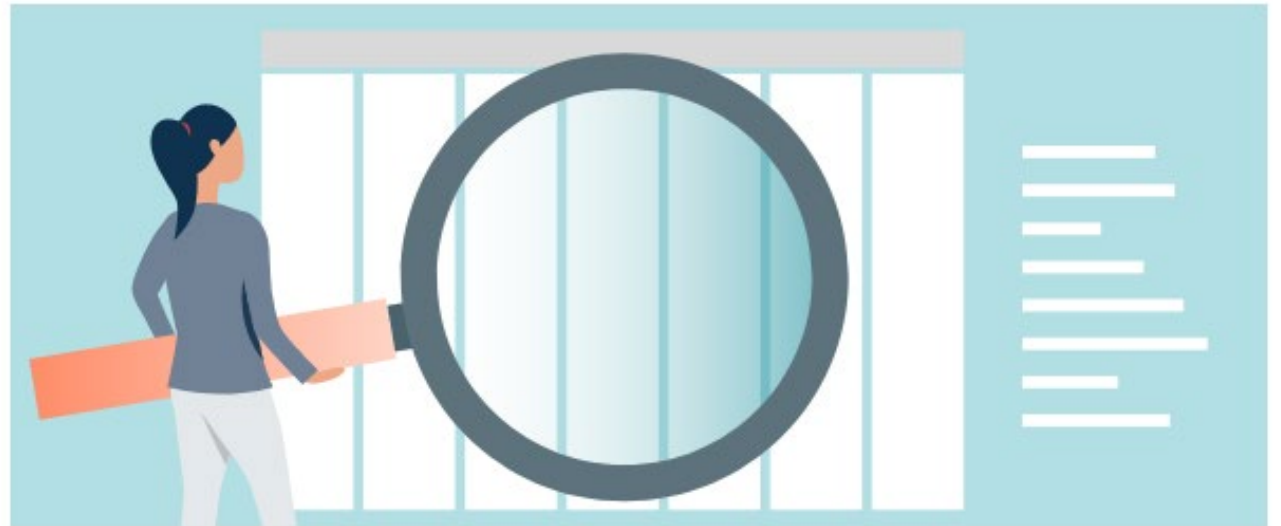
Tribal Relations Overview

- Tribal Data Tabulation
- Engage Partners
- Updates and resources for ongoing surveys
- Surveys & Upcoming 2030 Census
- Geographic Programs
- Cultural Awareness and Engagement
- Field and other Directorates



Overview

- Tribal Data Tabulation
- Tribal Geography
- Surveys
- Tools
- Q&A



Why Census Data?



...In addition to its use in fair voting representation, census data play a key role in the fair distribution of billions of dollars to tribes and AI/AN people across the nation. Federal funding for Indian schools, Indian education programs, Indian health programs, Indian housing programs, water and sewage projects, roads, and economic development are distributed based on data collected by the Census Bureau....

National Congress of American Indians website

<https://www.ncai.org/policy-issues/economic-development-commerce/census>



Tribal Data Tabulation

- Geography
 - Where people live, not Enrollment.
 - Tribal Land and Urban counts
- Race/Ethnicity
 - Self-identification
 - AIAN Category



Tribal Admin Records Project

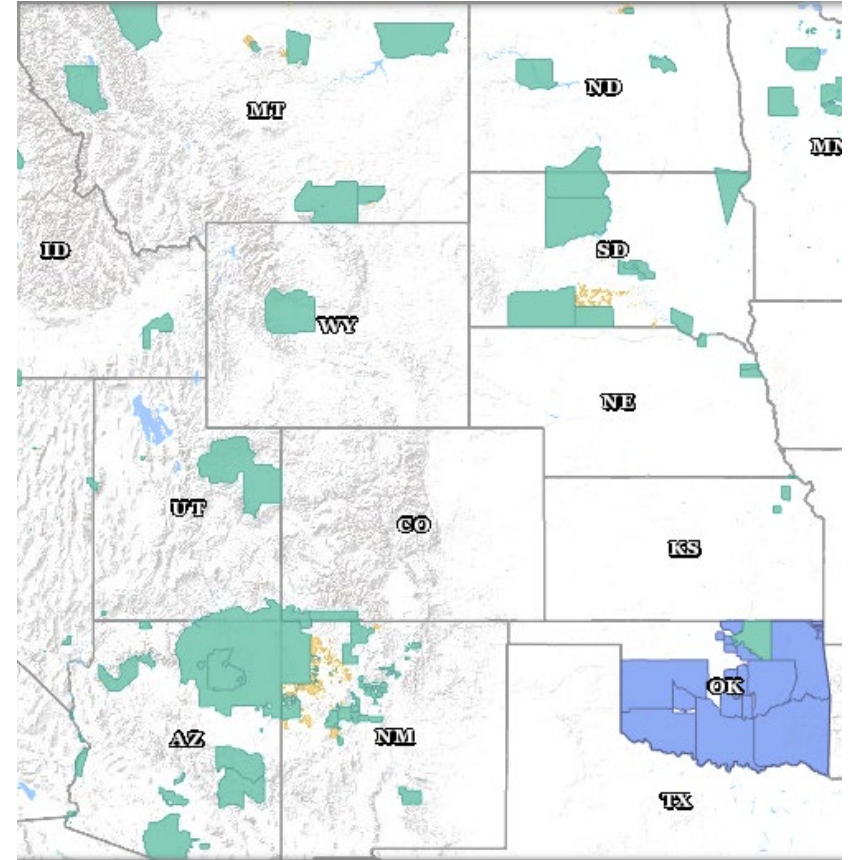
The Census Bureau Would Like to explore data (admin) records that Tribal Nations may provide to close gaps or improve data coverage for their Tribal Nation. The data is intended for use with 2030 Census planning, not ongoing surveys. Currently, we use administrative Records from agencies like IRS, IHS, etc.



The Tribal Nation does not have to create a special data set; just supply what's already available. Is there a certain time of year when the records are most up to date? The US Census Bureau thanks you in advance for consideration of this valuable partnership

Tribal Geography: AIAN Areas

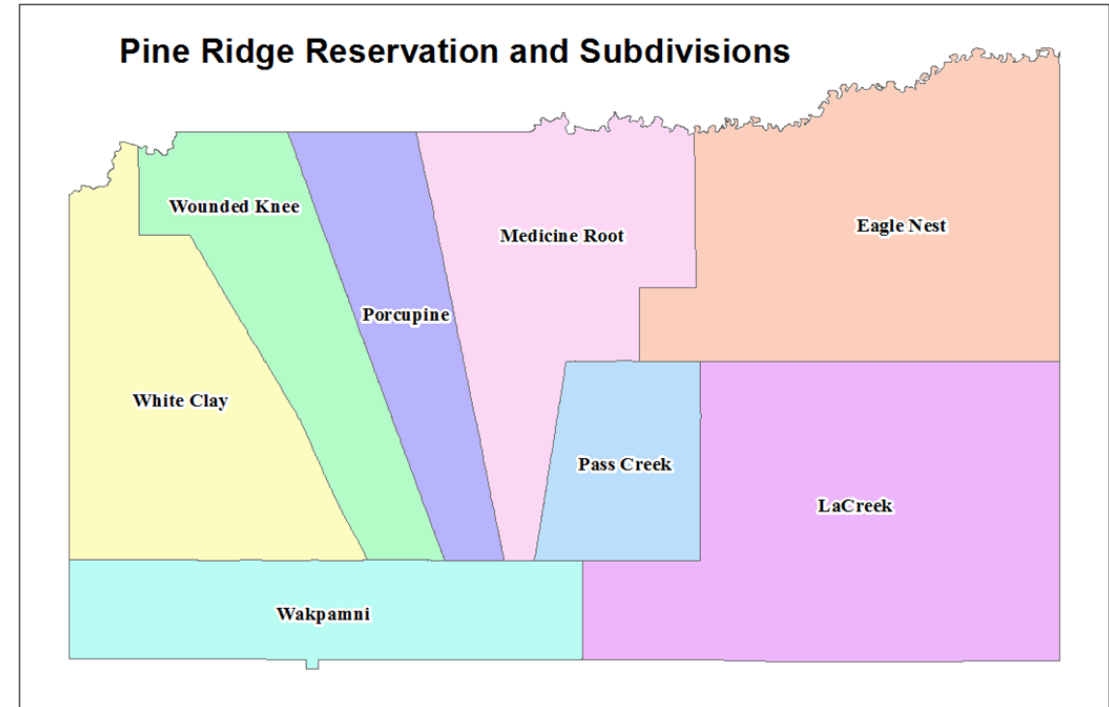
- Reservations (AIR's)
- Trust Lands
- Oklahoma Tribal Statistical Areas (OTSA's)
- Tribal Subdivisions
- Census Designated Places (CDP's)
- Tribal Designated Statistical Areas



<https://www2.census.gov/geo/pdfs/reference/geodiagram.pdf>

Tribal Geography Resources

- Localized data
 - Tribal Subdivisions
 - CDP
- BAS / LUCA
- ESRI GIS
- BIA Training
- Geography Ambassador
- [Tigerweb](#)



Ongoing Surveys

- 130+ Surveys each year
- Decennial
 - Post Enumeration Survey (PES) – Oct 2021
 - Access/permissions
- American Community Survey (ACS)
- Household Pulse Survey
- Current Population Survey
- Economic Survey (Business Focus)

Census is Hiring!! New Online Application process!

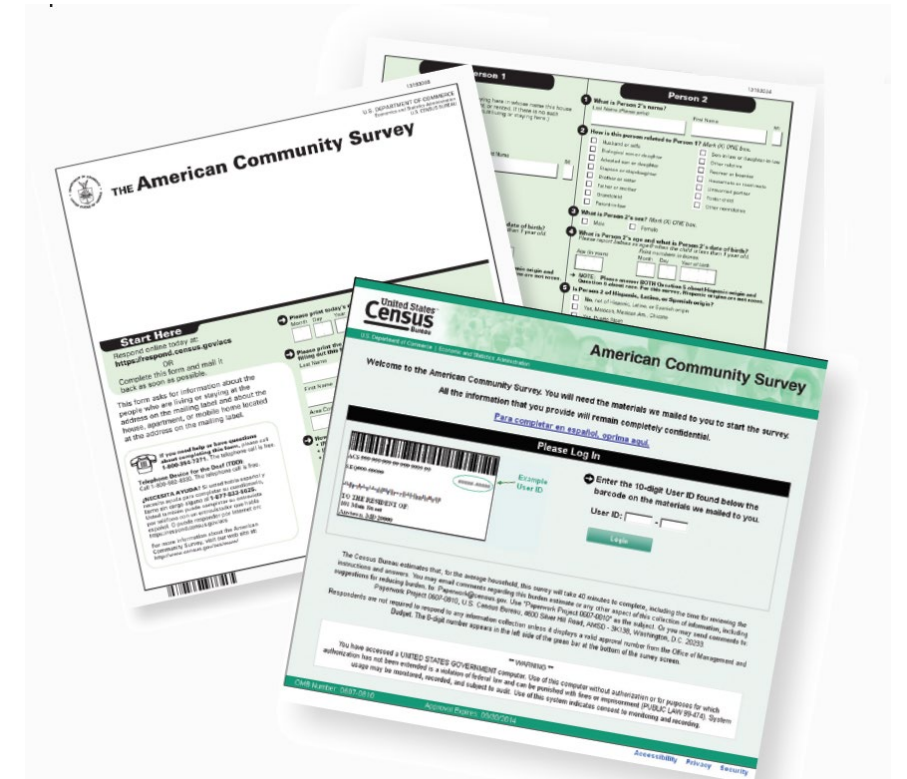
<https://www.census.gov/about/census-careers.html>



<https://www.census.gov/programs-surveys/surveys-programs.html>

American Community Survey (ACS) Features

- 3.5 million addresses
- \$675 billion Federal Spending
- 40 topics
- 300+ evidence-based Federal government uses
- 11 billion estimates each year
- Three key annual data releases:
 - 1-year Estimates (65K+ Population)
 - 1-year Supplemental Estimates (20K+ Population)
 - 5-year Estimates (all areas)



Margin of Error

- Precision at a given level of confidence.
- 90% confidence level.
- High margins of error



2020 Census Detailed Demographic and Housing Characteristics File A (Detailed DHC-A)

- 1,500 detailed racial and ethnic groups
 - Tribal Groupings vs Tribal Affiliation
- Amount of data available depends on population size within a specific geography
 - As much detail as possible while ensuring strong confidentiality protections.
- Mapping capabilities with heat sensor



<https://data.census.gov/table/DECENNIALDDHCA2020.T01001?t=-5000M&y=2020&d=DEC+Detailed+Demographic+and+Housing+Characteristics+File+A&tp=true>

Online Census Data Tools for Indian Country



My Tribal Area

The screenshot shows the 'My Tribal Area' website interface. At the top, there are navigation tabs for 'People', 'Jobs', 'Housing', 'Economy', and 'Education'. Below these, a search bar is present with 'OR' entered. A dropdown menu shows 'North Dakota' and 'Turtle Mountain Reservation and Off-Reservation Trust Land, MT-ND-SD'. A map of North Dakota highlights the reservation area. A table displays demographic and economic statistics for the reservation, including total population, sex distribution, and age groups.

Sex and Age	ACS Margin Estimate of Error
Total population	9,008 (+/- 207)
Male	4,497 (+/- 147)
Female	4,509 (+/- 151)
Under 5 years	891 (+/- 83)
5 to 9 years	1,160 (+/- 148)
10 to 14 years	823 (+/- 132)
15 to 19 years	791 (+/- 72)
20 to 24 years	671 (+/- 74)
25 to 34 years	1,153 (+/- 71)
35 to 44 years	955 (+/- 88)
45 to 54 years	1,134 (+/- 89)
55 to 59 years	510 (+/- 82)
60 to 64 years	367 (+/- 57)
65 to 74 years	326 (+/- 68)

U.S. Department of Commerce
Economic and Statistics Administration
1155 Constitution Ave
census.gov

POWERED BY
The American Community Survey

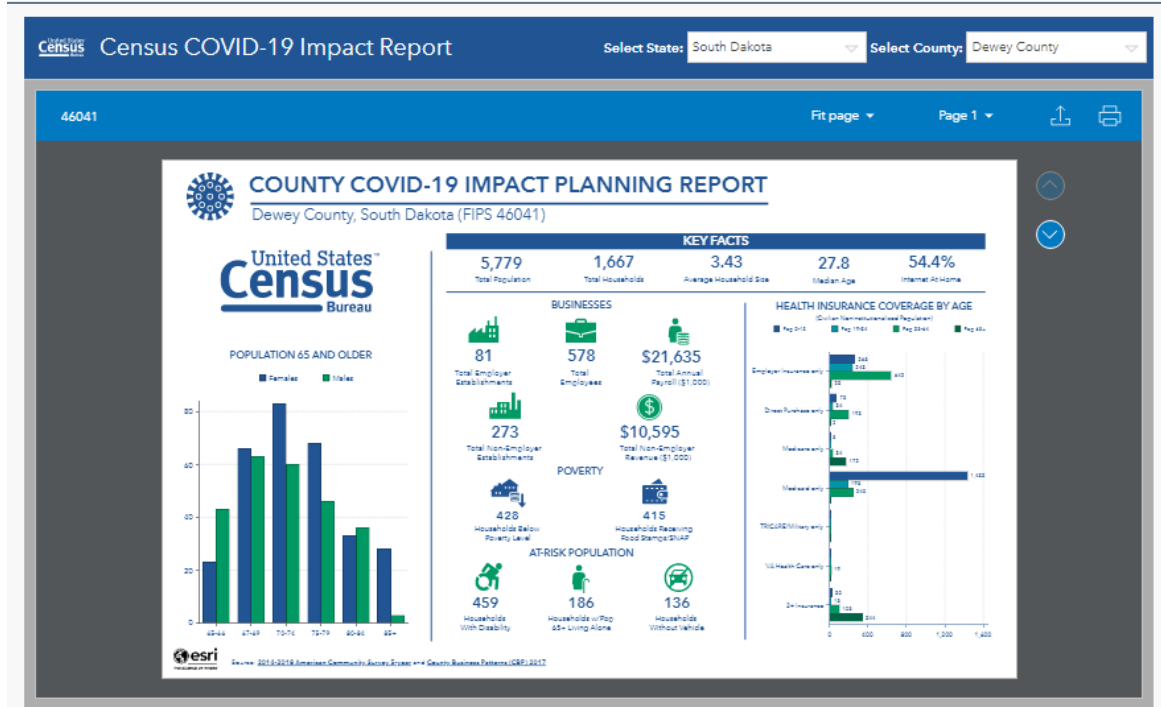
Glossary >

- Features statistics for each of the nation's tribal areas.
- Allows easy access to selected demographic and economic statistics.
- Provides maps and downloadable statistics.

- Demographic, social, economic, and housing Stats (ACS)
- AIAN Lands (not Urban)
- Community Planners
- Grant Writers
- Tribal Officers/Directors
- Partners to Tribal Nations



Pulse Survey CoVid19 Impact Report



- Business and Household
- Covid 19 Risk Factors
- Health Directors/Officers
- Tribal Clinics
- Tribal Leaders
- Community Planners



Census Business Builder

Thinking about opening your own business?
CBB can help find underserved markets

Did you know:
There are 17,394 houses per Real Estate Office in St. Lawrence County, New York (National average: 1,377)

Source: ACS and CBT

[Try It Now](#)

CENSUS business builder
Small Business Edition

United States Census Bureau

Census Business Builder: Small Business Edition - 3.2.0

Determine the Best Location for Your Business

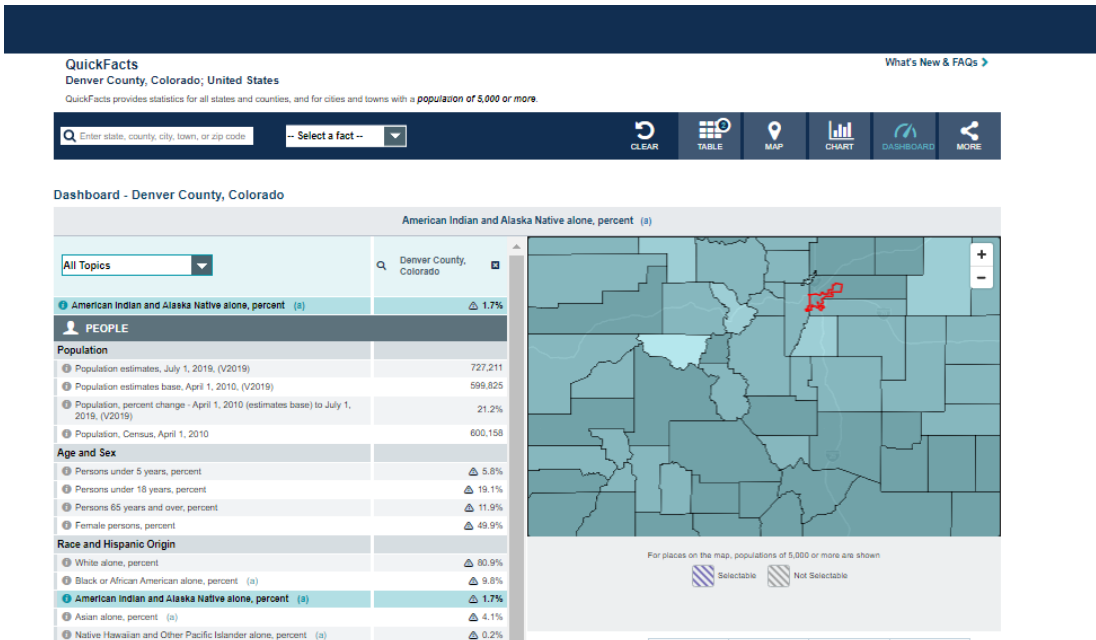
1. What type of business do you want to research?
Select the type of business you want to research by either selecting it first from the "Most Popular" categories below (and the detailed list provided) or by using the Type of Business Search. (You must choose one type of business.)

- Construction
- Food Services
- Healthcare
- Personal Services
- Prof & Biz Services
- Retail

- Data to help start or grow a business
- Data to understand the business landscape for a region
- [Video Overview](#)
- Economic Development
- Chamber of Commerce
- TERO Offices
- Economic Surveys helps populates this data



Quickfacts



- Tables, maps, and charts
- States, Counties, Cities & Towns (5K+ Pop)
- Community Planners
- Grant Writers/Nonprofits
- Urban Tribal Partners
- Tribal Enterprises



Narrative Profile

American Community Survey

Data Profiles

Narrative Profiles

Geographic
Comparison Tables

Subject Tables

Ranking Tables

Supplemental
Tables

Data.census.gov

More ACS Tools &
Apps

< **Back to Data
Tables & Tools**

Narrative Profiles

Narrative Profiles are short, analytic reports derived from the ACS 5-year estimates. Each Narrative Profile covers 15 different topic areas and provides text and bar charts to display highlights of selected social, economic, housing and demographic estimates for a selected geographic area.

2019 2018 2017 2016 2015 2014

2019

2015–2019 ACS 5-Year Narrative Profile

Select a Geography Type

- Nation
- State
- County
- Place
- Census Tract
- ZIP Code Tabulation Area
- Metropolitan/Micropolitan Statistical Area
- American Indian Area/Alaska Native Area/Hawaiian Home Land**

Choose a AIAN ▼



<https://www.census.gov/acs/www/data/data-tables-and-tools/>

Cleared for Public Release

Statistics in Schools

United States
Census
Bureau

Search

ACTIVITIES RESOURCES STANDARDS ABOUT

Parents, caregivers and teachers: Explore this page for at-home or distance learning activities.

// Census.gov > Our Surveys & Programs > Statistics in Schools > SIS Resources > Fun Facts

Fun Facts

Fun Facts: The 2020 Holiday Season
Holiday Season Fun Facts

Fun Facts: American Indian & Alaska Native Heritage Month
American Indian & Alaska Native Heritage Month Fun Facts

Fun Facts: Thanksgiving Day
Thanksgiving Day Fun Facts

Fun Facts: Halloween - October 31
Halloween Fun Facts

Fun Facts: Constitution Day - September 17

Fun Facts: Back to School

Fun Facts: Fourth of July

Fun Facts: Father's Day - June 21

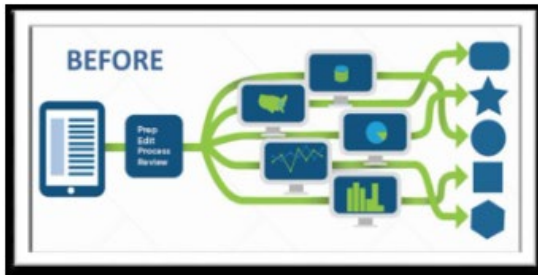
- Activities and materials
- Reusable, yearly
- Educators
- Directors of Education
- After school programs



Explore Census Data

The Census Bureau is the leading source of quality data about the nation's people and economy.

[Advanced Search](#) [Help](#) [Feedback](#)



- Centralized data hub
- Tribal Leaders/Officers
- Community Planners
- Grant Writers
- Anyone needing data

Tribal Overview 2020 Census

Race and Ethnicity in the United States: 2010 Census and 2020 Census

Pick a topic. [Race by Ethnicity](#) [Hispanic Origin](#)

Select a question:

What percentage was each group in 2020?

How has each group changed since 2010?

What are facts for my state or county?

Change the group and geography filters. Then click the arrow to change the tables.

Group: American Indian and Alaska Native alone or in combination Total Population State and County: Mississippi Neshoba County

United States		Mississippi		Neshoba County, Mississippi	
Population		Population		Population	
2020 total population	331,449,281	2020 total population	2,961,279	2020 total population	29,087
2010 total population	308,745,538	2010 total population	2,967,297	2010 total population	29,676
American Indian and Alaska Native Alone or in Combination		American Indian and Alaska Native Alone or in Combination		American Indian and Alaska Native Alone or in Combination	
Population change	4,445,479	Population change	27,819	Population change	375
Percent change	85.2%	Percent change	107.4%	Percent change	7.4%
2020 population	9,666,058	2020 population	53,729	2020 population	5,442
2020 percent*	2.9%	2020 percent*	1.8%	2020 percent*	18.7%
2010 population	5,220,579	2010 population	25,910	2010 population	5,067
2010 percent*	1.7%	2010 percent*	0.9%	2010 percent*	17.1%
Percent American Indian and Alaska Native Alone or in Combination Rank (scroll)		Percent American Indian and Alaska Native Alone or in Combination Rank (scroll)		Percent American Indian and Alaska Native Alone or in Combination—Rank Within United States	
1	Kusilvak Census Area, Alaska 95.9%	1	Neshoba County, Mississippi 18.7%	105 out of 3,143	
2	Oglala Lakota County, South Da.. 95.6%	2	Leake County, Mississippi 7.6%	1 out of 82	
3	Todd County, South Dakota 91.3%	3	Newton County, Mississippi 6.5%		
4	Sioux County, North Dakota 89.4%	4	Kemper County, Mississippi 6.0%		
5	Bethel Census Area, Alaska 88.5%	5	Hancock County, Mississippi 2.9%		
6	Northwest Arctic Borough, Alas.. 88.1%	6	Pearl River County, Mississippi 2.8%		
Percent Change American Indian and Alaska Native Alone or in Combination Rank (scroll)		Percent Change American Indian and Alaska Native Alone or in Combination Rank (scroll)		Percent Change American Indian and Alaska Native Alone or in Combination—Rank Within United States	
1	Thomas County, Nebraska 1,400.0%	1	Tishomingo County, Mississippi 306.7%	3,035 out of 3,136*	
2	Gove County, Kansas 1,116.7%	2	Madison County, Mississippi 269.9%	79 out of 82*	
3	Petroleum County, Montana 1,100.0%	3	Rankin County, Mississippi 268.3%		
4	Hayes County, Nebraska 850.0%	4	Lamar County, Mississippi 267.9%		
5	Sherman County, Nebraska 700.0%	5	Webster County, Mississippi 254.2%		

If data are missing, hover over the table to learn why.



Note: U.S. totals and county rank within the United States do not include Puerto Rico. Ranking based on unrounded numbers. Percentages may not add to 100 due to rounding. Source: 2010 Census Redistricting Data (Public Law 94-171) Summary File; 2020 Census Redistricting Data (Public Law 94-171) Summary File. Additional information is available for: [Race](#), [Ethnicity](#), [Race and Ethnicity Data in the 2020 Census](#)

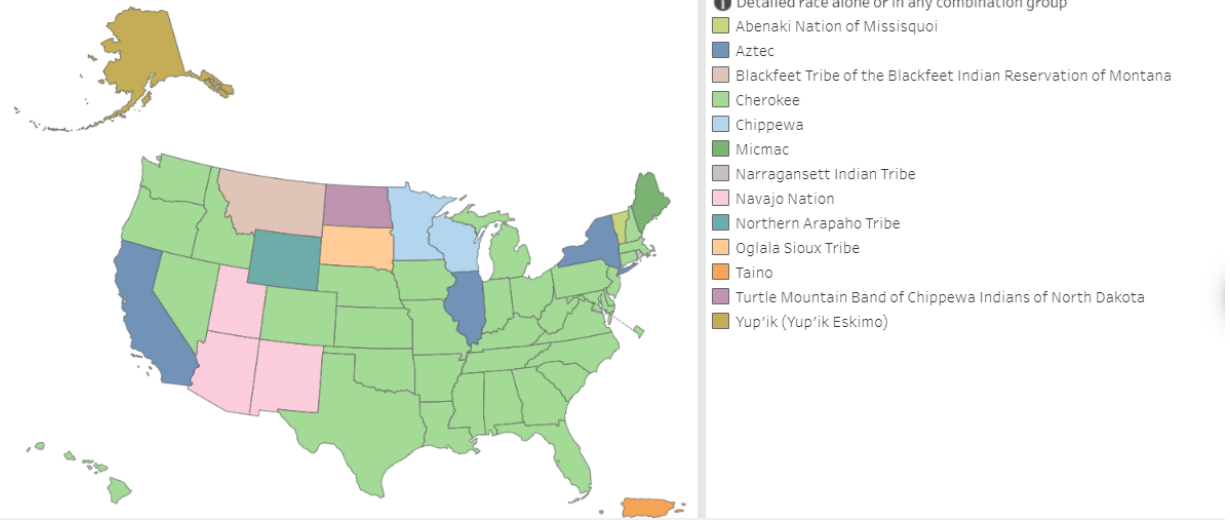
Detailed Races and Ethnicities in the United States and Puerto Rico: 2020 Census

Maps

Rankings

Select a racial or ethnic group: American Indian and Alaska Native alone or in any combination Select a map: Largest detailed group Highlight state or equivalent: Highlight State Select a geography level: States Counties

Largest Detailed American Indian and Alaska Native Alone or in Any Combination Group by State



*click graphics to route to links

Tribal Overview 2020 Census

DDS

1-844-ASK-DATA or census.askdata@census.gov

We want your feedback! Is there anything you'd like to see from Census?

