

# Discovering Trends Using the Longitudinal Employer- Household Dynamics Data products

**November 16, 2022**

Presented by: **Earlene Dowell**

US Census Bureau

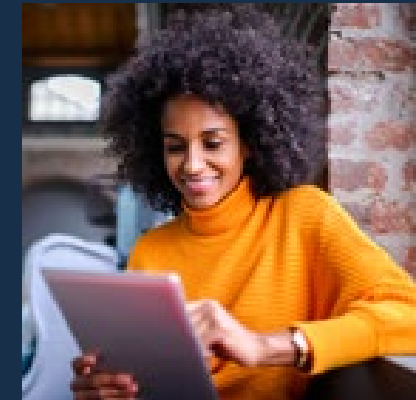


# Outline

- i. Longitudinal Employer-Household Dynamics Program (LEHD)
- i. LEHD Data Products

[census.gov](https://www.census.gov)

- To obtain an archived copy, visit [census.gov](https://www.census.gov) / Explore Data / Census Academy / Webinars / Webinar Series
- Find stories and free visualizations under 'Library'



# Longitudinal Employer- Household Dynamics Program



Data Product	Explore the data, answer questions, or get visualizations	Bulk data for use in analysis process/software	Live queries for building web applications
Quarterly Workforce Indicators (QWI)	<a href="#">QWI Explorer</a>	<a href="#">LED Extraction Tool</a> <a href="#">Raw data download</a>	<a href="#">Census Bureau API</a>
LEHD Origin-Destination Employment Statistics (LODES)	<a href="#">OnTheMap</a> <a href="#">OnTheMap for Emergency Management</a>	<a href="#">Raw data download</a> LED Extraction Tool – Coming in 2023	Future development
Job-to-Job (J2J)	<a href="#">Job-to-Job Explorer</a>	<a href="#">Raw data download</a> LED Extraction Tool – Coming in 2022	Future Development
Post-Secondary Employment Outcomes (PSEO)	<a href="#">PSEO Explorer</a>	<a href="#">Raw data download</a>	<a href="#">Census Bureau API</a>
Veteran Employment Outcomes (VEO)	<a href="#">VEO Explorer</a>	<a href="#">Raw data download</a>	Future Development

# America Counts Stories Behind the Numbers

## Youngest and Oldest Workers Drove Job Recovery After Hurricane Maria



English

// [Census.gov](#) / [America Counts: Stories Behind the Numbers](#) / [Youngest and Oldest Workers Drove Job Recovery After Hurricane Maria](#)

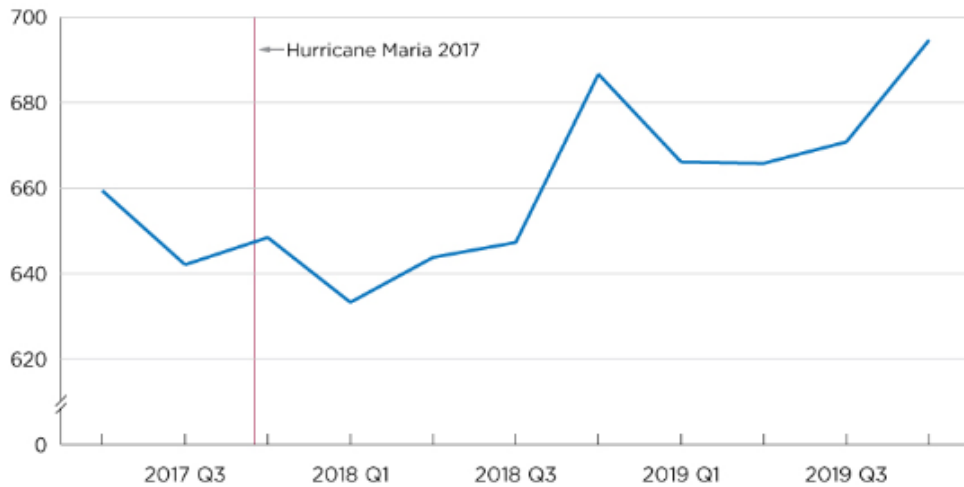
## First Quarterly Workforce Indicators for Puerto Rico Provide Demographic Portrait of Island's Employment Trends

# Workforce Post Hurricane Maria

This research looks at the recovery through 2019, before the COVID-19 pandemic affected employment across the nation.

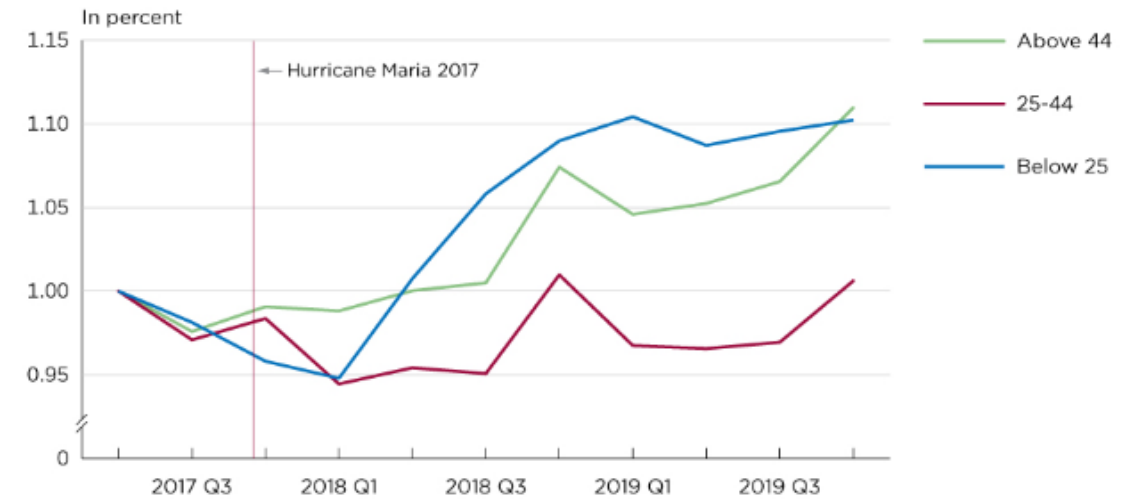
By the end of 2019, employment for workers ages 24 and younger, and those ages 45 and up, more than recovered from pre-Maria levels, increasing 10% (Figure 2).

Figure 1.  
**Puerto Rico Employment Post-Hurricane Maria**  
(In thousands)



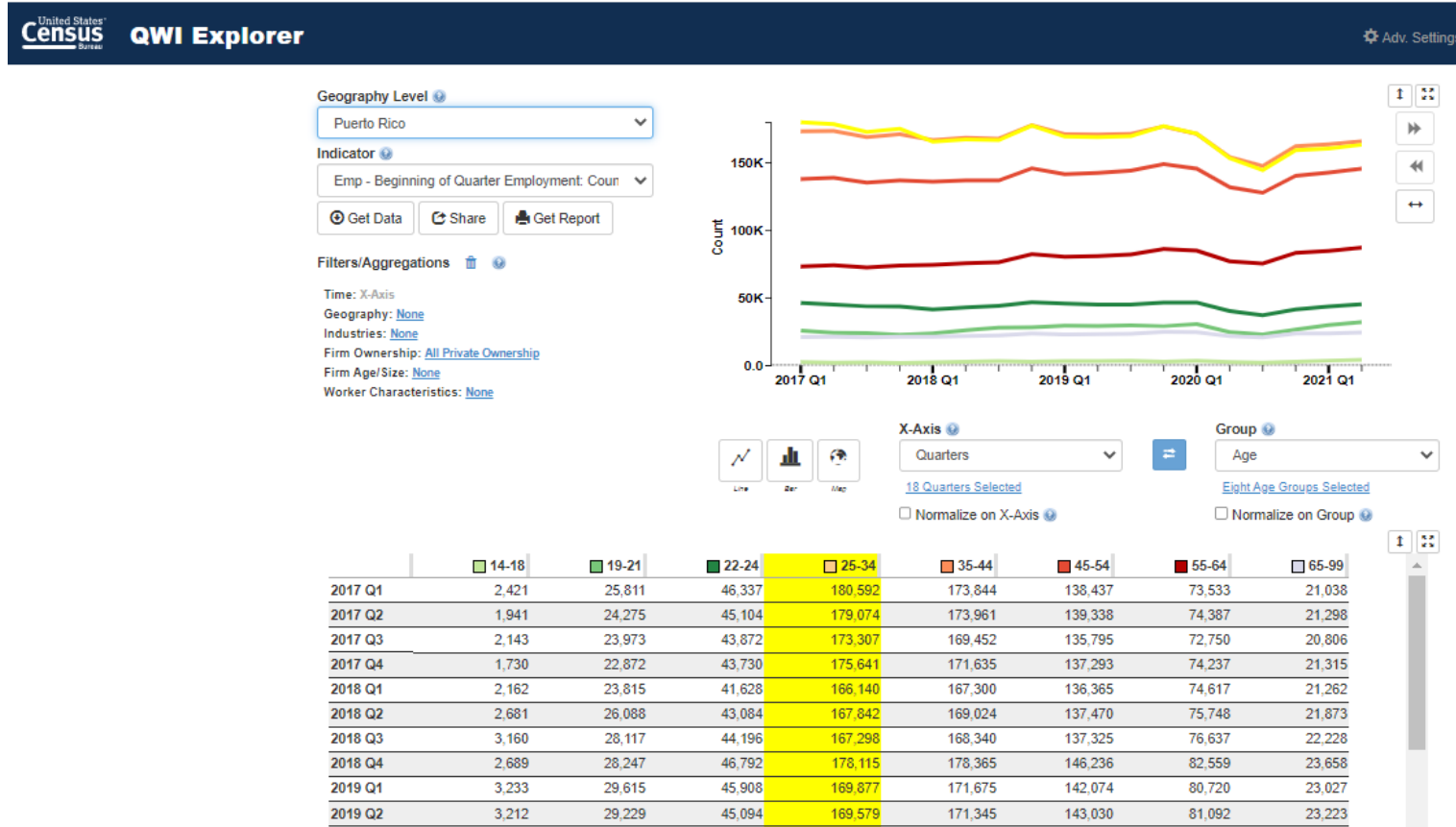
Source: U.S. Census Bureau, Quarterly Workforce Indicators R2022Q3, Beginning of Quarter Employment (Not seasonally adjusted).

Figure 2.  
**Puerto Rico Employment by Age**  
(Indexed to Pre-Hurricane Maria employment)



Source: U.S. Census Bureau, Quarterly Workforce Indicators R2022Q3, Beginning of Quarter Employment (Not seasonally adjusted).

# QWI Explorer



# Manufacturing Opens More Doors to Women

**More Women in  
Manufacturing Jobs  
in Every Age Group**

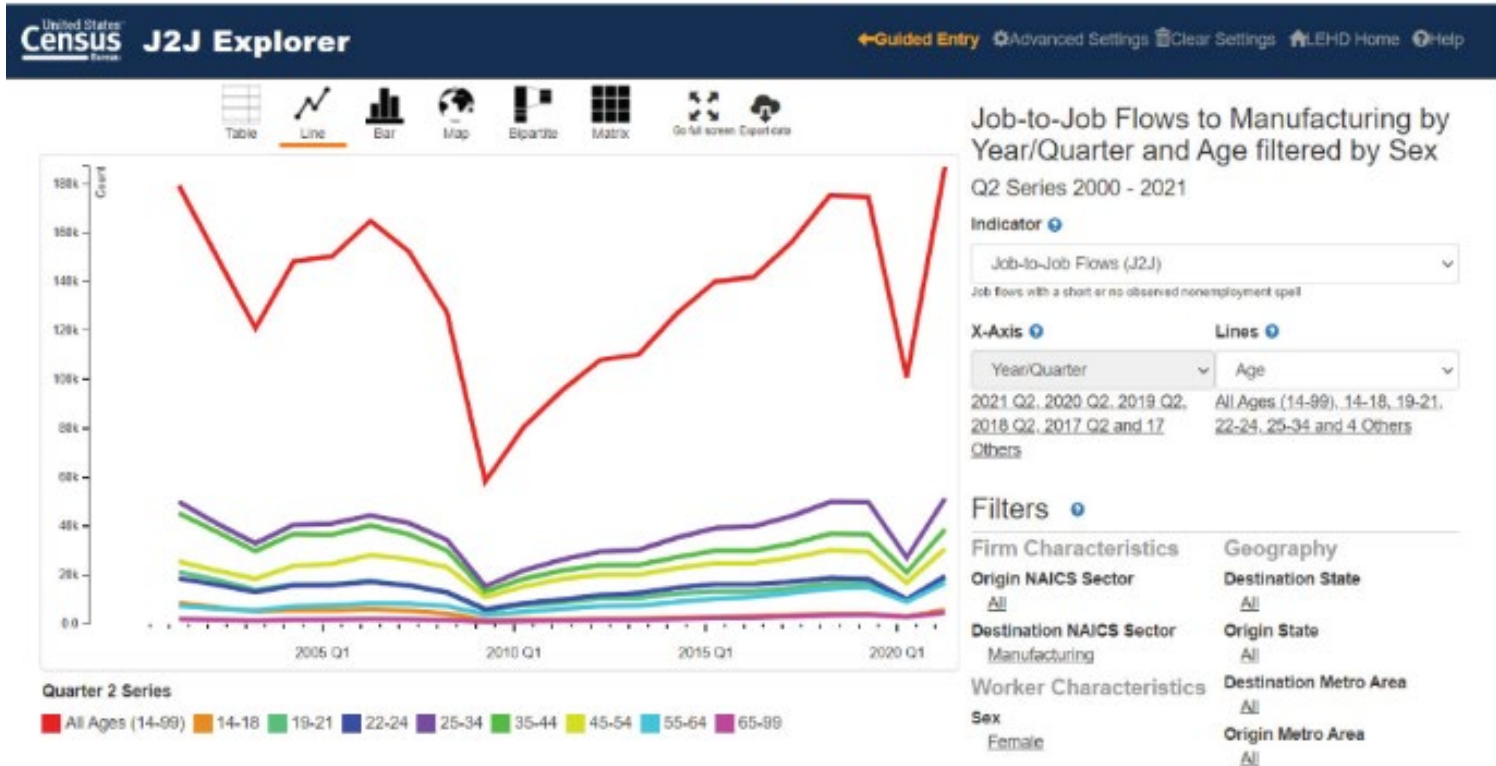


// [Census.gov](https://www.census.gov) / [America Counts: Stories Behind the Numbers](#) / [More Women in Manufacturing Jobs in Every Age Group](#)

## **Manufacturing Opens More Doors to Women**

Using J2J Explorer women in manufacturing by age.

### Job Flows for Women in Manufacturing by Worker Age: 2000-2021



Source: U.S. Census Bureau, Longitudinal Employer-Household Dynamics Job-to-Job Flows Explorer: <<https://j2jexplorer.ces.census.gov/explore.html#1390221>>.



Hurricanes, Floods, Winter Storms



Disaster Areas



Wildfires



Demographic & Economic Data

Hurricane Ida

Event Class Wind History 34kn (Cumulative Swath) Time Mon, 30 Aug 2021 10:55:44 GMT

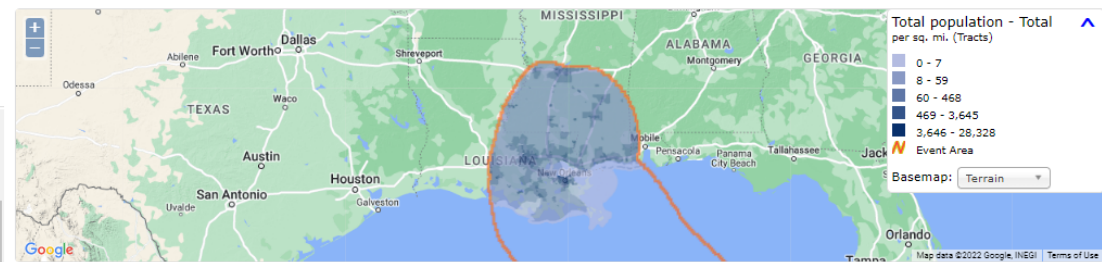
Detail by: Characteristics  
 Topic: 2015-2019 ACS Chara...  
 Analysis Area: Event Area

**Race**

Universe: Total population  
 Source: American Community Survey, 2015-2019, [Source Info](#)

Characteristic	Estimate	Margin of Error
<b>Total</b>	<b>4,576,880</b>	<b>±6,508</b>
White alone	2,784,407	±6,547
Black or African American alone	1,538,260	±5,188
American Indian and Alaska Native alone	21,983	±1,186
Asian alone	82,124	±1,686
Native Hawaiian and Other Pacific Islander alone	1,042	±398
Some other race alone	64,256	±3,209
Two or more races	84,808	±3,330

All tabulations contain derived estimates and margins of error.  
 2 - The data in some cells in this tabulation are not published in order to protect confidentiality.




New Public Data Service for Emergency Preparedness & Response

- Comprehensive Reports
- Real-time Data Updates
- Easy-to-use & Interoperable
- Historical Event Archive
- Flexible Analyses & Visualizations



Search: 

Filter ▾

[Update \(September 15, 2021\): Click here to read about application changes related to the COVID-19 Pandemic](#)
Events as of 11/10/2022 

## Hurricanes

## Tropical Storm Nicole

Florida, Georgia, South Carolina

Affected Population: 19,865,924

## Wildfires

## Campbell Fire

Humboldt County, CA, Trinity County, CA

Affected Population: 327

## Bremer Fire

Zip 95573

Affected Population: 311

## Mosquito Fire

Placer County, CA, El Dorado County, CA

Affected Population: 255

## Mckinney Fire

96050, 96097, 96085 and 1 other ZIP Codes (ZCTA)

Affected Population: 169

## Bolt Creek Fire

King County, WA, Snohomish County, WA

Affected Population: 31

## Cut Gap Fire

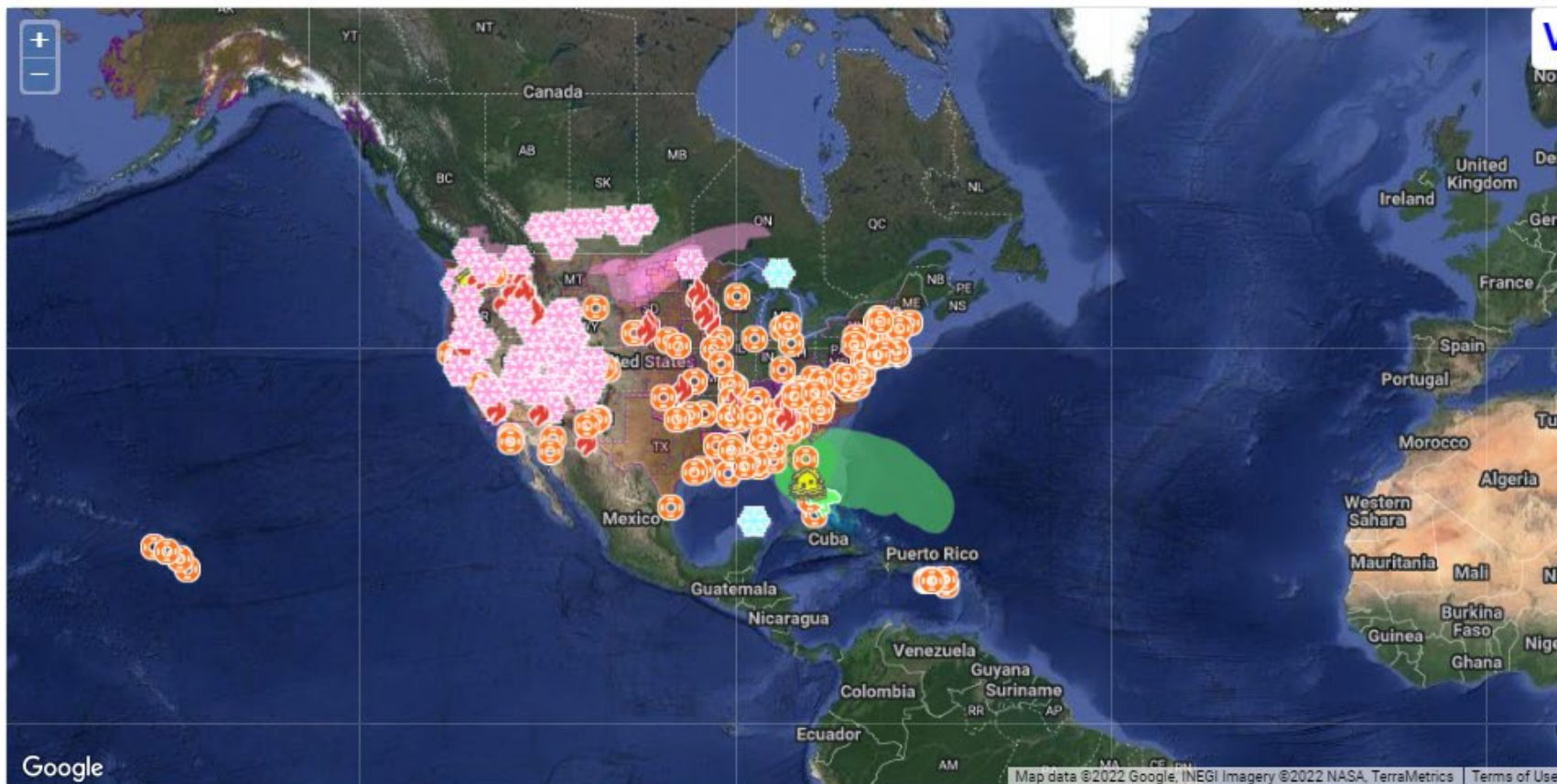
Zip 40456

Affected Population: 28

## Black Fire

Sierra County, NM, Grant County, NM, Catron County, NM

Affected Population: 8



# DR-4652 - New Mexico Wildfires Flooding, Mudflows and Straight-line Winds

Search: 

Filter ▾

Update (September 15, 2021): [Click here to read about application changes related to the COVID-19 Pandemic](#)

## Nearby Events

### Federal Disaster Declarations

DR-4652

Lincoln County, NM, San Miguel County, NM, Colfax County, NM and 4 other Counties

Affected Population: 294,601

EM-3559

Sandoval County, NM, Santa Fe County, NM

Affected Population: 3,288

EM-3558

Santa Ana Pueblo CDP, NM, Rio Rancho city, NM, Bernalillo town, NM

Affected Population: 619

### COVID-19 Pandemic

EM-3460

Catron County, NM, Socorro County, NM, Otero County, NM and 30 other Counties

Affected Population: 2,059,184

DR-4529

Catron County, NM, Socorro County, NM, Otero County, NM and 30 other Counties

Affected Population: 2,059,184

EM-3521

San Felipe Pueblo CDP, NM, Algodones CDP, NM

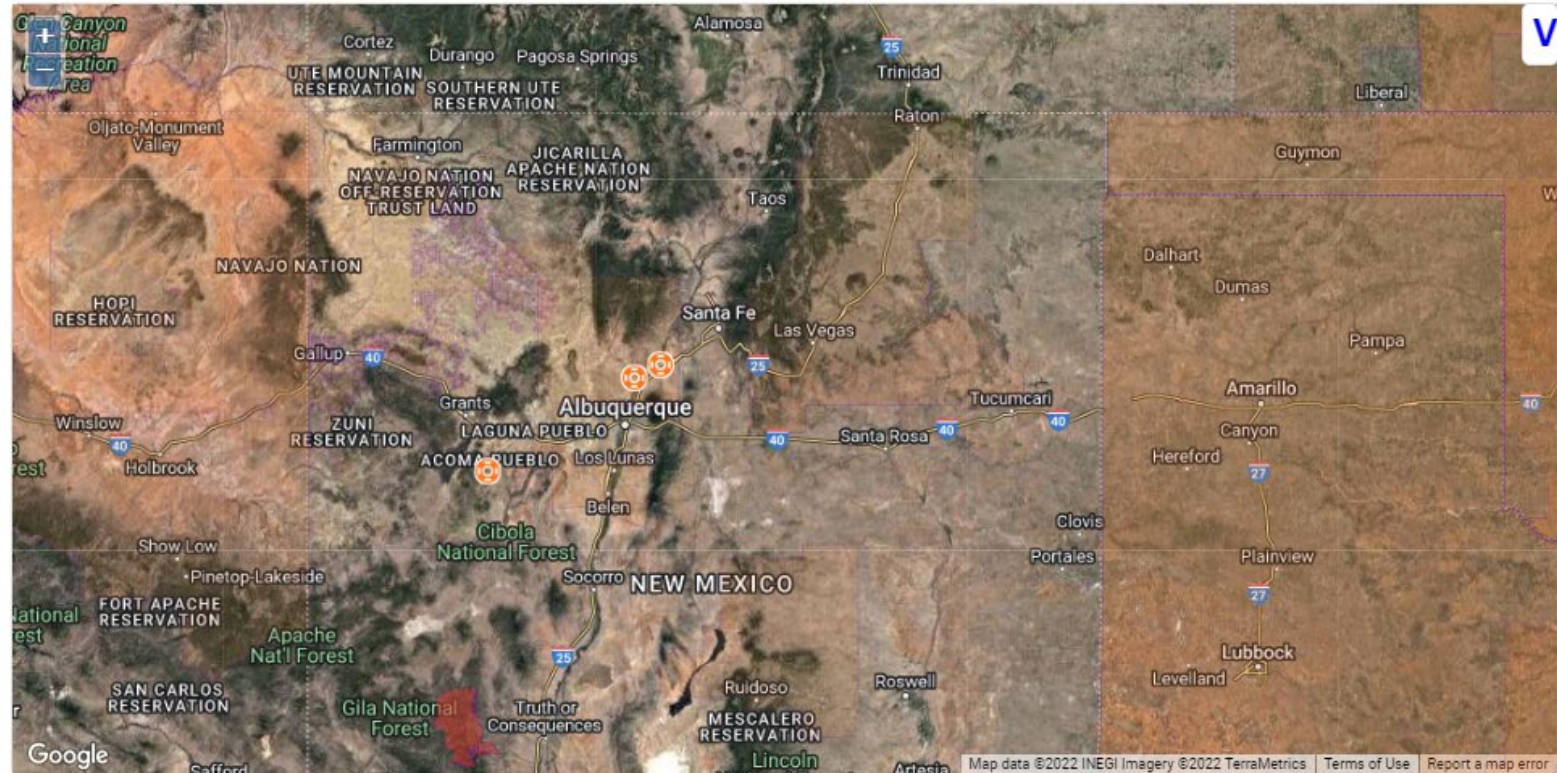
Affected Population: 3,563

EM-3519

Bernalillo County, NM, Valencia County, NM, Torrance County, NM

Affected Population: 3,461

EM-3520



# Disaster Declaration: DR-4652

Time: Wed, 03 Aug 2022 20:00:06 GMT

Export Share

Close

Detail by: Characteristics

Topic: 2015-2019 ACS Chara...

Analysis

Area: Event Area

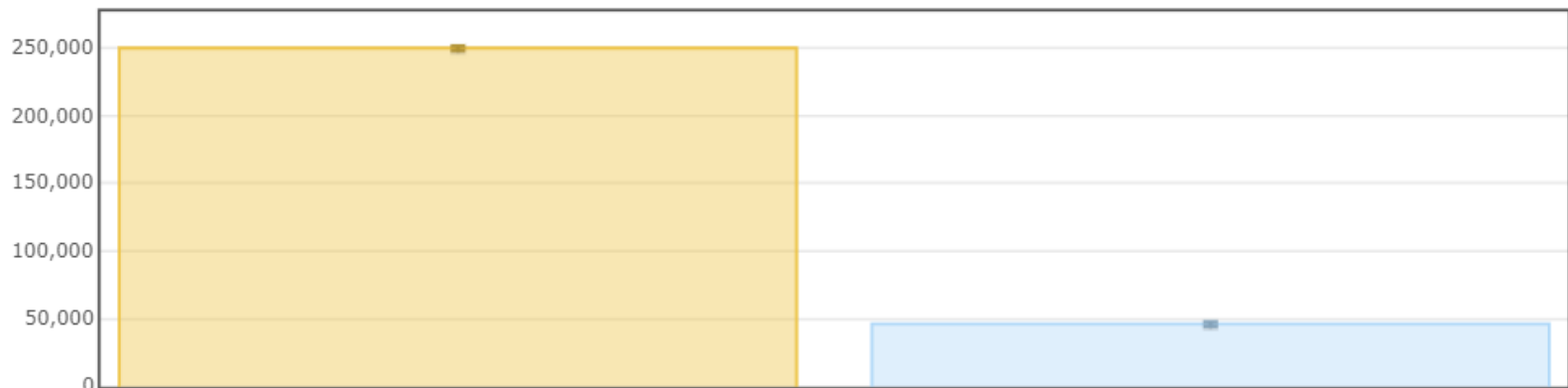
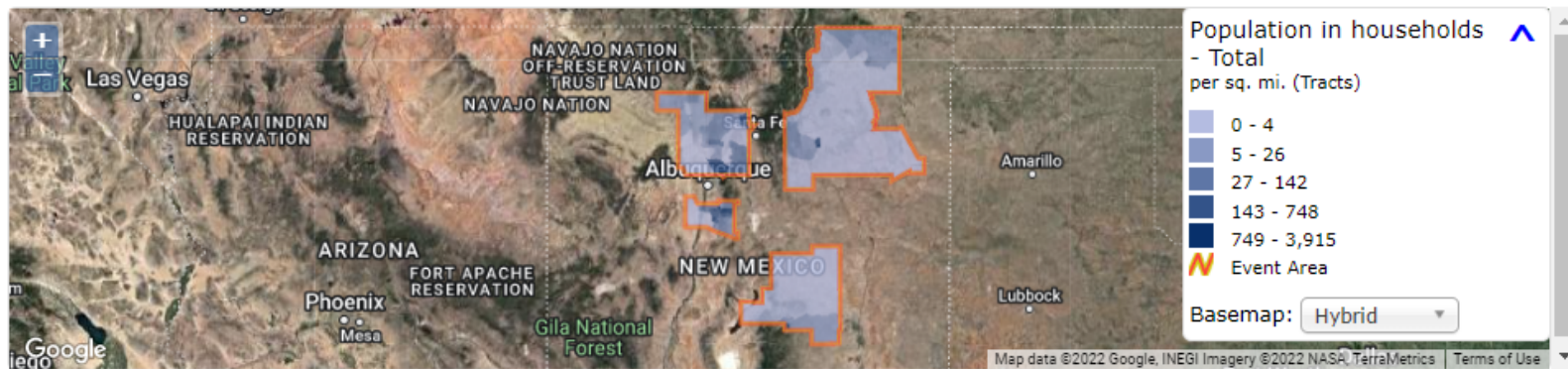
### Household Type

Universe: Population in households  
 Source: American Community Survey, 2015-2019. [Source info](#)  
[>>](#)

Characteristic	Estimate	Margin of Error
<b>Total</b>	<b>296,325</b>	<b>±466</b>
In family households	249,967	±1,783
In nonfamily households	46,358	±1,743

- Race
- Hispanic or Latino Origin
- Ability to Speak English by Age
- Ability to Speak English by Language Spoken at Home
- Disability Status by Poverty Status
- Disability Status by Age
- Ratio of Income to Poverty Level in the Past 12 Months

All tabulations contain derived estimates and margins of error.



[Start](#) [Base Map](#) [Selection](#)
[Save](#) [Load](#) [Feedback](#) [Previous Extent](#) [Hide Tabs](#)

#### Welcome to OnTheMap!

Start an analysis by using one of the tools below (Search, Import Geography, or Load .OTM file). Hover over the Help icons located throughout the application to see Help tips for using specific functionality. Sections in the control panel can be collapsed or opened by clicking the section title

#### 2019 data now available!

[Read New Data Notice \(11/2/2021\)](#)

#### Search


#### Import Geography

[Import from KML](#)
[Import from SHP](#)
[Import from GPS](#)

#### Load .OTM File

Click the "Load" button below to load a .OTM file.



# Import/Export

United States Census **OnTheMap**

LEHD Home Help and Documentation Reload Text Only

Start Base Map Selection Save Load Feedback Previous Extent Hide Tabs

Use the following tools to import a shape as your selection. The tools below (Search, Import Geography, or Load .OTM file). Hover over the Help icons located throughout the application. Click the shapes on the map to select and unselect them or use as your selection.

2019 data now available!  
[Read New Data Notice \(11/2/2021\)](#)

- Cancel Import**
- Zoom To Imported Shapes**
  - Select All Points
  - Select All Lines
  - Select All Polygons
- Clear Selection**

**Continue with Selected Features**

- Import Geography
  - Import from KML
  - Import from SHP
  - Import from GPS
- Load .OTM File
  - Click the "Load" button below to load a .OTM file
  - Load

Map showing the United States with several orange shapes highlighted in the western region. Major cities labeled include Seattle, Portland, San Francisco, San Jose, Los Angeles, San Diego, Phoenix, El Paso, Denver, Chicago, Detroit, Columbus, Washington, New York, Philadelphia, Boston, Los Angeles, Las Vegas, San Diego, Phoenix, El Paso, Dallas, Houston, Memphis, Charlotte, and Jacksonville. A scale bar indicates 1000 km and 500 mi. Coordinates are shown as -70.65988, 39.86526.

# Area Profile

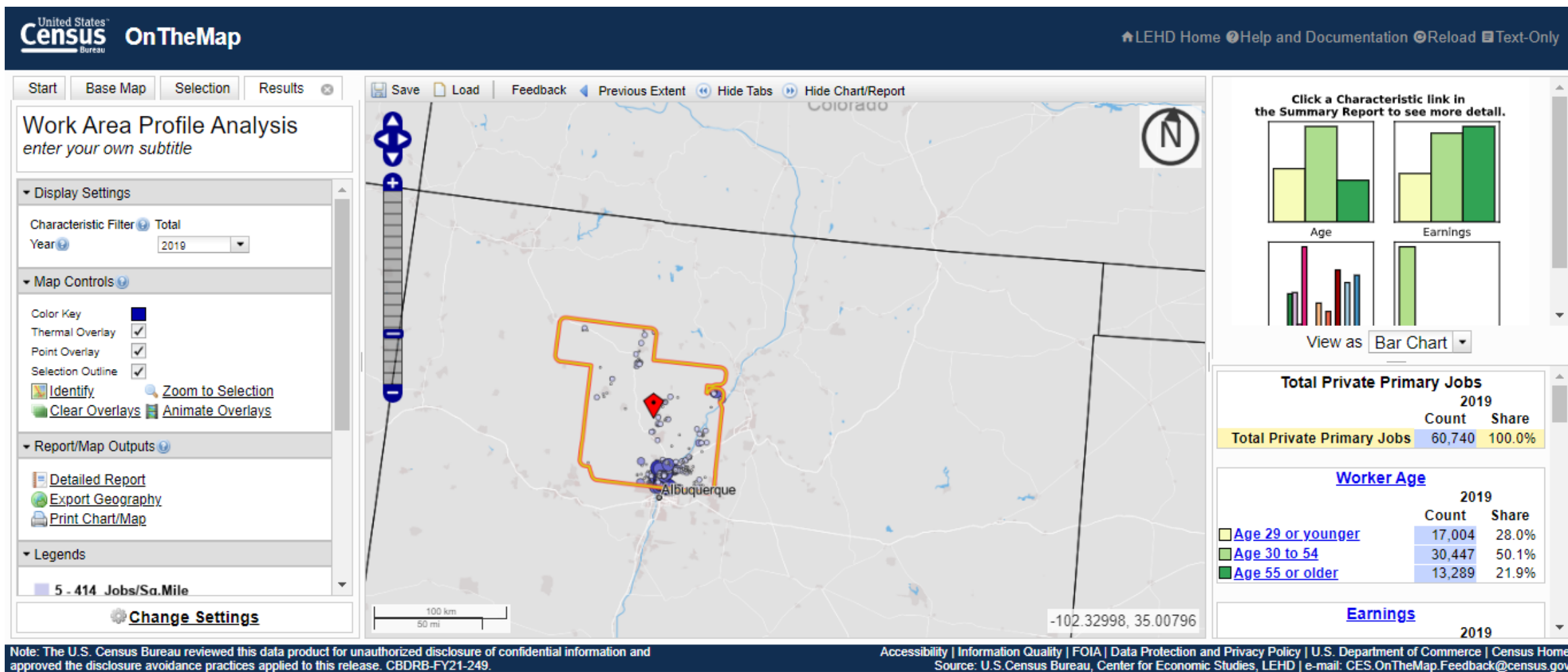
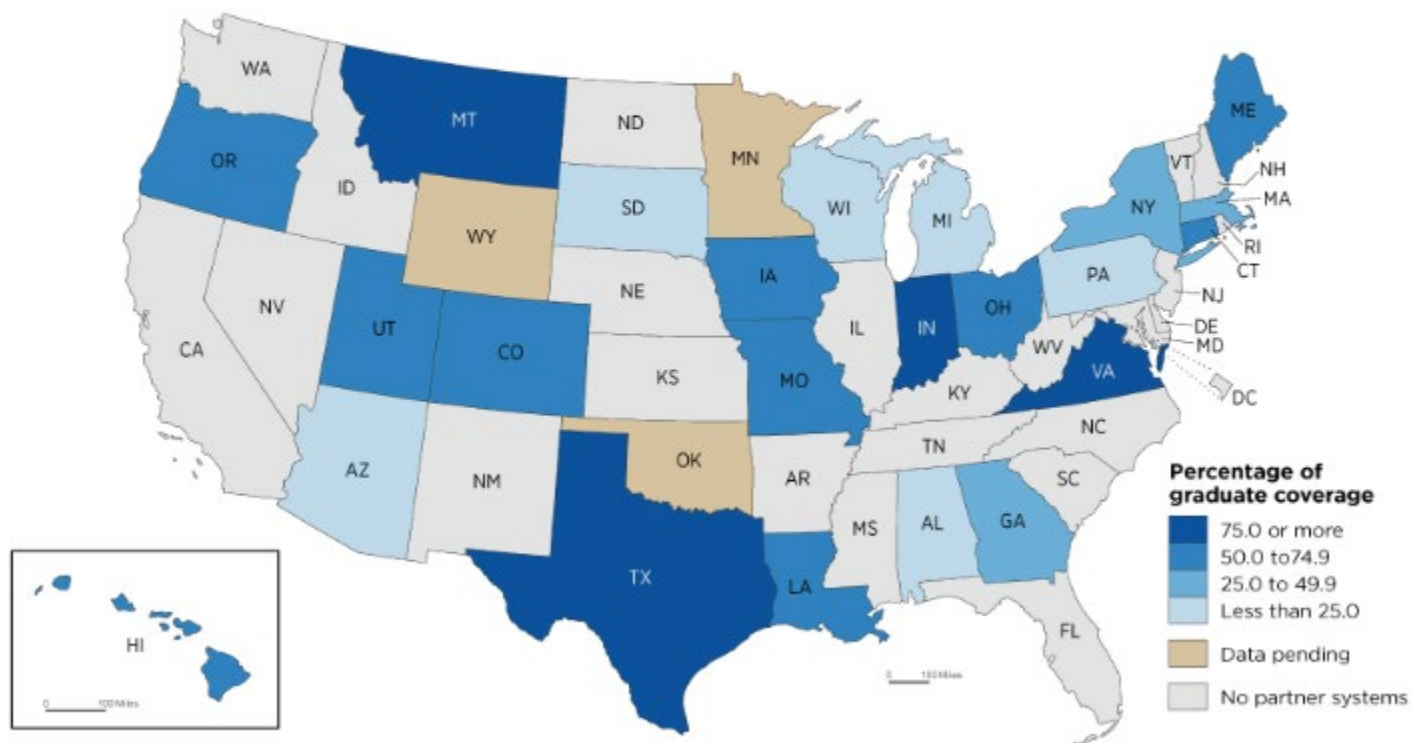




Figure 1.  
**Post-Secondary Employment Outcomes Coverage**



Source: U.S. Census Bureau, Post-Secondary Employment Outcomes.

## Tech's Return on Investment Stands Out

A U.S. Census Bureau project shows a Tech education stands out as a particularly advantageous financial decision.





## Post-Secondary Employment Outcomes Explorer

[What is PSEO?](#)
[Download Data](#)
[Email Us](#)
[Tutorial](#)
[Help](#)

Data Type

Earnings  Flows

State

Georgia ▾

Institution

Georgia Institute of Technology ▾

Degree Level

Baccalaureate ▾

Graduation Cohort

All Cohorts ▾

Compare Earnings by

Time  Percent

Years-postgrad Filter

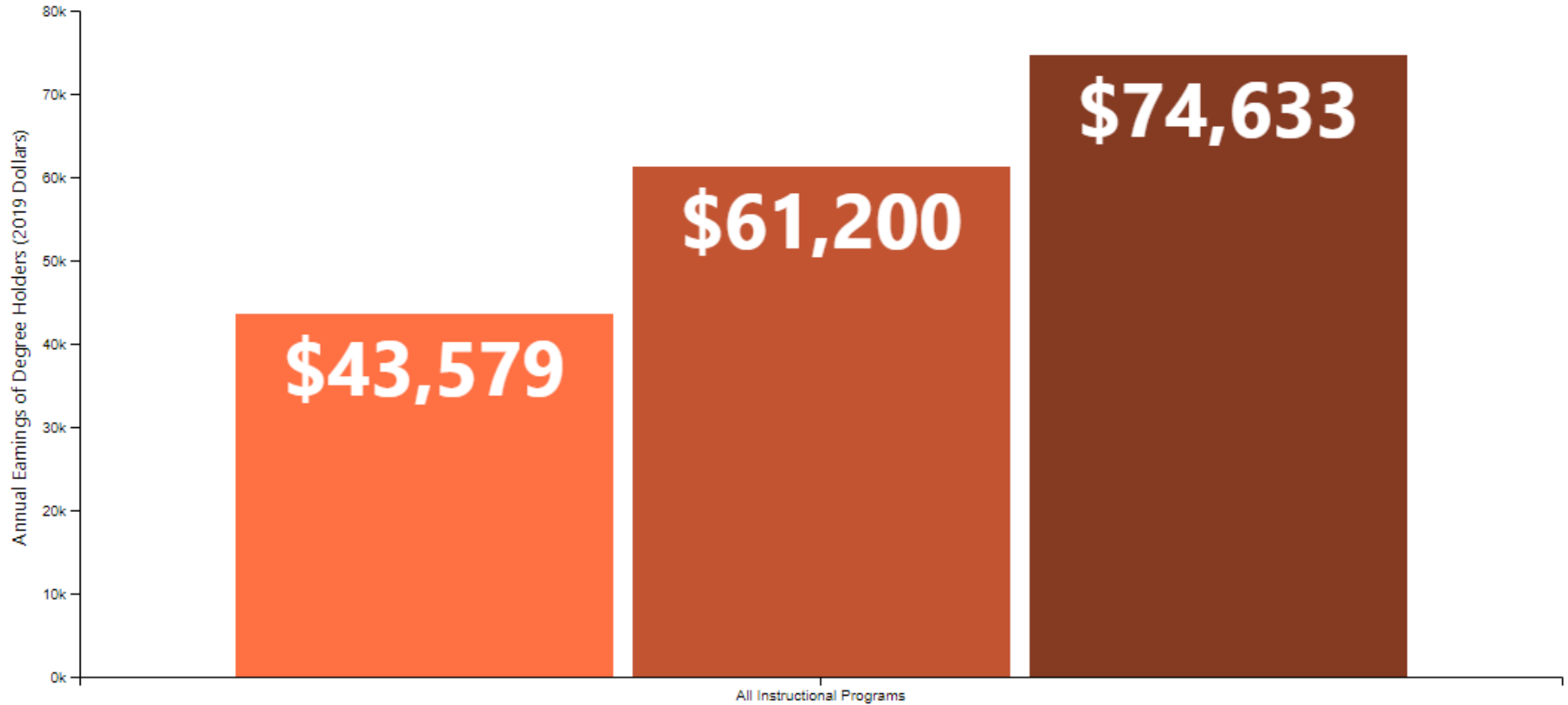
1  5  10

Legend

25th Percentile ■

50th Percentile ■

75th Percentile ■



# Veteran Employment Outcomes Explorer

MILITARY SPECIALIZATION ▾ SERVICE CHARACTERISTIC ▾ DEMOGRAPHIC ▾ INDUSTRY ▾ STATE ▾ HELP ?

Occupation  
 2 Occupations Selected  
Select Multiple Characteristics

Cohort  
 All Cohorts



# Summary and Resources

## Help and Documentation

### Quarterly Workforce Indicator

[https://lehd.ces.census.gov/applications/help/qwi\\_explorer.html#!what\\_is\\_qwi\\_explorer](https://lehd.ces.census.gov/applications/help/qwi_explorer.html#!what_is_qwi_explorer)

### Job-to-Job Flows

[https://lehd.ces.census.gov/applications/help/j2j\\_explorer.html#!what\\_is\\_j2j\\_explorer](https://lehd.ces.census.gov/applications/help/j2j_explorer.html#!what_is_j2j_explorer)

### OnTheMap

[https://lehd.ces.census.gov/applications/help/onthemap.html#!getting\\_started](https://lehd.ces.census.gov/applications/help/onthemap.html#!getting_started)

### OnTheMap for Emergency Management

[https://lehd.ces.census.gov/applications/help/onthemap\\_em.html#!getting\\_started](https://lehd.ces.census.gov/applications/help/onthemap_em.html#!getting_started)

### Post Secondary Employment Outcomes

[https://lehd.ces.census.gov/data/pseo\\_experimental.html#methodology](https://lehd.ces.census.gov/data/pseo_experimental.html#methodology)

### Veteran Employment Outcomes

[https://lehd.ces.census.gov/data/veo\\_experimental.html](https://lehd.ces.census.gov/data/veo_experimental.html)

# Q & A and Thank You!

## Contact Information:

Earlene K.P. Dowell

**301-763-9628**

**[earlene.kp.dowell@census.gov](mailto:earlene.kp.dowell@census.gov)**

To schedule additional training with a Census Data Dissemination

Specialist in your area, please call **844-Ask-Data**

Or email us at: **[census.askdata@census.gov](mailto:census.askdata@census.gov)**

