



Traffic Crash Data in New Mexico: Common Questions and New Tools for Data-Driven Decisions

NM DATA USER CONFERENCE

NOVEMBER, 2025

JESSICA BLOOM AND DAVID JACOBS

UNM GEOSPATIAL AND POPULATION STUDIES CENTER (UNM-GPS)

Agenda

1. Options for Accessing NMDOT Crash Data
2. Common Questions
 - Data Availability
 - Crash Coordinate Accuracy
 - Top Contributing Factor and Crash Classification
3. New Tools for Visualizing Crash Data
 - Tour the Interactive Crash Map
 - Spotlight on Pedestrian and Bicycle Dashboards

Crash Data Collection in New Mexico and the Role of UNM-GPS

NM Department of Transportation (NMDOT) Crash Database

- Crashes reported by law enforcement involving a motor vehicle
- Involves a fatality, injury or >\$500 in damages
- Occurs on public roadways
- Contains over 45,000 crashes per year
- Informs decisions to improve safety for all roadway users

UNM Geospatial and Population Studies (UNM-GPS)

- Contracted by NMDOT Traffic Safety Division
- Compiles crash reports into a standardized database
- Improves data quality: Geocode, clean, and standardize
- Provides crash database expertise and analyses to NMDOT
- Produces crash statistics; Fulfills approved data requests
- Maintains NMDOT's state crash database (1978-present)
- UNM Data Security & Privacy
 - Access-controlled, firewall-protected, and securely transferred (SFTP)
 - Data request datasets are de-identified

Public Availability of Crash Statistics

Community Statistics

- Localized crash statistics for counties, cities, municipalities, and pueblos.
- On request: any U.S. Census CDP

Statewide Statistics

- [Traffic Crash Annual Report](#)
- [DWI Annual Report](#) (alcohol only)
- Both contain county crash rates

Fatality Statistics, Monthly

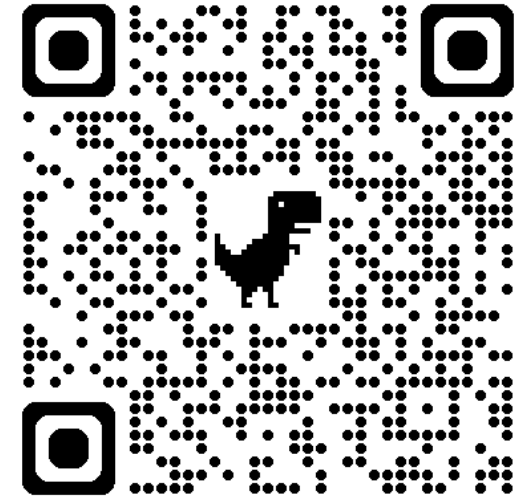
- Very preliminary, esp. alcohol/drug data

Geospatial Analysis

- [Pedestrian/Pedalcycle Crash Dashboards](#)
- [Crash Density Maps](#)

Request Datasets

- End users can request a dataset of crashes in New Mexico or at a specific intersection
- Data available at three levels
 - Crash-level: one row per crash
 - Vehicle/Driver-level: one row per vehicle/driver/non-motorist
 - Person-level: one row per person (passengers, drivers, non-motorists)
- Excludes controlled unclassified information (personal identifiers)
- [Crash data dictionaries](#)



<https://gps.unm.edu/tru>

Frequently Asked Questions

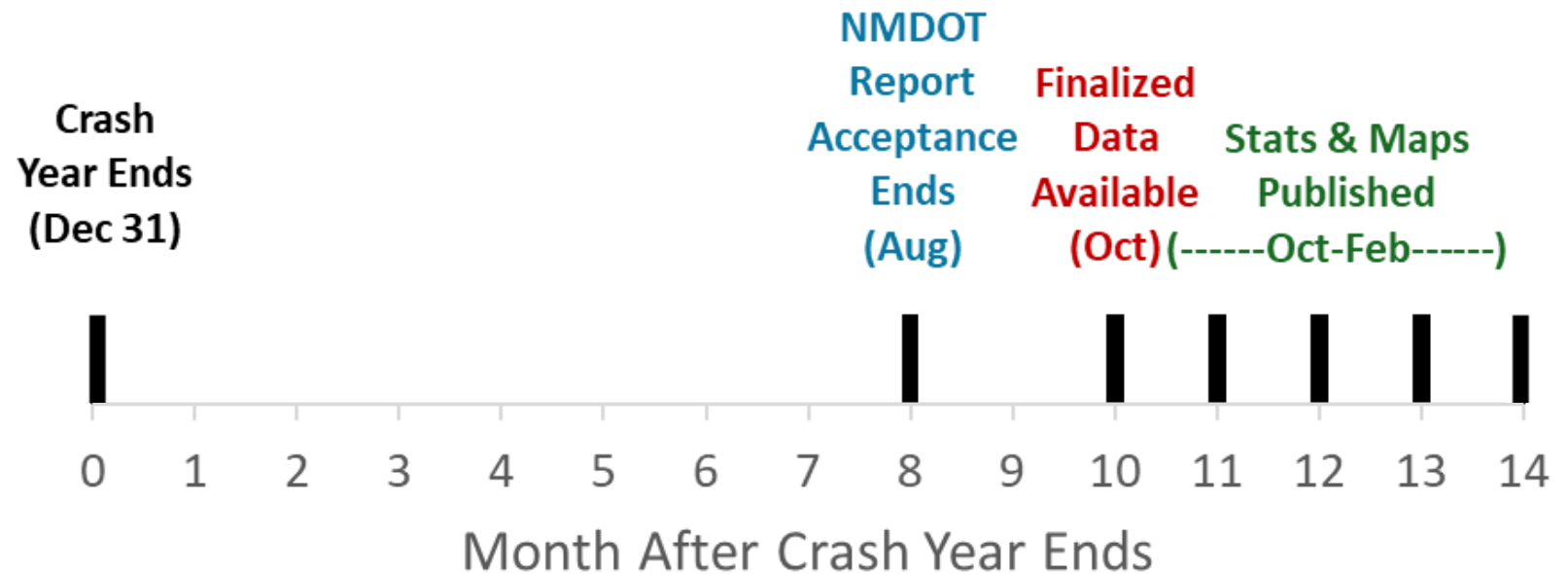
Crash Data Availability Timeline (Crash to Database)

Average Time from Crash to Database:

TraCS Agencies: 20 days

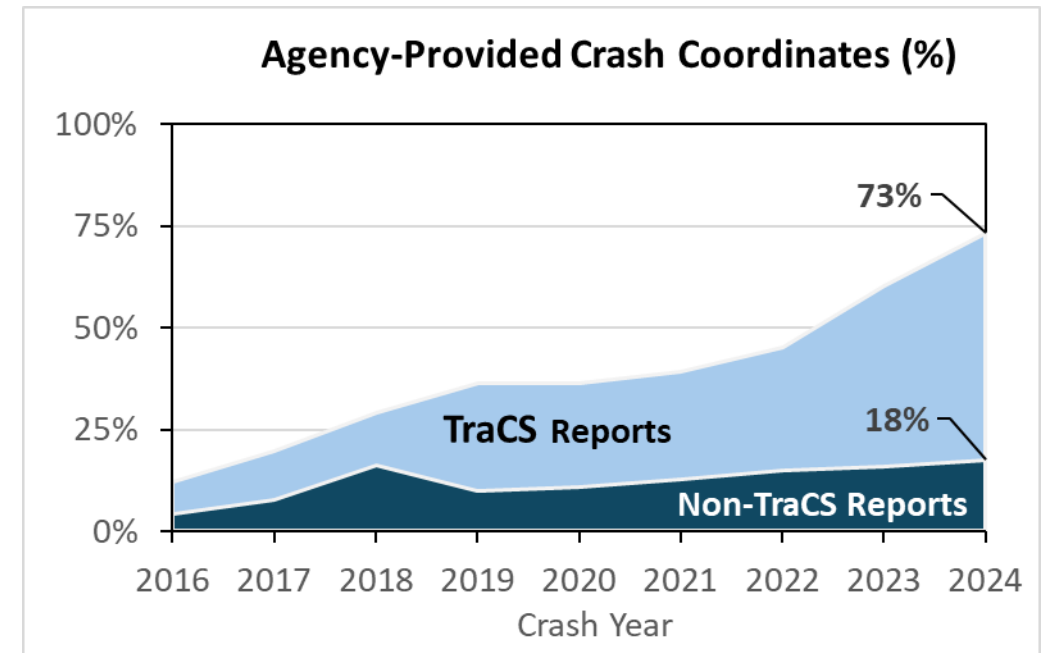
Non-TraCS Agencies: 128 days (~4 months)

Submitting crash reports to NMDOT promptly helps make data available faster.



Crash Coordinates: Accuracy Depends on Reporting Method

- Why Crash Points Cluster in Intersection Centers
 - No crash coordinates provided by agency
 - UNM-GPS geocodes to nearest intersection, milepost, or center of interchange
 - Ensures location queries capture nearby crashes
- Roll of TraCS Software
 - Officers click crash location on a map
 - Software auto-fills coordinates
- Issue: crash location versus vehicle's final location



2024 Coordinates: 73% of all TraCS reports vs. 18% all non-TraCS

Crash Classification Retired — Replaced with First Harmful Event

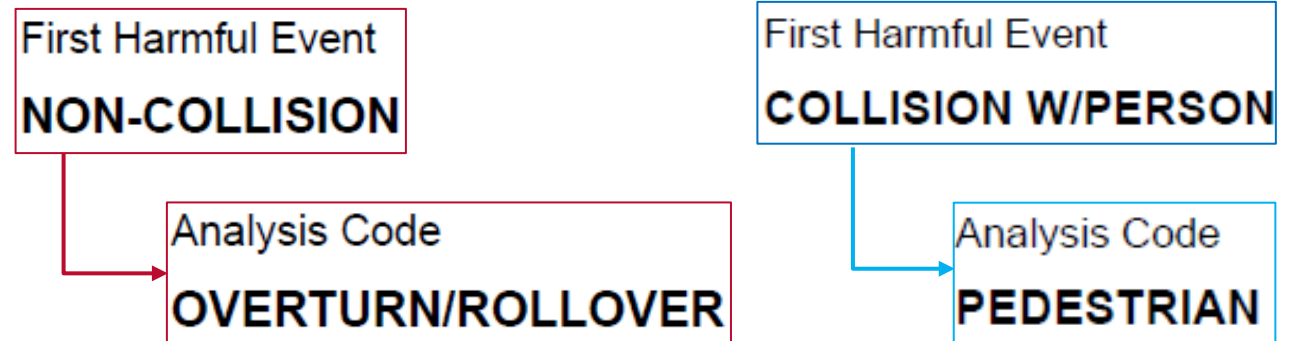
Before

- Crash Classification and Analysis
- Phased out in 2020 to meet federal requirements

CRASH CLASSIFICATION Overturned Pedestrian
 Rollover Pedal Cyclist

Now

- Replaced by First Harmful Event (FHE) and FHE Analysis
- Nearly all data once in Crash Classification/Analysis is now captured in FHE/FHE Analysis.

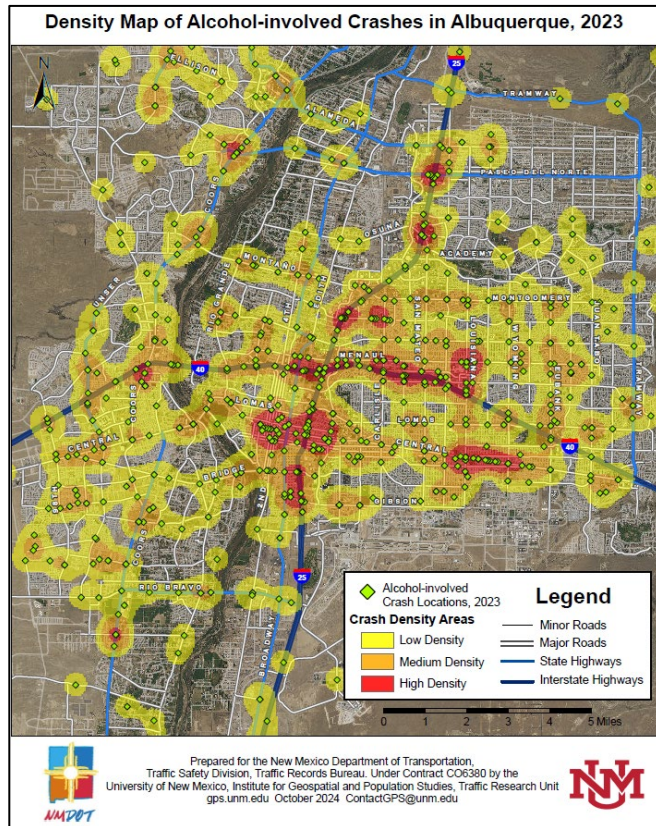


Tips:

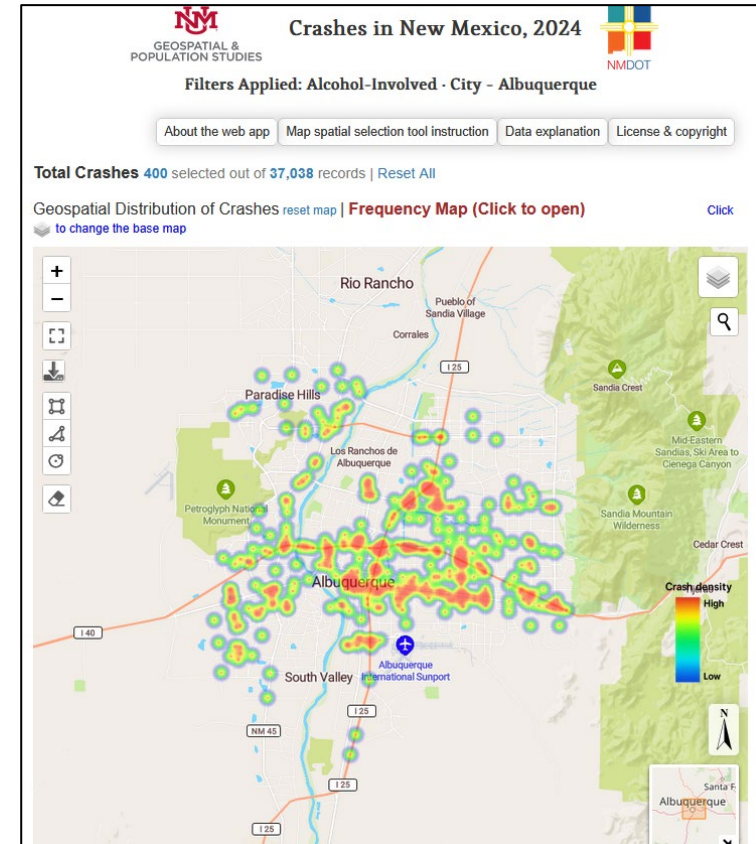
- For Officers: Overturn/Rollover can be found under Non-Collision, instead of “Other”.
- Dataset users: Older, multi-year datasets are available with derived First Harmful Event.

New Tools for Data-Driven Decisions

New Interactive Annual Crash Map



Static Maps



Interactive Maps

Pedestrian and Pedalcycle Crash Data Dashboards

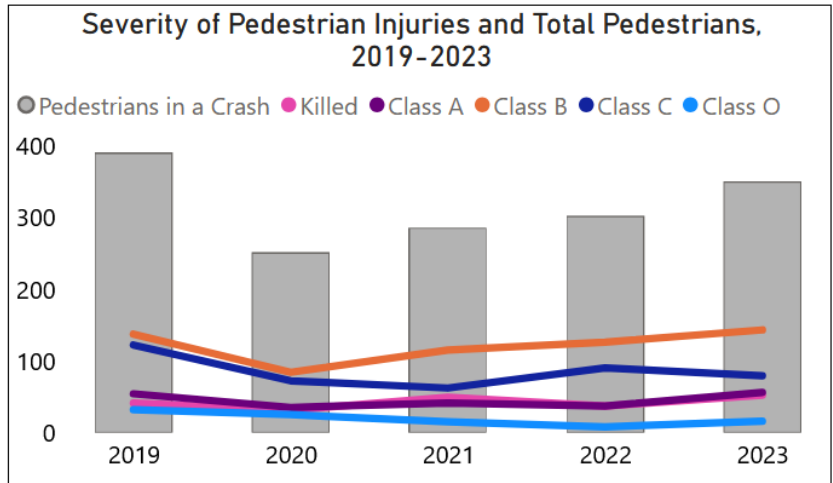
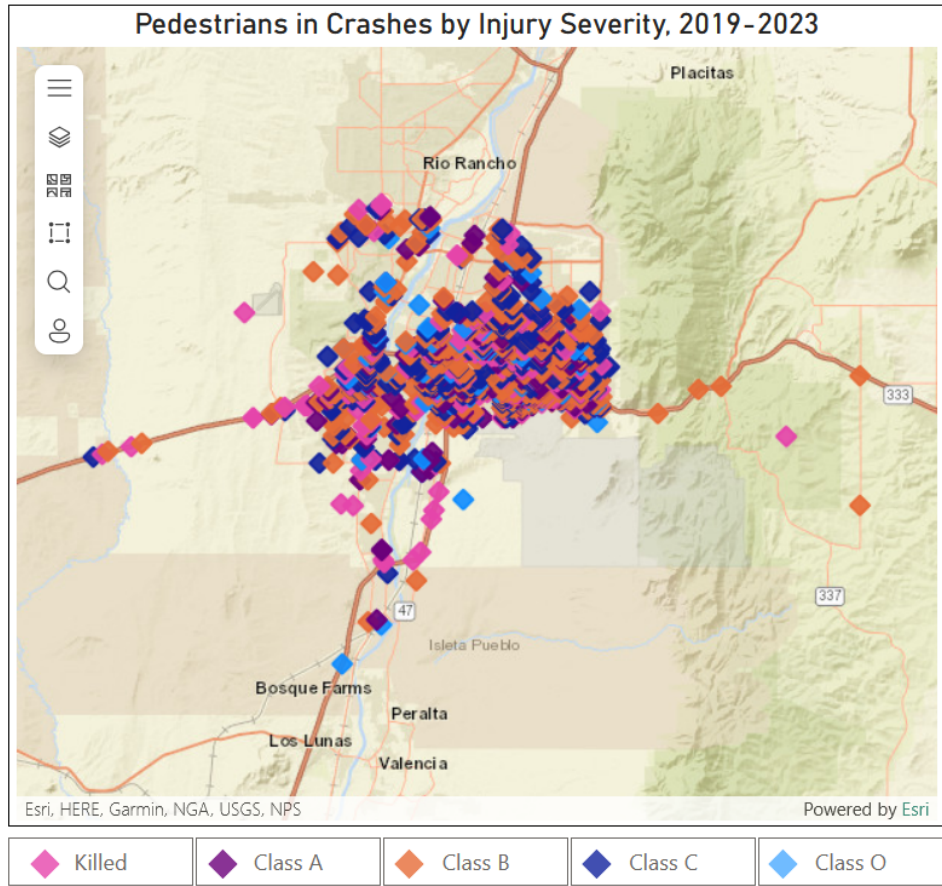
CRASH YEAR

- Select all
- 2019
- 2020
- 2021
- 2022
- 2023

COUNTY, CITY

Search

- Select all
- Bernalillo
- Chaves
- Cibola
- Colfax
- Curry
- De Baca
- Doña Ana
- Eddy
- Grant
- Guadalupe
- Hidalgo
- Lea
- Lincoln



Severity of Pedestrian Injuries by Year, 2019-2023

Year	Killed	Class A	Class B	Class C	Class O	Total
2019	42	55	138	123	33	391
2020	32	36	85	73	26	252
2021	50	42	116	63	16	287
2022	38	38	127	91	9	303
2023	53	57	144	80	17	351
Total	215	228	610	430	101	1,584

Data Source: NMDOT Traffic Crash Database. For more information about the crash data found here please review the data dictionaries found at: <https://gps.unm.edu/tru/data-dictionaries.html>

Suggested Citation: University of New Mexico, Geospatial and Population Studies (UNM-GPS). Pedestrian Traffic Crash Dashboard, 2019-2023. Published August 28, 2025. NMDOT Traffic Safety Division. Retrieved from <https://gps.unm.edu/tru/reports/crash-dashboards/index.html>

Special thanks to the staff at:
UNM-GPS, UNM-BBER,
NMDOT Traffic Records Bureau,
and Law Enforcement Agencies

Statistics available at: gps.unm.edu

University of New Mexico,
Geospatial and Population Studies
(UNM-GPS)

Jessica Bloom
jbloom1@unm.edu

David Jacobs
djacobs1@unm.edu

