

2020 Census Geography: What's Changed and What's Stayed the Same

Michael Ratcliffe
Geography Division
US Census Bureau

New Mexico State Data Center Users Conference
November 18, 2020



Shape
your future
START HERE >

United States[®]
Census
2020

Geographic Update Programs

Prior to tabulation:

- Boundary and Annexation Survey (BAS).
- Redistricting Data Program.
- Boundary Quality Assessment and Reconciliation Project (BQARP).
- School District Review Program.
- Participant Statistical Areas Program (PSAP).
- Census block delineation.

Post-tabulation:

- ZIP Code Tabulation Area (ZCTA) delineation.
- Urban Area delineation.
- Public Use Microdata Area delineation.
- Congressional district and state legislative district updates.

Numbers of Entities: United States, Puerto Rico, and the Island Areas

Entity Type	Number of Entities: 2020 (preliminary)	Number of Entities: 2010
American Indian, Alaska Native, Native Hawaiian Areas	705	692
County and Equivalent	3,235	3,234
County Subdivisions	36,700	36,713
Incorporated Places and Census Designated Places	32,157	29,793
Census Tracts	85,369	74,134
Block Groups	241,813	220,742
Census Blocks	8,180,875	11,166,336

Numbers of Entities: United States (50 States and DC)

Entity Type	Number of Entities: 2020 (preliminary)	Number of Entities: 2010
American Indian, Alaska Native, Native Hawaiian Areas	705	692
County and Equivalents	3,144	3,143
County Subdivisions	35,690	35,703
Incorporated Places and Census Designated Places	31,586	29,261
Census Tracts	84,255	73,056
Block Groups	238,855	217,740
Census Blocks	approx. 8.17 million	11,078,297

Sources: TIGERWeb State-Based Data Files, https://tigerweb.geo.census.gov/tigerwebmain/TIGERweb_state_based_files.html

Numbers of Entities: New Mexico

Entity Type	Number of Entities: 2020 (preliminary)	Number of Entities: 2010
American Indian Areas	26	25
County and Equivalent	33	33
County Subdivisions	130	130
Incorporated Places and Census Designated Places	527	443
Census Tracts	612	499
Block Groups	1,614	1,449
Census Blocks	107,215	168,609

Changes to Counties and County Equivalents

- New census areas in Alaska: Chugach (02063) and Copper River (02066) (formed from Valdez-Cordova—02261). The boundary between the new census areas is the same as the boundary between the former census subareas.
- Bedford, VA (former independent city--51515) reverted to town status and merged into Bedford County (51019).
- Earlier in the decade, Shannon County, SD (46113) changed its name to Oglala Lakota (46102). Wade Hampton Census Area, AK (02270) changed its name to Kusilvak (02158).
- Petersburg Borough, AK (02195) created from part of former Petersburg Census Area (02195) and part of Hoonah-Angoon Census Area (02105).

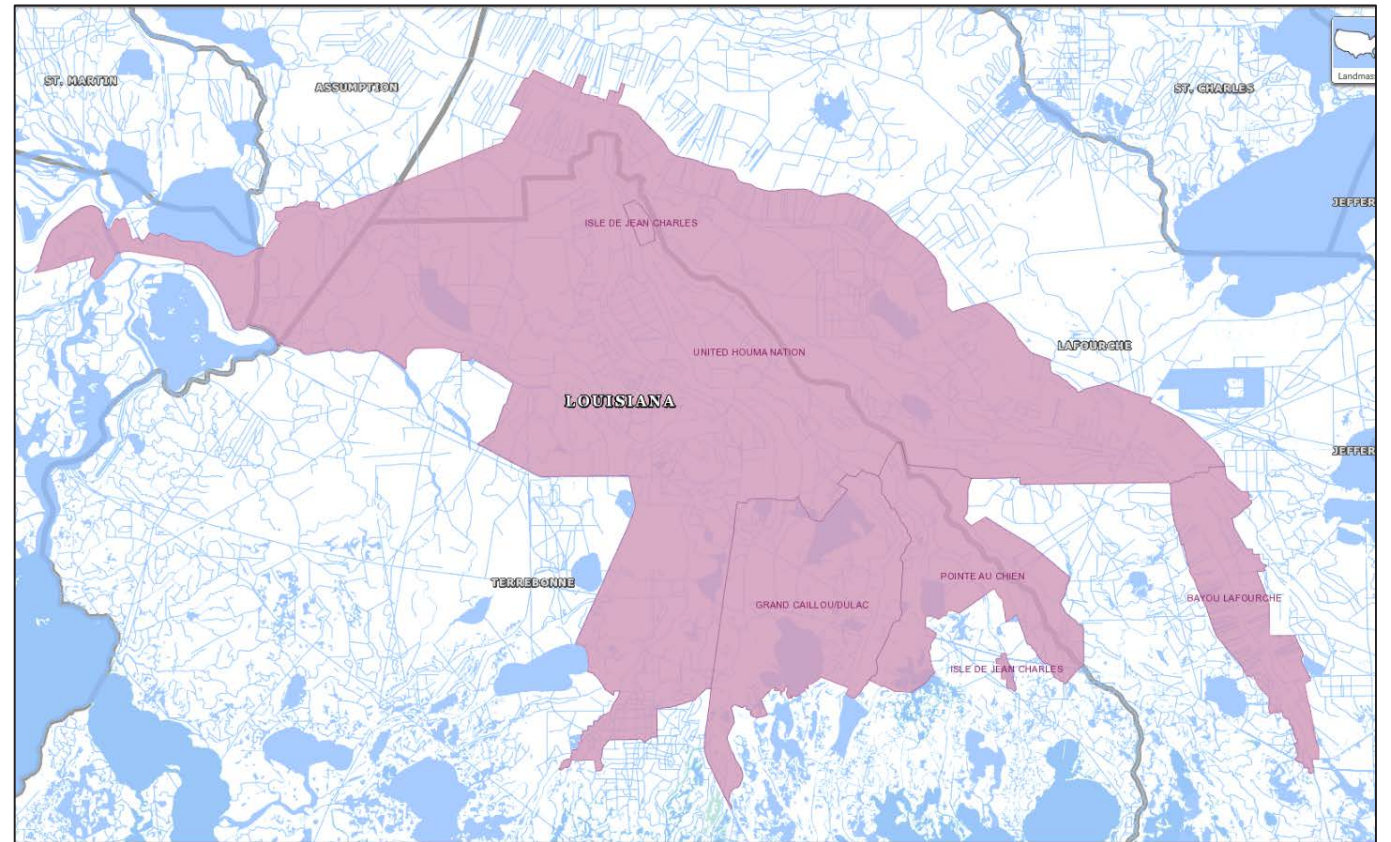
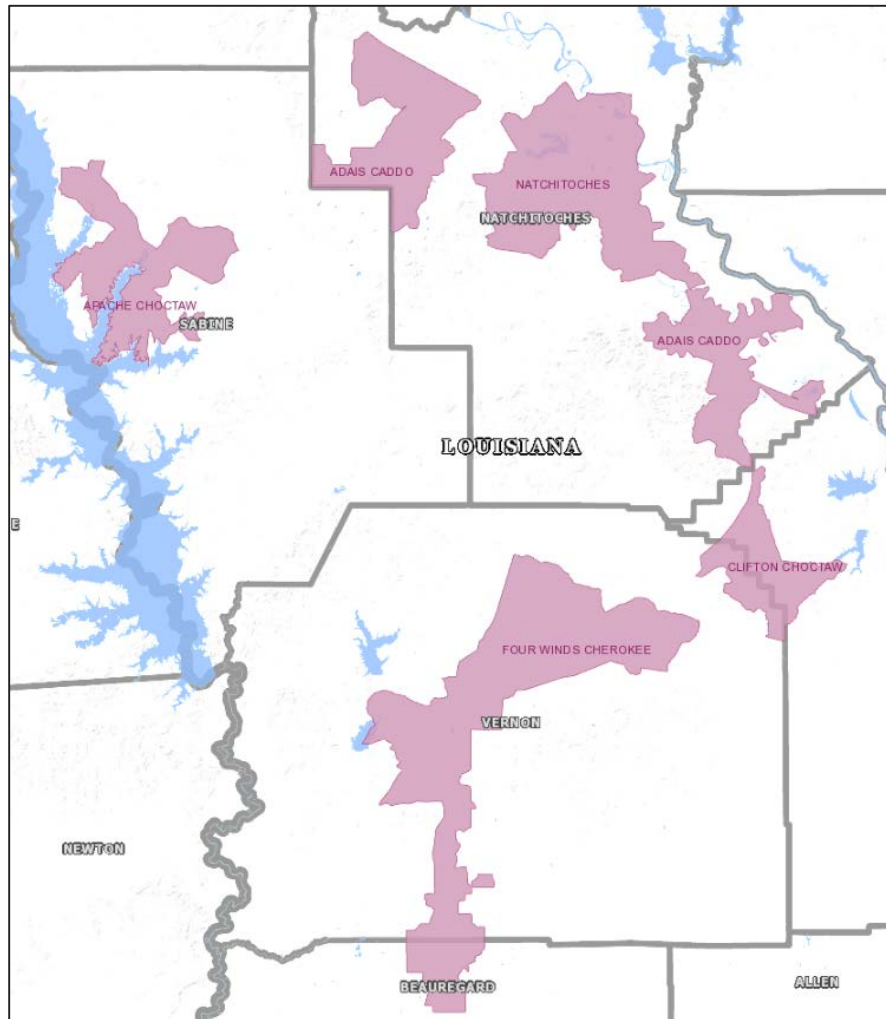
New American Indian and Alaska Native Areas

- Federally Recognized American Indian Reservation: Fort Sill Apache Reservation (NM), Cowlitz Reservation (WA)
- Alaska Native Village Statistical Area: Uyak
- Tribal Designated Statistical Areas: Chickahominy, Eastern Chickahominy, and Rappahannock (all in Virginia)
- State Designated Tribal Statistical Areas: 7
 - Georgia: 1— Georgia Tribe of Eastern Cherokee
 - Louisiana: 5— Bayou Lafourche, Isle de Jean Charles, Grand Caillou/Dulac, Natchitoches, Pointe au Chien
 - South Carolina: 1— Edisto Natchez Kusso

In New Mexico, new since 2010:

- Fort Sill Apache Reservation (Luna County: established 2012)
- Laguna Off-Reservation Trust Lands (Cibola County)
- Pojoaque Off-Reservation Trust Lands (Santa Fe County)
- Santa Clara Pueblo Off-Reservation Trust Lands (Rio Arriba County)

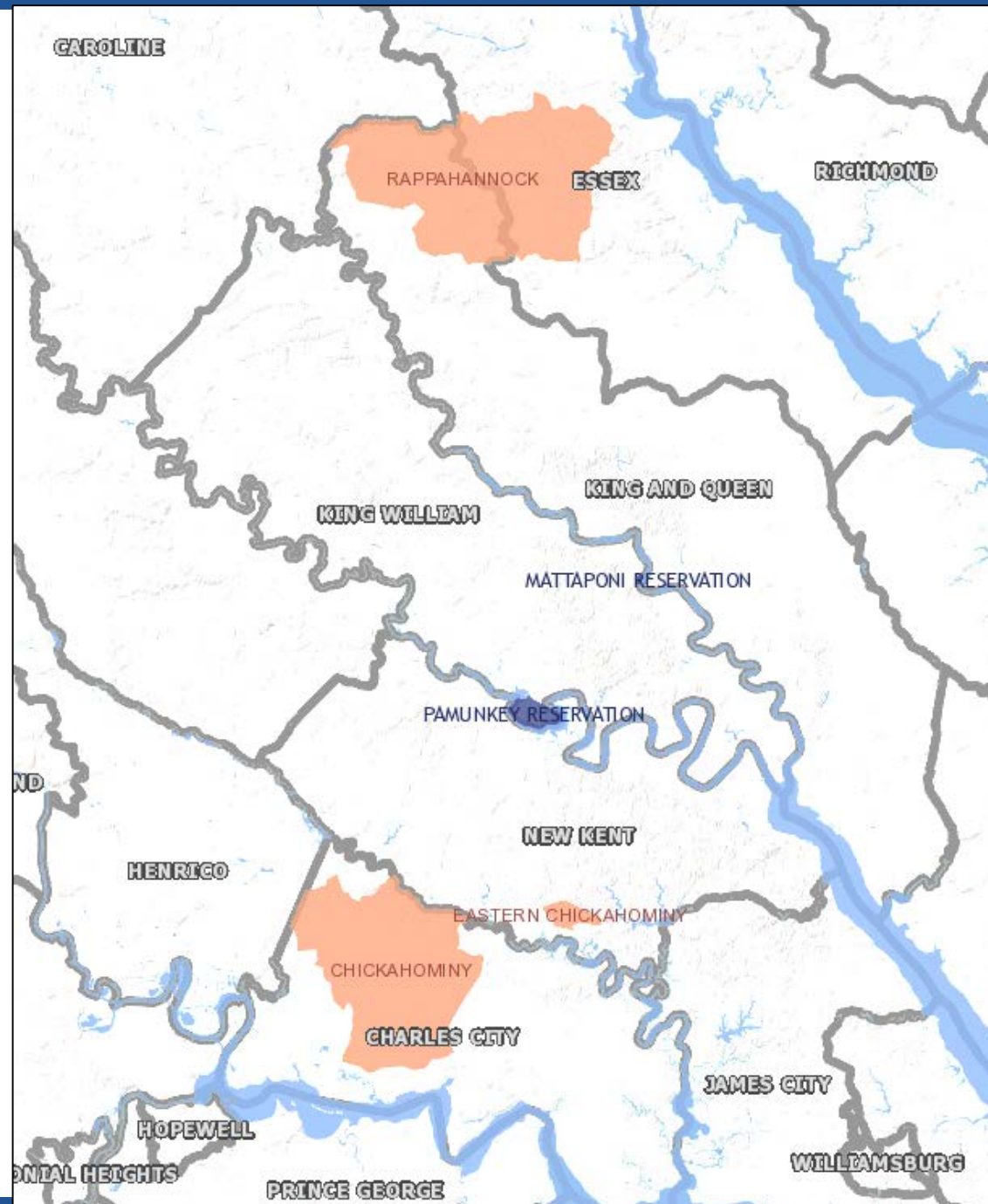
SDTSAs in Louisiana for the 2020 Census



Isle de Jean Charles, Grand Caillou/Dulac, and Bayou Lafourche formed in part from territory that was in United Houma Nation in 2010.

Changes in Status and Entity Type

- Chickahominy and Eastern Chickahominy tribes, in Virginia, received Federal recognition; their areas changed from State Designated Tribal Statistical Areas to Tribal Designated Statistical Areas (TDSA).
- Rappahannock was added as a new TDSA.



Changes to Incorporated Places and Census Designated Places

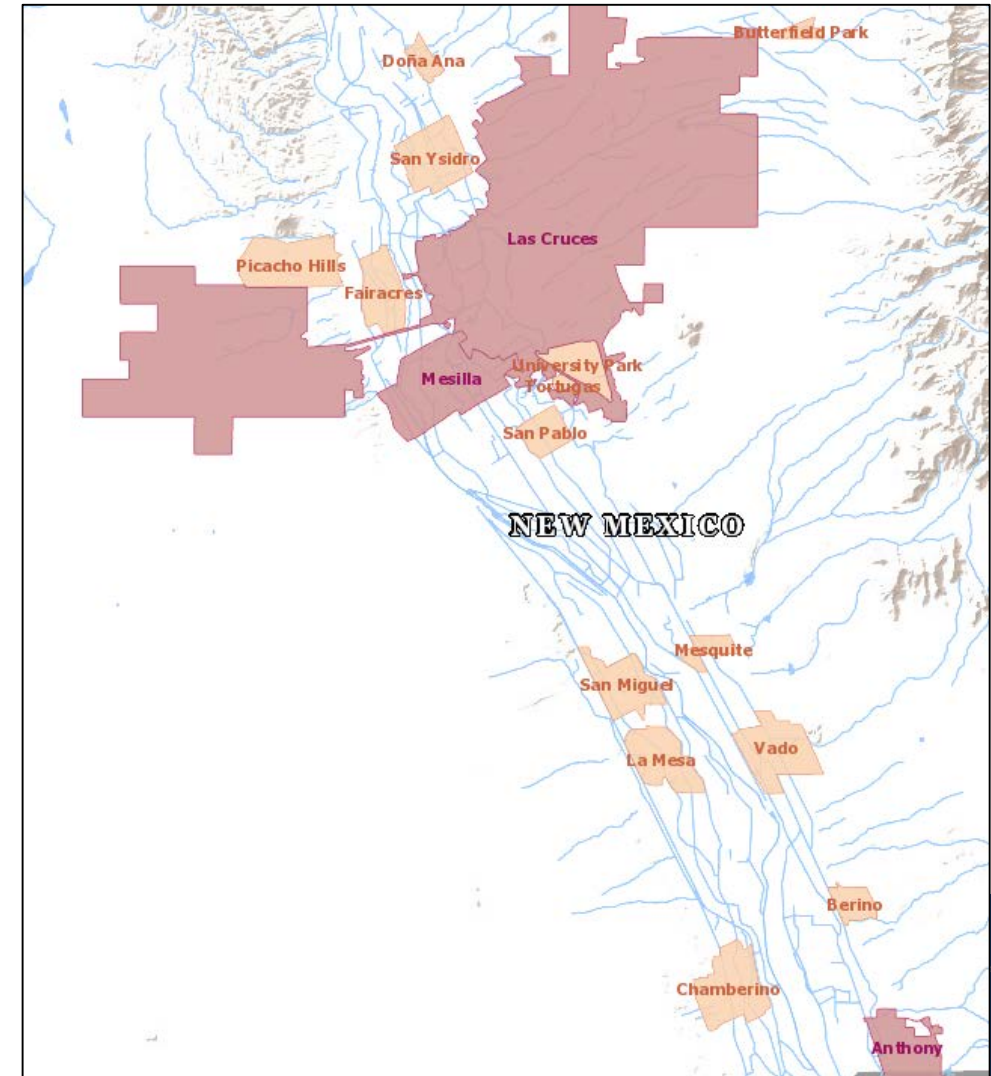
<https://www.census.gov/geographies/reference-files/time-series/geo/bas/new-annex.html>

- Approximately 70 new incorporated places since 2010.
 - 19 were census designated places (CDPs) in 2010.
- Approximately 75 incorporated places disincorporated since 2010.
 - 57 were re-defined as CDPs.
- 34 mergers and consolidations, mostly pairs of places or places and townships.
- A handful of name changes:
 - Barrow city, AK changed to Utqiagvik.
 - Ocean Breeze Park town, FL changed to Ocean Breeze.
 - East Carbon-Sunnyside city, UT change to East Carbon.
 - Abington township in Lackawanna County, PA change to Waverly township.
- The total number of CDPs in the US, Puerto Rico, and Island Areas has increased from 10,038 in 2010 to 12,425 as of August 2020.

Changes to Incorporated Places and Census Designated Places

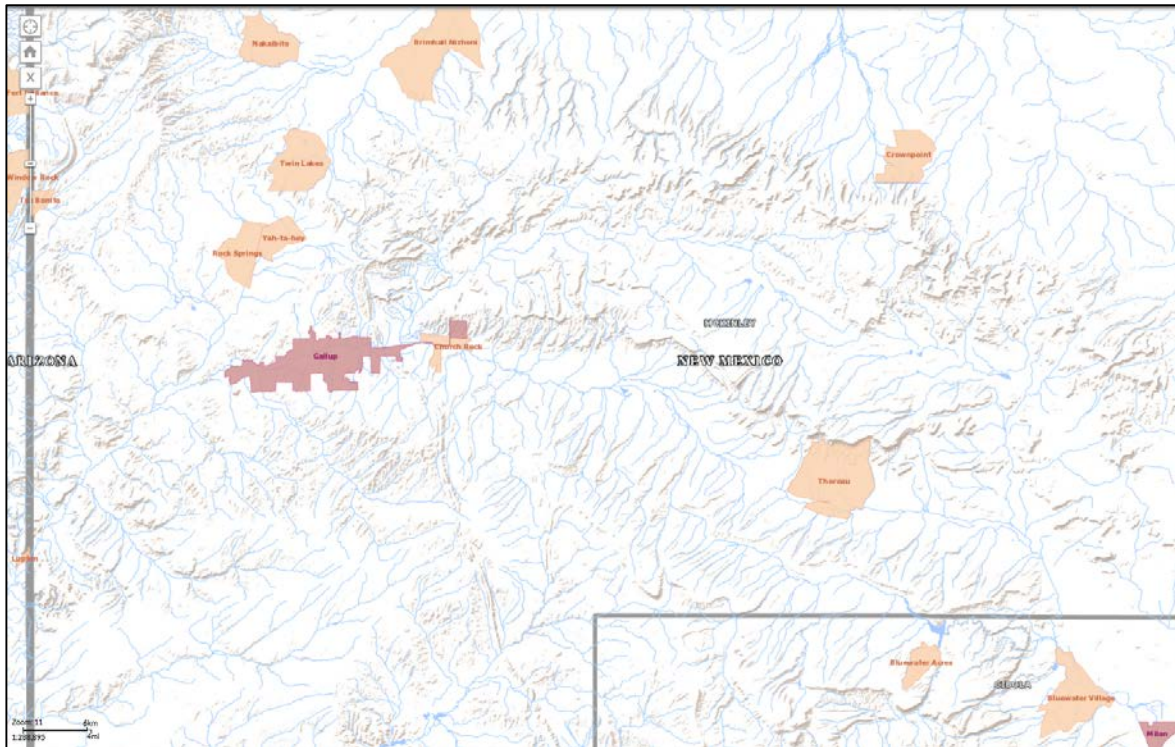
<https://www.census.gov/geographies/reference-files/time-series/geo/bas/new-annex.html>

- Three new incorporated places since 2010.
 - Anthony city (Doña Ana County)
 - Kirtland town (San Juan County)
 - Rio Communities city (Valencia County)
- All three were census designated places (CDPs) in 2010
- The total number of CDPs in New Mexico increased from 341 in 2010 to 422.

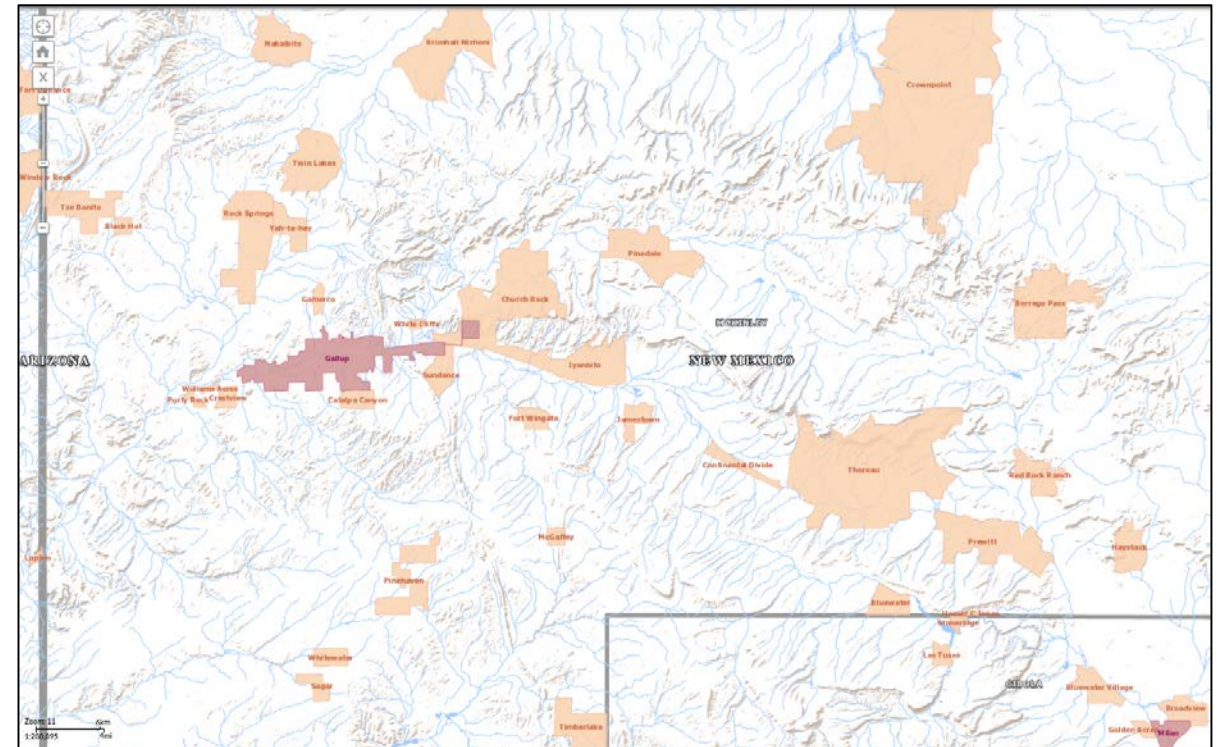


Changes to CDPs: McKinley County, 2010 to 2020

2010 Census



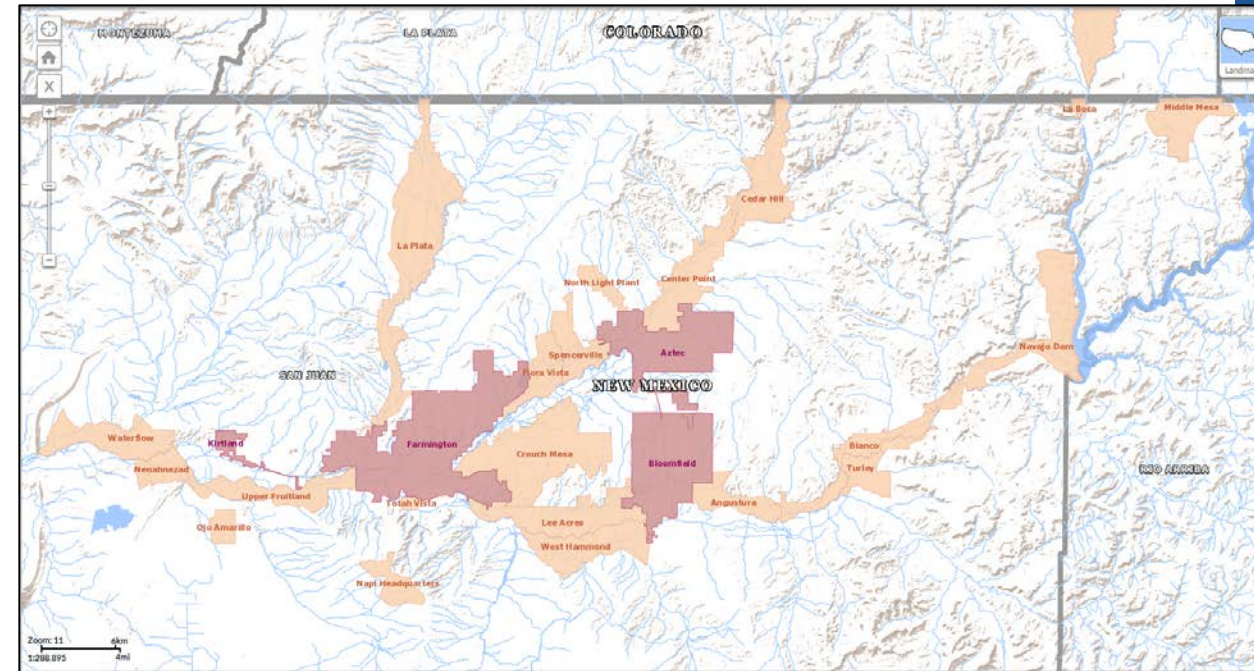
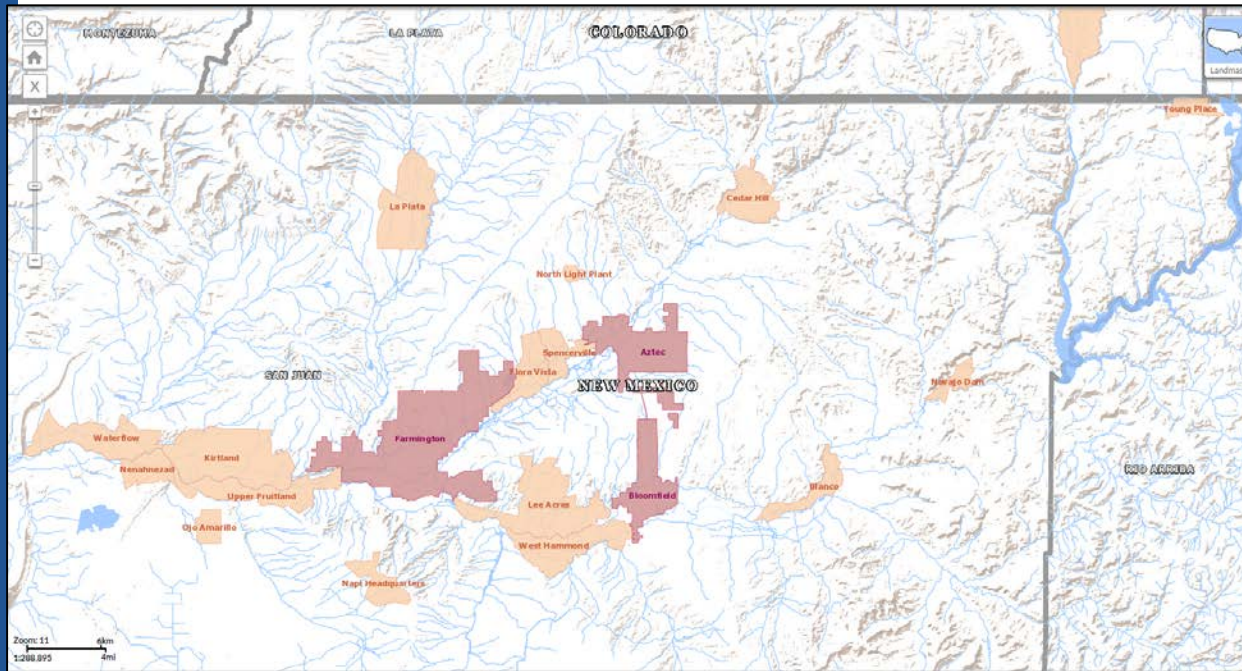
2020 Census



Changes to CDPs: San Juan County, Farmington area, 2010 to 2020

2010 Census

2020 Census



New Mexico Colonias and Census Designated Places

- 74 of New Mexico's 143 colonias are defined as census designated places.
 - New for the 2020 Census:
 - Alma (Catron County)
 - Catfish Farms (Old Town CDP, Luna County)
 - Mogollon (Catron County)
 - Redrock (Grant County)
 - Tortugas (Doña Ana County)
- 14 colonias are incorporated places.



What else has changed?

- Traffic Analysis Zones and Traffic Analysis Districts have been discontinued. Transportation planners will use block groups and census tracts in their analysis and modeling. This led to a change in the special land use census tract and block group criteria and a focus on identifying areas with large numbers of workers.

Census Tract Types	Description	Population Thresholds	Housing Unit Thresholds	Area Measurement Thresholds	Employment Threshold
Standard Census Tract	Small statistical subdivisions of counties; emphasis on comparability over time to facilitate longitudinal analysis.	Optimum: 4,000 Min: 1,200 Max: 8,000	Optimum: 1,600 Min: 480 Max: 3,200	None	NA
Special Use Census Tract	A census tract encompassing an employment center, large airport, public park, public forest, or large water body with no (or very little) population or housing units.	None (or very little) or within the standard census tract threshold	None (or very little) or within the standard census tract threshold	At least comparable in size to surrounding standard census tracts	Suggested minimum of 1,200 workers or jobs when encompassing employment centers.

Defining "Employment Zone" and Special Land Use Census Tracts Change to census tract 6.04, Bernalillo County

2010 Census



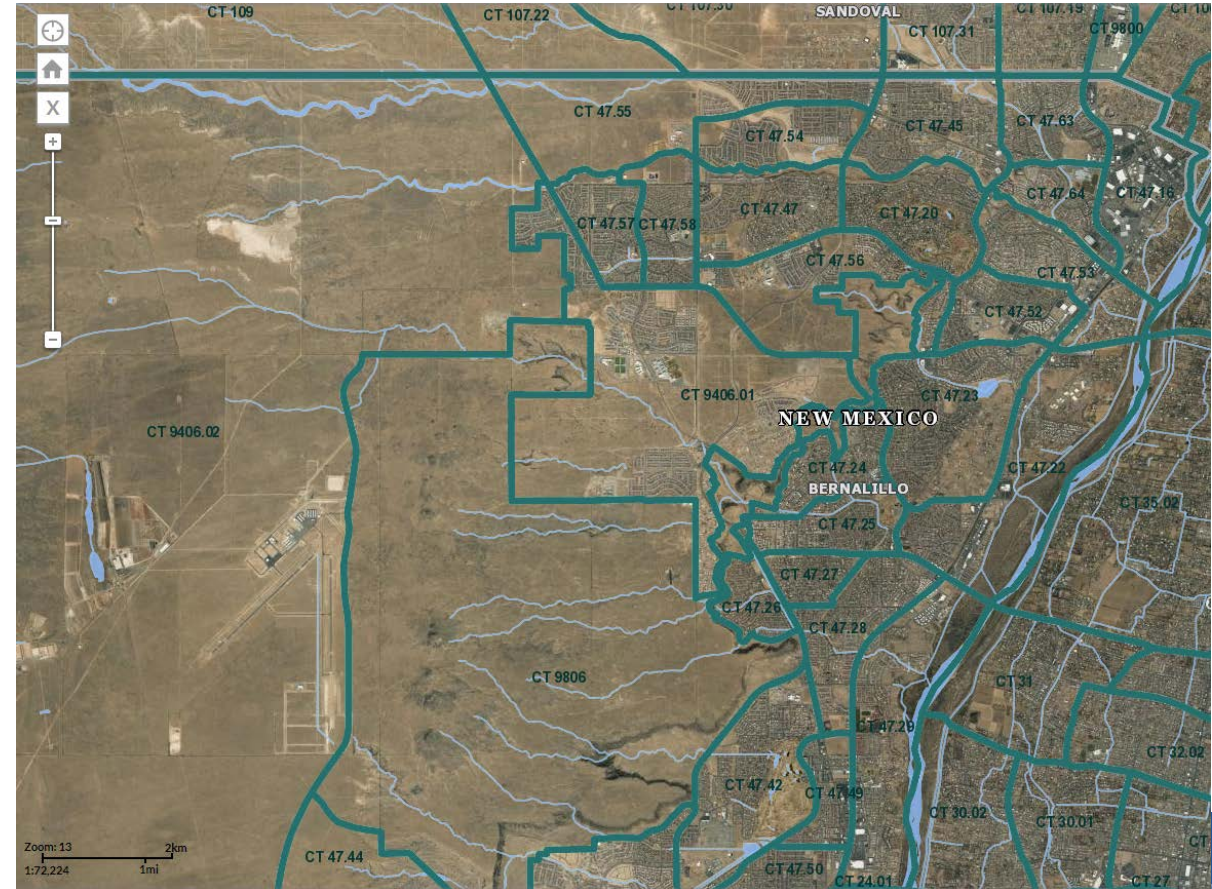
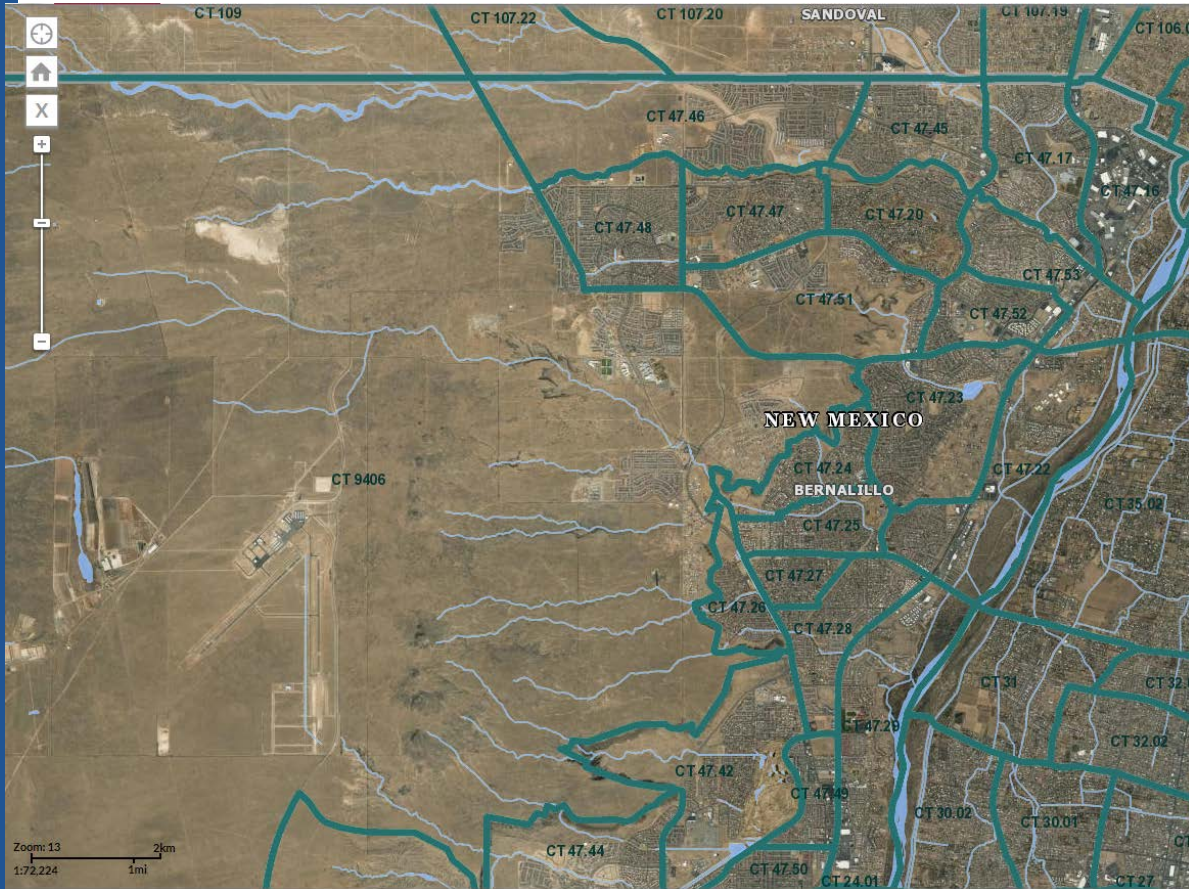
2020 Census



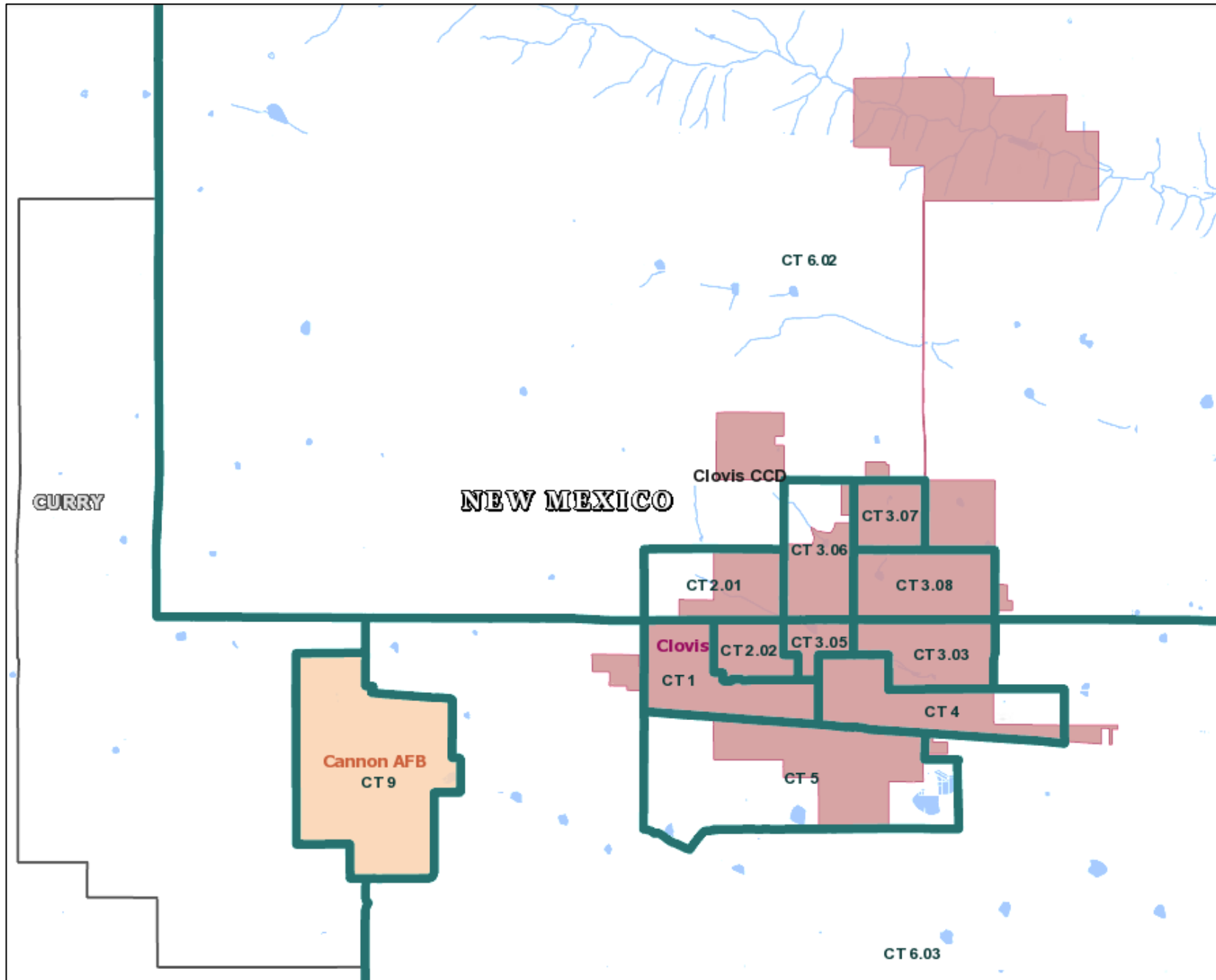
Census Tract Changes, Bernalillo County

2010 Census

2020 Census



Relationships between types of geographic areas: Clovis area



What's to come?

Delineation of:

- ZIP Code Tabulation Areas.
- Urban Areas.
- Public Use Microdata Areas.

- Updates to Congressional Districts and State Legislative Districts.

- Updates to Metropolitan and Micropolitan Statistical Areas and related statistical areas.

Proposed Changes to Urban Area Criteria

- Use of housing unit density instead of population density.
 - Proposed density: 385 housing units per square mile.
- Cease distinguishing between urbanized areas and urban clusters.
- Revise the minimum threshold for qualification as an urban area to 10,000 people or 4,000 housing units.
- Reduce the maximum jump distance from 2.5 miles to 1.5 miles.
 - Concern about overbounding of urban areas.
 - This would be a return to the maximum distance used from 1950 through 1990.
- Do not include hop and jump corridors in the urban area.
 - Will result in noncontiguous territory. This is similar to the approach taken in 1950.
- Use worker flow data from the Longitudinal Employer-Household Dynamics (LEHD) program to determine whether to split large agglomerations and, if so, where to draw the boundary.

Adoption of a Housing Unit Density Threshold for the Qualification of Census Blocks

385 housing units
(occupied or
vacant) per
square mile
density

Ability to update
extent of Urban
Areas between
censuses

More direct
measure of
developed
landscape

Census block-
level housing unit
counts invariant

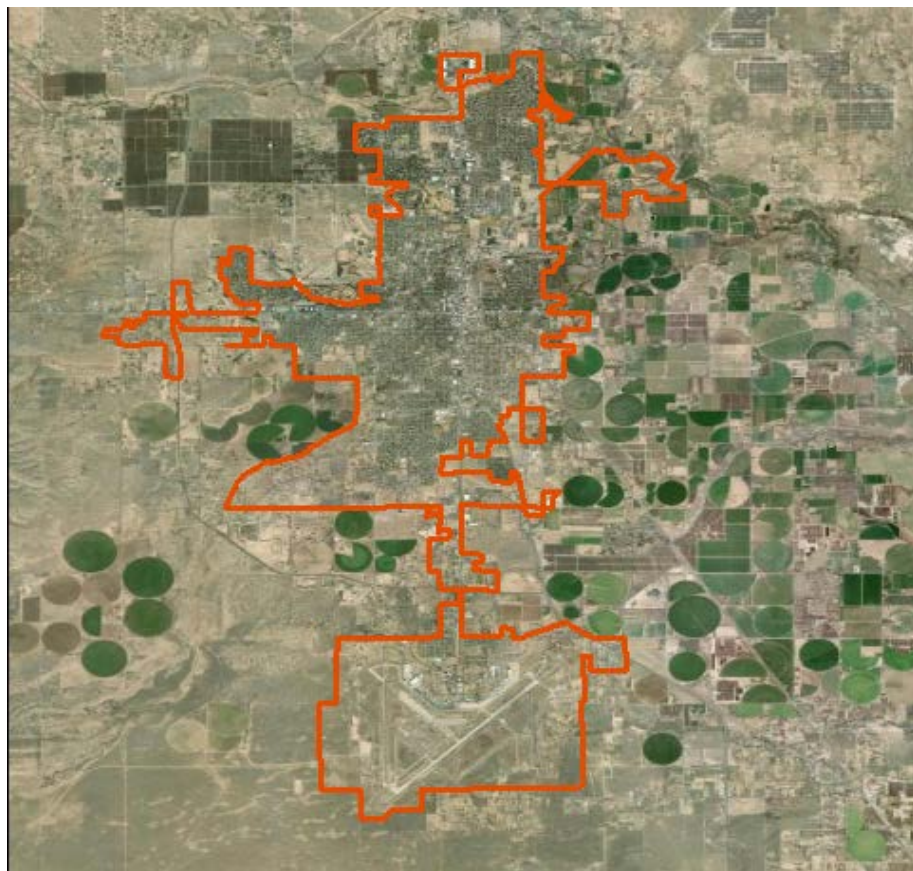


Proposed Changes to Urban Area Criteria

Why cease distinguishing between urbanized areas and urban clusters?

- There is no indication in scholarship that 50,000 is a meaningful threshold distinguishing fundamental differences between areas with populations on either side of the threshold.
- Sub-state population counts from the 2020 Census will be variant; i.e., noise will be introduced by the disclosure avoidance system. As a result, the total population for any urban area will be the sum of noisy block-level counts. The published population may not be the same as the enumerated population.
 - Agencies and data users can easily apply their own thresholds.
- Consistent with the decision to use housing unit density, adopt a 4,000 housing unit threshold as the minimum for identification of an area as urban, but also retain a minimum population threshold of 10,000 for those areas with persons per household rates above the national average of 2.6.

Cease Distinguishing Different Types of Urban Areas



Roswell, NM Urban Cluster
2010 population: 49,727



Grand Island, NE Urbanized Area
2010 population: 50,440

Cease Distinguishing Different Types of Urban Areas

Urban Area	2010 Census Population	Number of Firms	Population to Firm ratio	Retail Sales	Per capita retail sales
New Bern, NC	50,503	3,994	12.6	\$880,434,000	\$17,433.30
Grand Island, NE	50,440	4,366	11.6	\$1,198,923,000	\$23,769.29
Pascagoula, MS	50,428	4,083	12.4	\$851,756,000	\$16,890.54
Roswell, NM	49,727	3,317	15.0	\$863,103,000	\$17,356.83
Danville, VA-NC	49,344	3,314	14.9	\$985,916,000	\$19,980.46

2010 Census; 2012 Survey of Business Owners; 2012 Economic Census

Where to find geographic information?

Substantial County Changes:

<https://www.census.gov/programs-surveys/geography/technical-documentation/county-changes.html>

Geographic Boundary Change Notes:

<https://www.census.gov/programs-surveys/geography/technical-documentation/boundary-change-notes.html>

New Incorporations, Mergers, Consolidations, and Disincorporations

<https://www.census.gov/geographies/reference-files/time-series/geo/bas/new-annex.html>

TIGERweb

https://tigerweb.geo.census.gov/tigerwebmain/TIGERweb_main.html

https://tigerweb.geo.census.gov/tigerwebmain/TIGERweb_state_based_files.html

Thanks!

Questions? Comments?

Michael Ratcliffe

Geography Division

US Census Bureau

michael.r.ratcliffe@census.gov