

Earnings and Employment Outcomes Data Using LEHD's Explorer Tools

New Mexico Data Users Conference
November 18, 2020

Presenter: Earlene Dowell

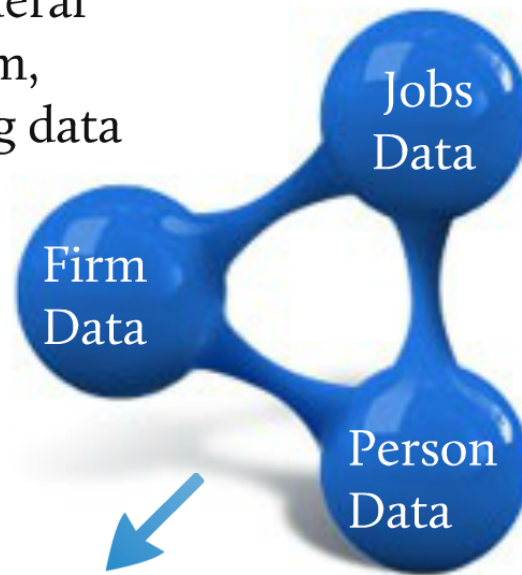


Shape
your future
START HERE >

United States[®]
Census
2020

What is LEHD?

An innovative federal statistical program, collecting existing data and ...



New linked national jobs data for the U.S.

The LEHD Program at Census

..linking it together to provide new information sources at low cost

Longitudinal Employer-Household Dynamics (LEHD)

Where Data is Published:

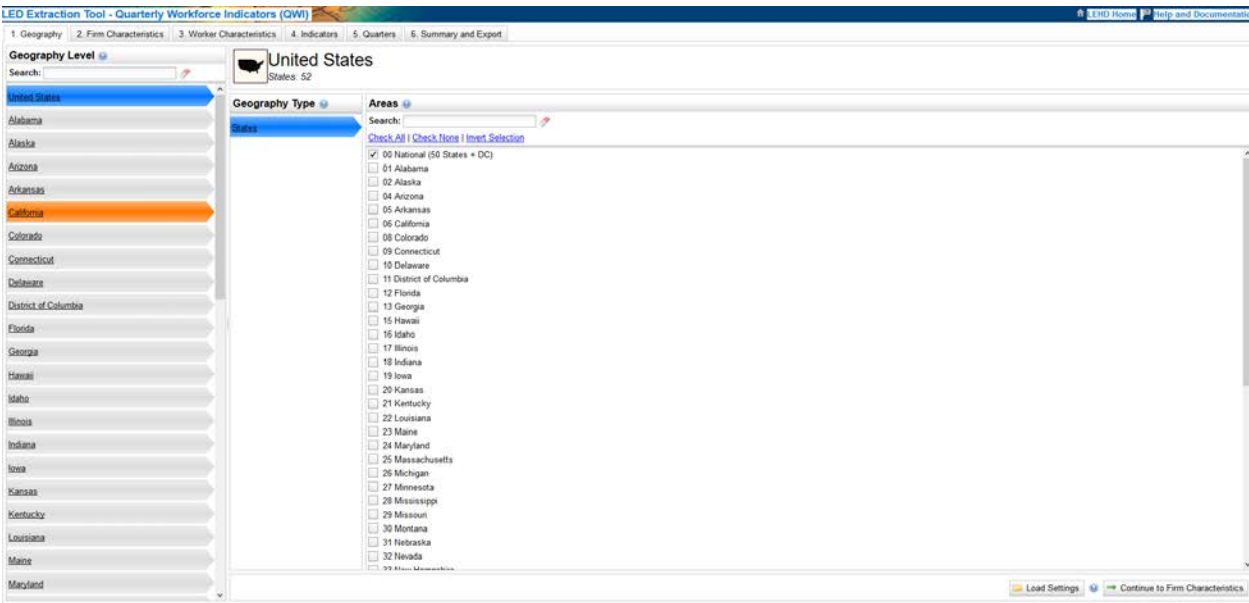
Data Product	Explore the data, answer questions, or get visualizations	Bulk data for use in analysis process/software	Live queries for building web applications
QWI	QWI Explorer	LED Extraction Tool and Raw data download	Census Bureau API
LODES	OnTheMap OnTheMap for Emergency Management	Raw data download	Future development
J2J	J2J Explorer	Raw data download	Future Development
PSEO	PSEO Explorer	Raw data download	Census Bureau API
VEO	VEO Explorer	Raw data download	Future Development



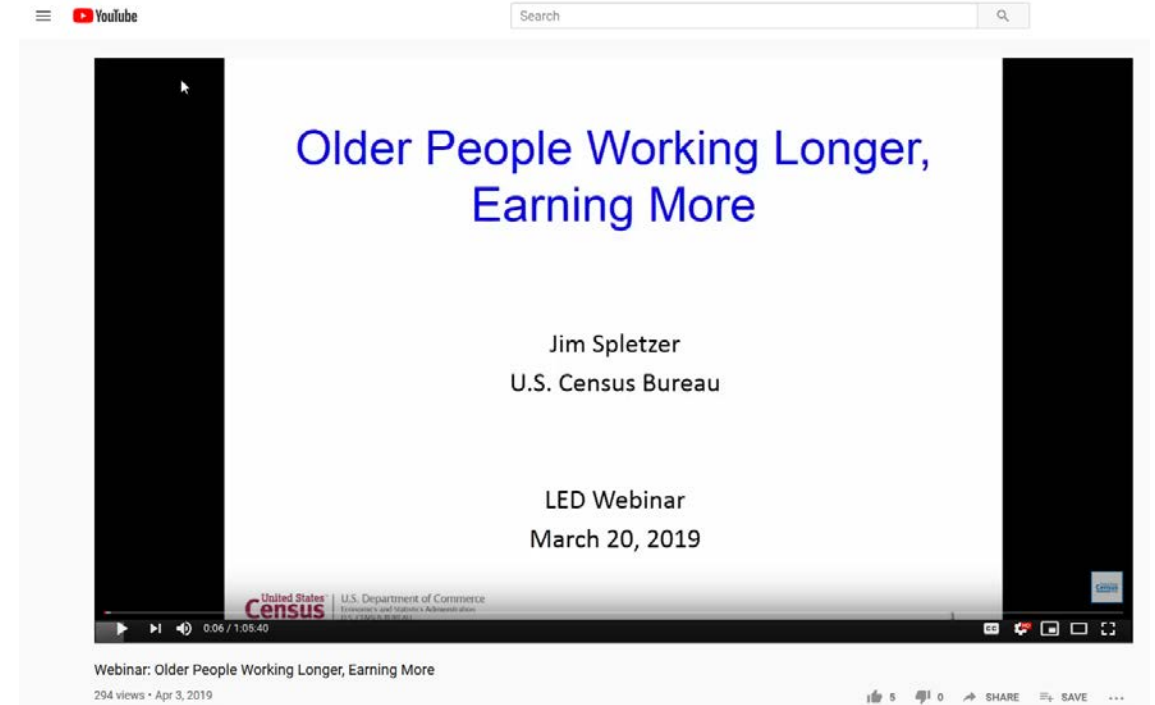
What Is Ahead for the Nation's Aging Workforce?

- 17 percent for workers aged 14-24, a \$245 increase from \$1,431 to \$1,676.
- 20 percent for workers aged 25-34, a \$600 increase from \$3,049 to \$3,649.
- 32 percent for workers aged 35-44, a \$1,254 increase from \$3,939 to \$5,193.
- 32 percent for workers aged 45-54, a \$1,390 increase from \$4,363 to \$5,753.
- 41 percent for workers aged 55-64, a \$1,629 increase from \$3,928 to \$5,557.
- 80 percent for workers aged 65-99, a \$1,816 increase from \$2,276 to \$4,092.

LED Extraction Tool



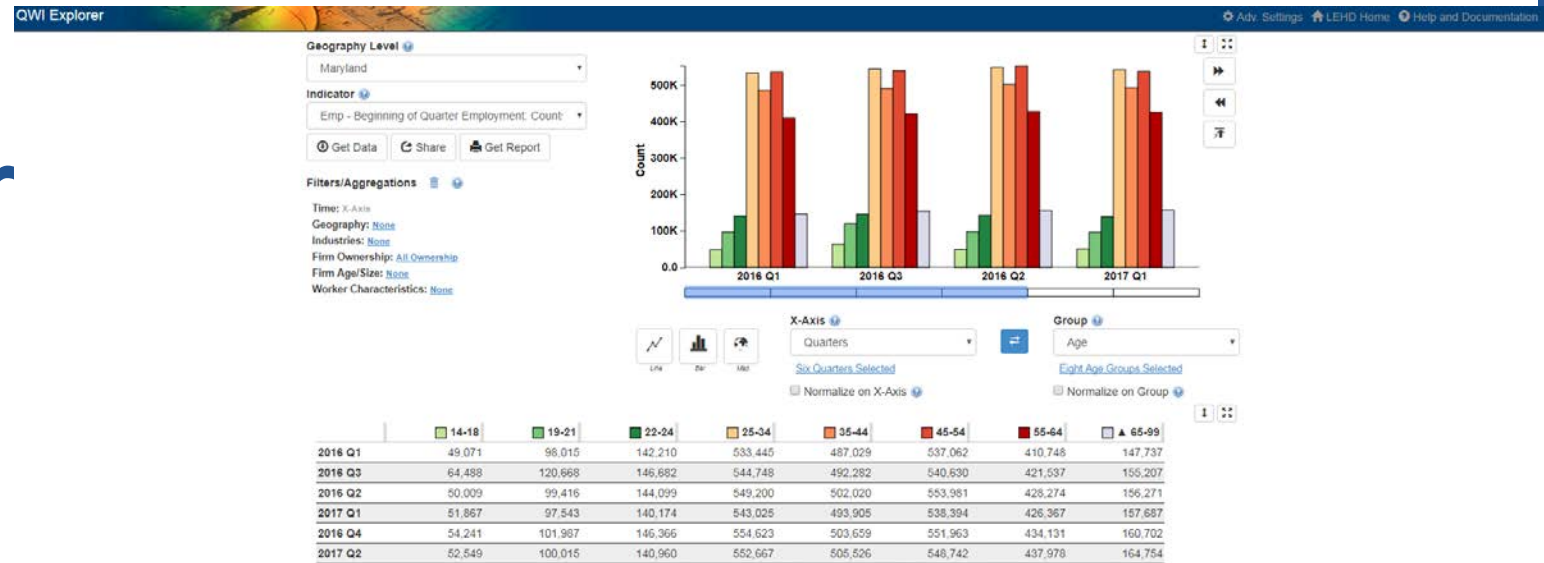
<https://ledextract.ces.census.gov/static/data.html>



<https://www.youtube.com/watch?v=AhFi59Fbzlw>

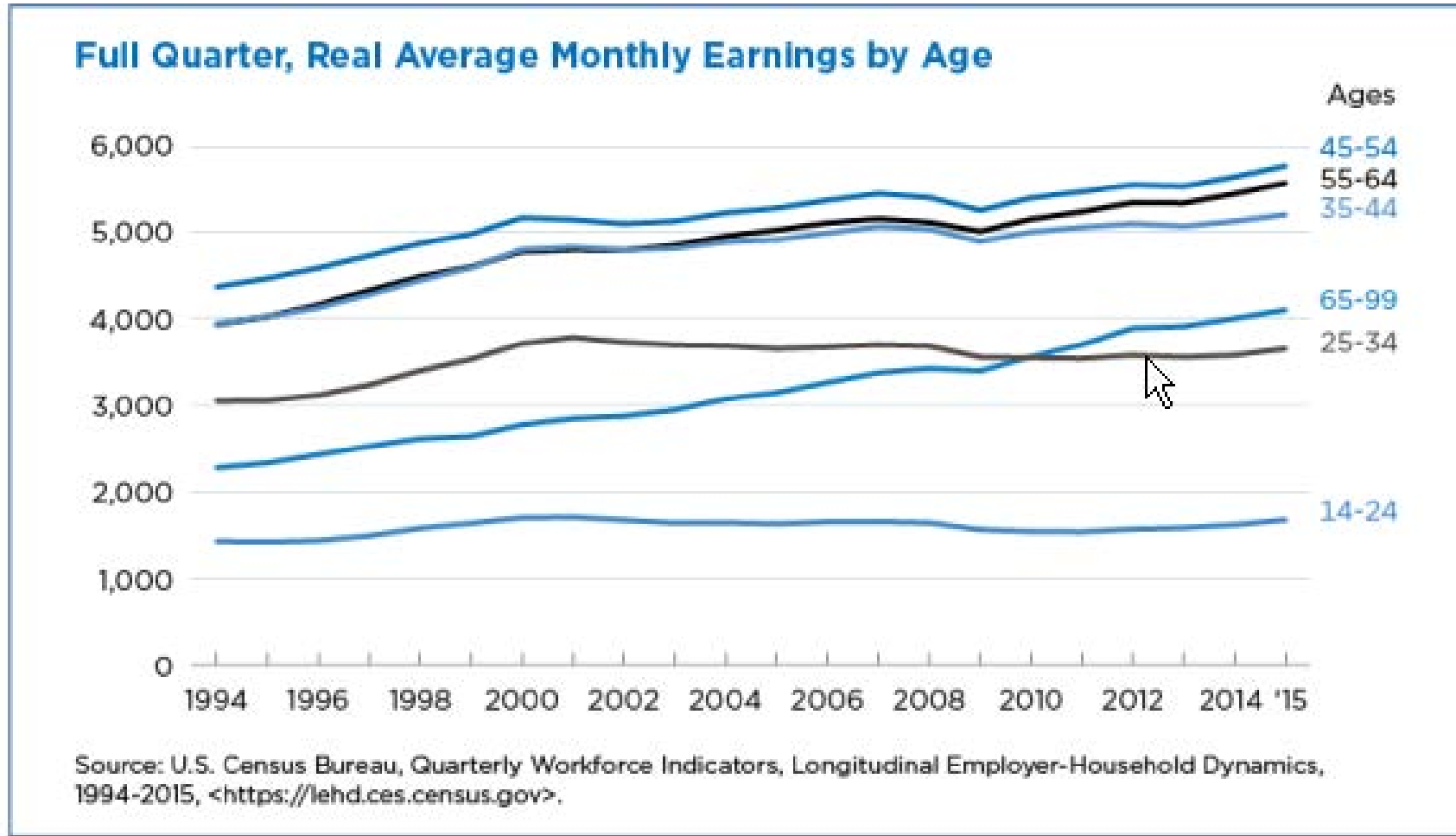
QWI Explorer

- ✓ 32 Quarterly Workforce Indicators
- ✓ Flexible Pivot Table and Map/Chart interface
- ✓ Data on detailed interactions between firms and workers include employment, employment change (individual and firm), and earnings
- ✓ Analyze/report by worker demographics: age, earnings, race, ethnicity, educational attainment, and sex



- ✓ Analyze/report by firm characteristics: NAICS classification (sector, 3, 4), firm age, and firm size
- ✓ Quarterly data very current (9-12 months old)
- ✓ National and 50 states available (plus DC)

Average Monthly Earnings by Age



National Yearly Earnings

QWI Explorer

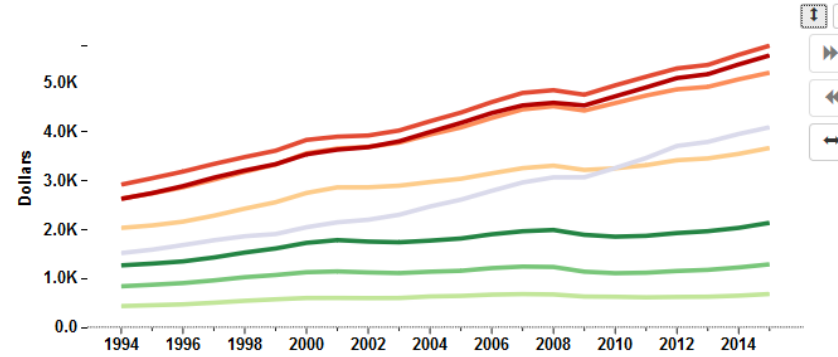
Geography Level
United States

Indicator
EarnS - Full Quarter Employment (Stable): Av

Get Data Share Get Report

Filters/Aggregations

Time: X-Axis
 Geography: None
 Industries: None
 Firm Ownership: All Private Ownership
 Firm Age/Size: None
 Worker Characteristics: None

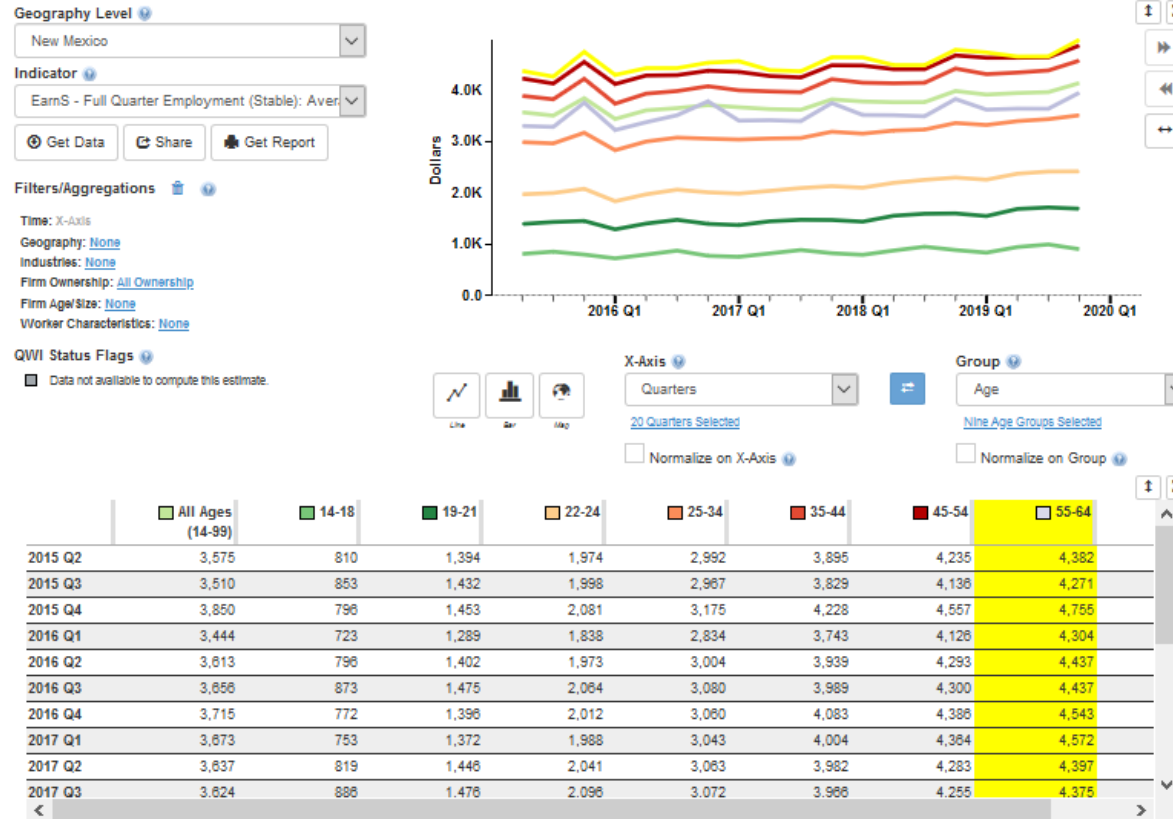


X-Axis
Yearly Averages
22 Years Selected
Normalize on X-Axis

Group
Age
Eight Age Groups Selected
Normalize on Group

	14-18	19-21	22-24	25-34	35-44	45-54	55-64	65-99
2004	638	1,143	1,778	2,975	3,945	4,217	3,998	2,476
2005	649	1,162	1,822	3,042	4,090	4,394	4,184	2,615
2006	675	1,217	1,908	3,153	4,283	4,608	4,385	2,796
2007	686	1,248	1,970	3,259	4,459	4,796	4,541	2,967
2008	679	1,240	1,996	3,310	4,523	4,852	4,595	3,071
2009	636	1,144	1,897	3,223	4,435	4,759	4,540	3,073
2010	631	1,113	1,859	3,255	4,589	4,951	4,726	3,261
2011	620	1,123	1,876	3,320	4,742	5,127	4,909	3,466
2012	628	1,158	1,933	3,421	4,869	5,297	5,099	3,713
2013	632	1,181	1,971	3,458	4,920	5,368	5,178	3,795
2014	654	1,231	2,039	3,551	5,074	5,575	5,378	3,957
2015	688	1,294	2,142	3,671	5,209	5,761	5,562	4,094

Earnings of Older Workers in New Mexico



What Industries Are Older Workers in New Mexico Working in?

Geography Level
New Mexico

Indicator
EarnS - Full Quarter Employment (Stable): Aver

Get Data Share Get Report

Filters/Aggregations

Quarters: [2019 Q4](#)

Geography: [None](#)

Industries: [X-Axis](#)

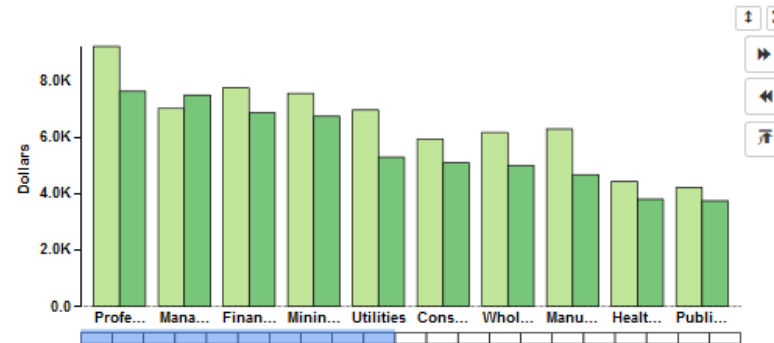
Firm Ownership: [All Ownership](#)

Firm Age/Size: [None](#)

Worker Characteristics: [None](#)

QWI Status Flags

No data available in this category for this quarter.



X-Axis
NAICS Sectors
21 NAICS Sectors Selected

Group
Age
Two Age Groups Selected

Normalize on X-Axis

Normalize on Group

	55-64	65-99
Professional, Scientific, and Technical Services	9,217	7,828
Management of Companies and Enterprises	7,020	7,492
Finance and Insurance	7,754	6,882
Mining, Quarrying, and Oil and Gas Extraction	7,552	6,742
Utilities	6,984	5,291
Construction	5,935	5,089
Wholesale Trade	6,170	4,999
Manufacturing	6,289	4,672
Health Care and Social Assistance	4,429	3,801

Spatial Mismatch: When Workers Can't Get to Jobs in the Suburbs



Employment



Job Sprawl Results in Unemployment for Low-Income Urban Residents

Shape
your future
START HERE >

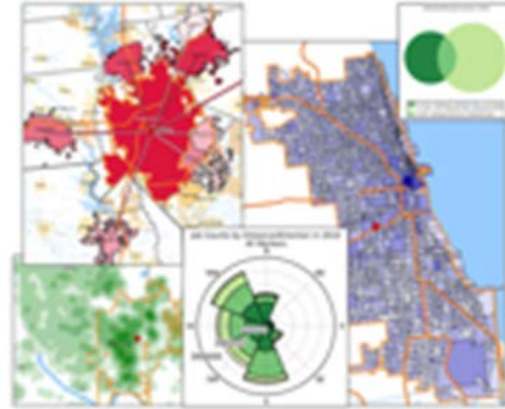
United States[®]
Census
2020

OnTheMap.CES.Census.Gov

OnTheMap

Recognized by United Nations as a major
U.S. statistical innovation

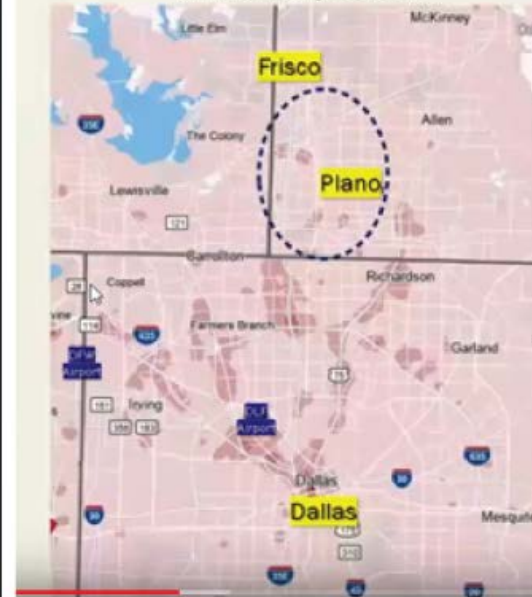
- ✓ Where do workers live?
- ✓ Where do residents work?
- ✓ What are the commuter flows of a particular area?
- ✓ Analyze/report by worker demographics: age, earnings, race, ethnicity, educational attainment, and sex
- ✓ Analyze/report by firm characteristics: NAICS Sector, firm age, and firm size



- ✓ 2002-2015 annual data
- ✓ 50 states available (plus DC)
- ✓ User-selected areas
- ✓ Based on Census Blocks
- ✓ Disclosure protection
- ✓ Flexible Inputs/Outputs

LEHD Historical Data: 2002-2015

Job Density: 2002

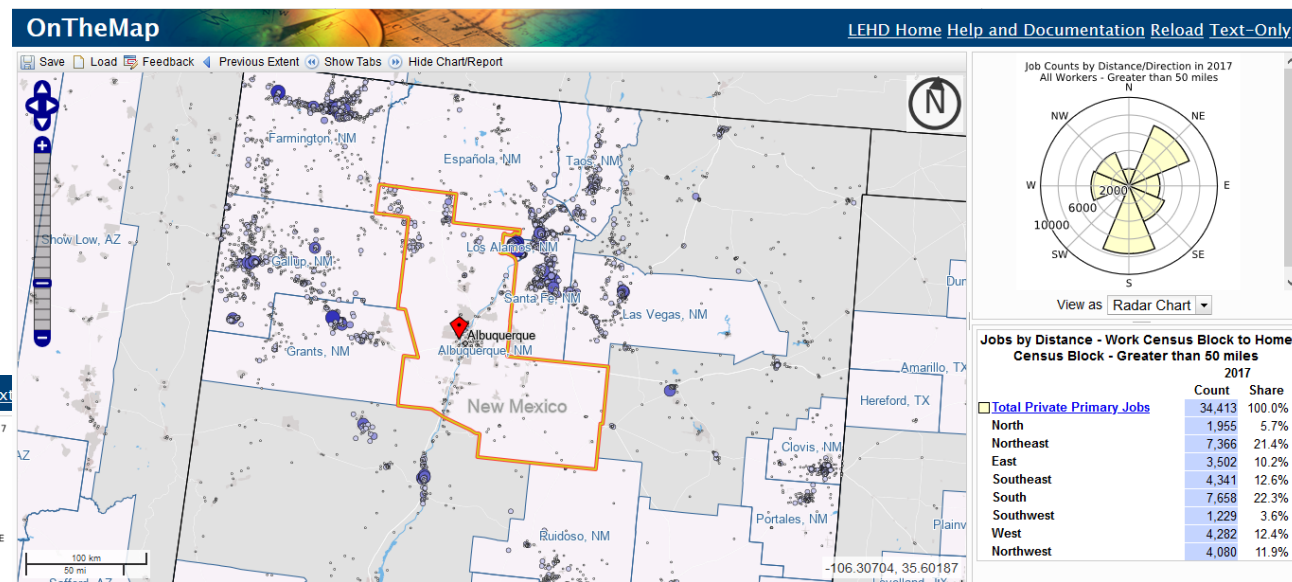
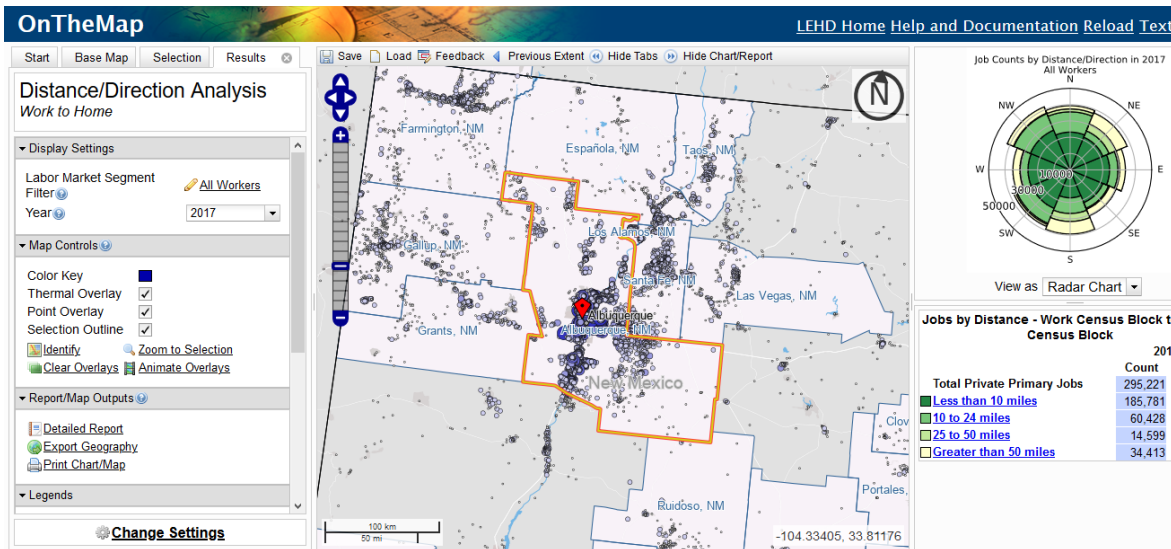


Job Density: 2015



Greater than 50 Miles from Albuquerque

Distance/Direction



<https://onthemap.ces.census.gov/em/>



OnTheMap for Emergency Management

[LEHD Home](#) [OnTheMap](#) [Help and Documentation](#)

Search:

Filter

Update (August 5, 2020): [Click here to read about application changes related to the COVID-19 Pandemic](#)

Events as of 11/13/2020

Hurricanes

Post-tropical

Florida, Georgia, North Carolina

Affected Population: 16,577,508

Tropical Storm Theta

No data

Affected Population: 0

Wildfires

Czu Lightning Fire

Santa Cruz County, CA, San Mateo County, CA

Affected Population: 5,459

Glass Fire

Napa County, CA, Sonoma County, CA

Affected Population: 5,283

Almeda Drive Fire

Talent city, OR, Phoenix city, OR, Ashland city, OR

Affected Population: 5,075

Lnu Lightning Complex Fire

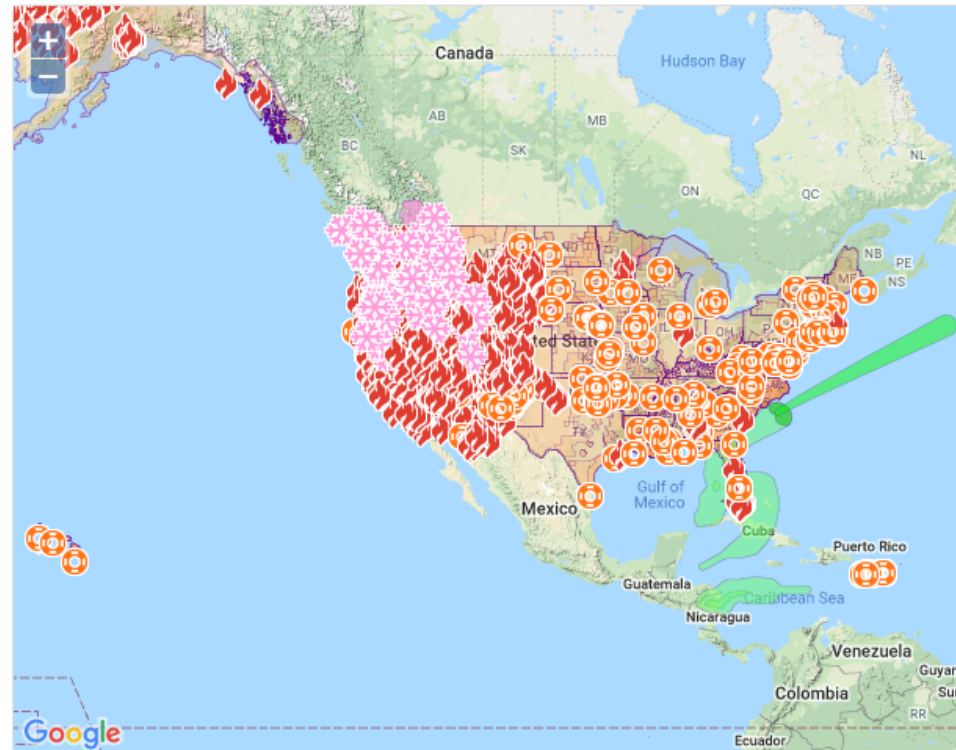
Napa County, CA, Yolo County, CA, Sonoma County, CA and 3 other Counties

Affected Population: 4,702

Claremont-Bear Fire

Plumas County, CA, Butte County, CA

Affected Population: 3,204



Legend & Map Controls

Event Types

- Tropical Storms
 - Current Wind Radii
 - Wind History (Cumulative Swath)
 - Forecast Area (Cone of Uncertainty)
- Wildfires
 - Perimeter
- Floods
 - Likely
 - Occurring or Imminent
- Winter Weather
 - Forecasted Snowfall
 - Forecasted Freezing Rain
- Disaster Declaration Areas
 - Emergency or Disaster Declaration
- COVID-19 Pandemic
 - Emergency or Disaster Declaration

Basemap:

Zoom To: AK HI US

Shape
your future
START HERE >

United States[®]
Census
2020

New Mexico Disaster Declarations and Emergency Declaration

The screenshot shows the OnTheMap for Emergency Management interface. At the top, there are browser tabs for 'Census Central - Home', 'Regional_Review_Summer_2013.pdf', 'LED in Action - Longitudinal Emplo', 'OnTheMap for Emergency Manage', and 'OnTheMap'. The address bar shows 'https://onthemap.ces.census.gov/em/'. The page header includes the 'United States Census Bureau' logo and the title 'OnTheMap for Emergency Management', along with navigation links for 'LEHD Home', 'OnTheMap', and 'Help and Documentation'.

The main content area features a search bar with 'new mexico' entered and a 'Filter' dropdown. A link for an 'Update (August 5, 2020)' is also present. Below the search bar, a list of 'Nearby Events' is displayed:

- COVID-19 Pandemic**
 DR-4529
 Catron County, NM, Socorro County, NM, Otero County, NM and 30 other Counties
 Affected Population: 2,059,184
- EM-3460**
 Catron County, NM, Socorro County, NM, Otero County, NM and 30 other Counties
 Affected Population: 2,059,184
- EM-3521**
 San Felipe Pueblo CDP, NM, Algodones CDP, NM
 Affected Population: 3,563
- EM-3519**
 Bernalillo County, NM, Valencia County, NM, Torrance County, NM
 Affected Population: 3,461
- EM-3520**
 Sandoval County, NM, Bernalillo County, NM
 Affected Population: 627

To the right of the list is a map of New Mexico showing various disaster declarations and emergency areas. A 'Legend & Map Controls' panel is open on the right side of the map, listing event types such as Tropical Storms, Wildfires, Floods, and Winter Weather, along with their corresponding symbols and colors. The 'Basemap' is set to 'Terrain'.

Accessibility | Information Quality | FOIA | Data Protection and Privacy Policy | U.S. Department of Commerce | Census Home
 Source: U.S.Census Bureau, Center for Economic Studies, LEHD | e-mail: CES.OnTheMap.Feedback@census.gov

Emergency Declaration – EM-3500

Emergency Declaration: EM-3500
Time: Fri, 13 Nov 2020 13:00:01 GMT
Export
Share
Close

Detail by: Characteristics
 Topic: 2014-2018 ACS Chara...

Analysis Area: [Event Area](#)

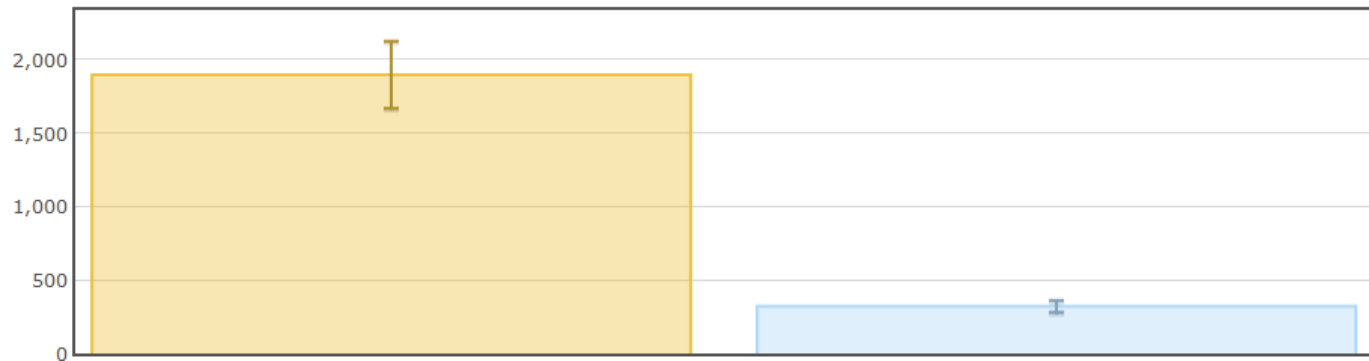
Household Type

Universe: Population in households
 Source: American Community Survey, 2014-2018. [Source info](#)
[>>](#)

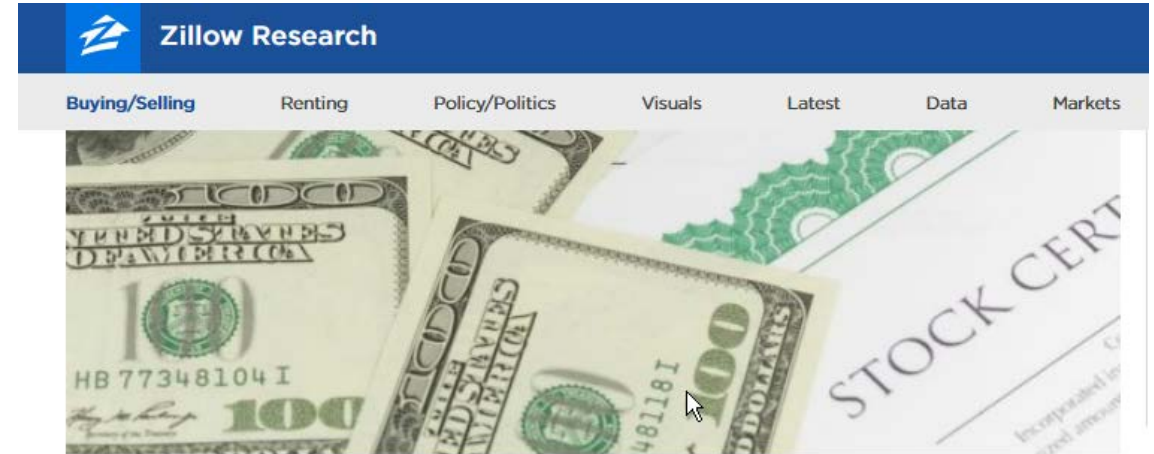
Characteristic	Estimate	Margin of Error
Total	2,216	±243
In family households	1,895	±228
In nonfamily households	321	±40

- ▶ Race
- ▶ Hispanic or Latino Origin
- ▶ Ability to Speak English by Age
- ▶ Ability to Speak English by Language Spoken at Home

All tabulations contain derived estimates and margins of error.



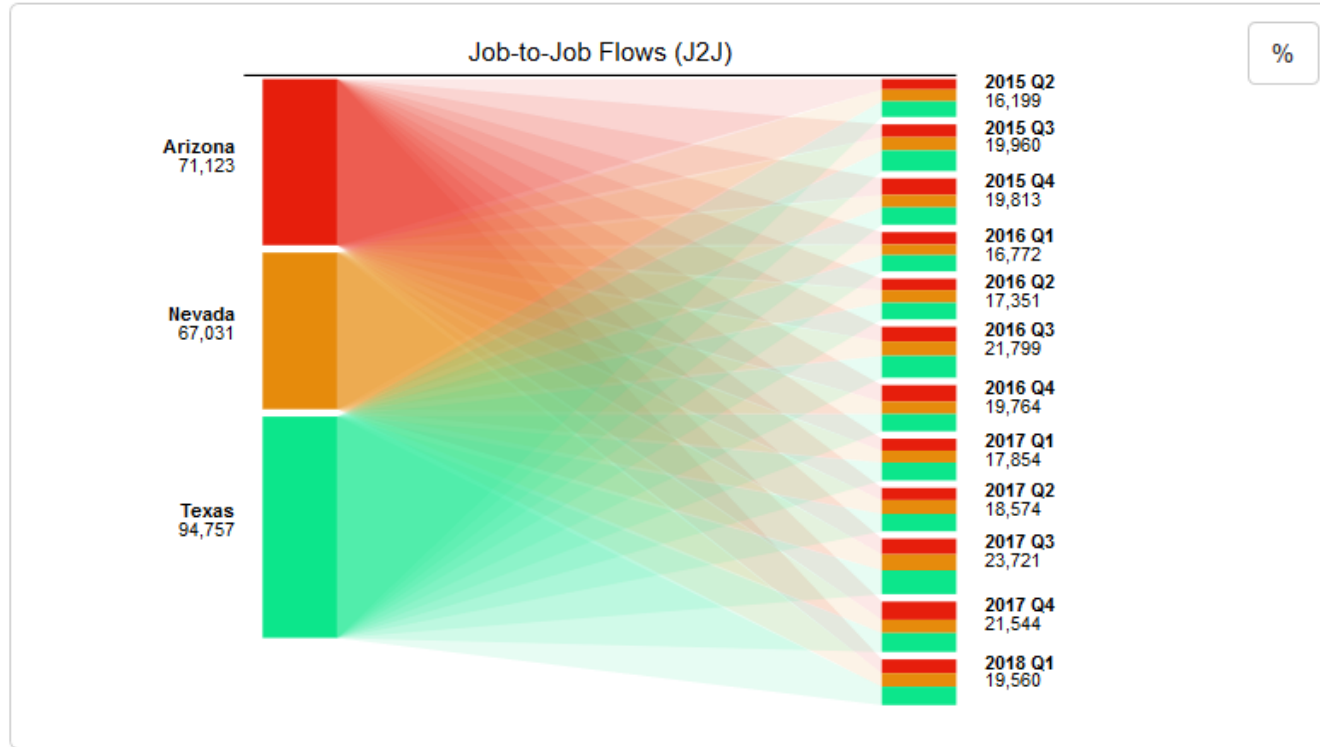
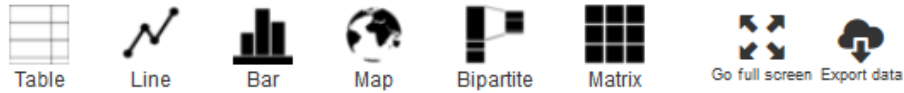
Facebook Headquarters - Menlo Park



Post-IPO, Home Values Grew Faster in Areas Home to Lots of Facebook Employees

By [Jeff Tucker](#) on Feb. 4, 2019

- Every 10 Facebook employees living in a given census tract at the time of Facebook's IPO in May 2012 were associated with an additional 1.6 percentage points of home value increase over that year.
- Between March 2012 and March 2013, home values around likely Facebook employees climbed 21 percent, compared to 17 percent in all other Bay Area census tracts.
- This faster growth translated into an extra \$29,800 in appreciation for the typical home in these Facebook-employee-heavy areas compared to homes in the rest of the Bay Area.



■ Arizona
 ■ Nevada
 ■ Texas

Job-to-Job Flows from California to Arizona, Nevada and Texas by Year/Quarter

2015 Q2 - 2018 Q1

Indicator ?

Job-to-Job Flows (J2J)

Job flows with a short or no observed nonemployment spell

Left Column ?

Destination State

Right Column ?

Year/Quarter

Arizona, Nevada, Texas

2018 Q1, 2017 Q4, 2017 Q3, 2017 Q2, 2017 Q1 and 7 Others

Add Comparison Indicator

None

🗑️ Clear All Notices

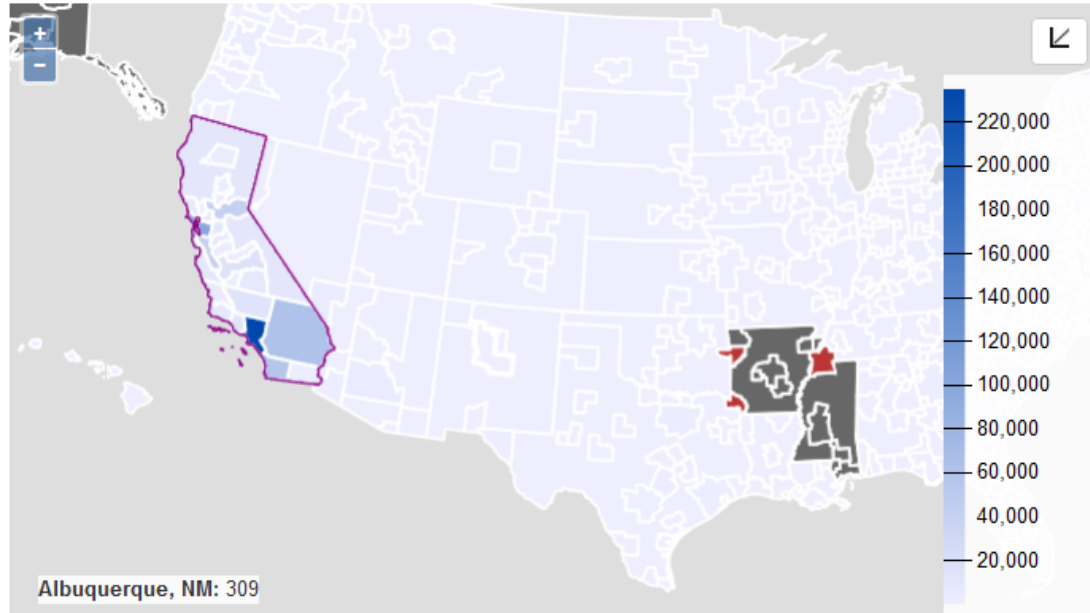
Filters ?

Firm Characteris

Partial Shares of Total Shown ✖

Consider selecting all characteristics for the selected Left or Right Column category to see percentages for the share of total.

J2J Explorer 1.0



■ Aggregate of cells not released because component cells do not meet U.S. Census Bureau publication standards ■ data not available to compute this estimate
■ Filtered Origin State

Job-to-Job Flows from California to 432 Metro Areas

Average of 8 Selected Quarters between 2015 - 2018

Indicator ⓘ

Job-to-Job Flows (J2J) ▾

Job flows with a short or no observed nonemployment spell

Geography Level ⓘ

Destination Metro Area ▾

[Abilene, TX](#), [Akron, OH](#),
[Albany, GA](#), [Albany-Lebanon, OR](#),
[Albany-Schenectady-Troy, NY](#) and 427 Others

Filters ⓘ

Time

Year/Quarter

[2018 Q4](#), [2018 Q3](#), [2018 Q2](#), [2018 Q1](#), [2015 Q4](#) and [3 Others](#)

Firm Characteristics

Origin NAICS Sector

[All](#)

Destination NAICS Sector

[All](#)

Worker Characteristics

Sex

[All](#)

Age

[All](#)

Education

[All](#)

Race

[All](#)

Ethnicity

...



Post Secondary Employment Outcomes - PSEO

A joint pilot project between university systems, state higher education systems, and the Census Bureau, the Post-Secondary Employment Outcomes (PSEO) are experimental tabulations providing national earnings statistics for graduates of post-secondary institutions.

- PSEO Provides
 - 25th, 50th, and 75th percentiles of annual earnings for college and university graduates.
 - Employment by industry and region of the country.
 - By degree level, degree major, and post-secondary institution.
 - One year, five years, and 10 years after graduation.

- Current PSEO partners:
 - The University of Texas system and Texas Coordinating Board (2017)/2020)
 - Colorado Department of Higher Education (2017)
 - University of Michigan, Ann Arbor (2018)
 - University of Wisconsin, Madison (2018)
 - State University of New York/City University of New York (2020)
 - Pennsylvania State University (2020)



NEWS > SKILLS BLOG

SHARE

Posts About Wage records

Groundbreaking Project Releases Nationwide Earnings of UT System Graduates

Mar 28, 2018 · By Christina Pena, @WorkforceDQC · Share this:

The University of Texas (UT) System recently published aggregated data on the earnings of its graduates who move out of state. Enabled by a unique partnership with the U.S. Census Bureau's Longitudinal Employer-Household Dynamics (LEHD) program, the project shows great promise for better information on the workforce outcomes of postsecondary programs and institutions nationwide.

The UT System makes this information available to the public via its online tool, [seekUT](#), which includes program level information by institutions within the UT System. The seekUT online tool now includes out-of-state as well as in-state data on graduates, showing their median earnings by program-level at one, five, and ten years after graduation, as well as their debt-to-income ratios. The tool also provides the percentage of students who pursue education beyond the baccalaureate level, and covers undergraduate, graduate, medical, and dental programs. Eventually, the project will release information disaggregated by U.S. region.



MORE IN THIS SECTION

- Skills Blog
- Latest News
- Press Releases

POSTS BY FEDERAL POLICIES

Select a Federal Policy ...

POSTS BY STATE POLICIES

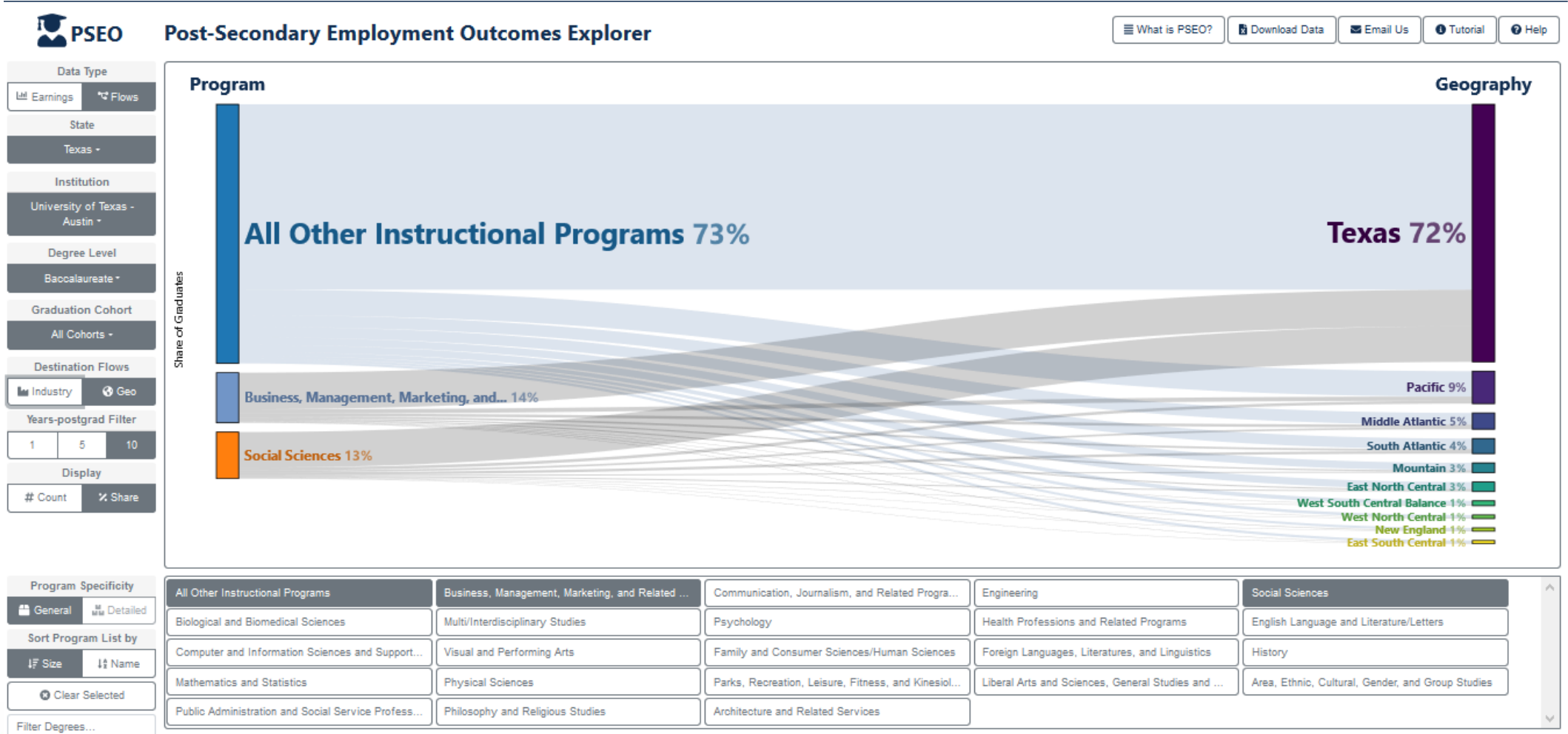
Select a State Policy ...

POSTS BY STATES

Select a State ...

POSTS BY NATIONAL INITIATIVES

Where Undergraduates Degrees 10-Years Post-Graduation Work

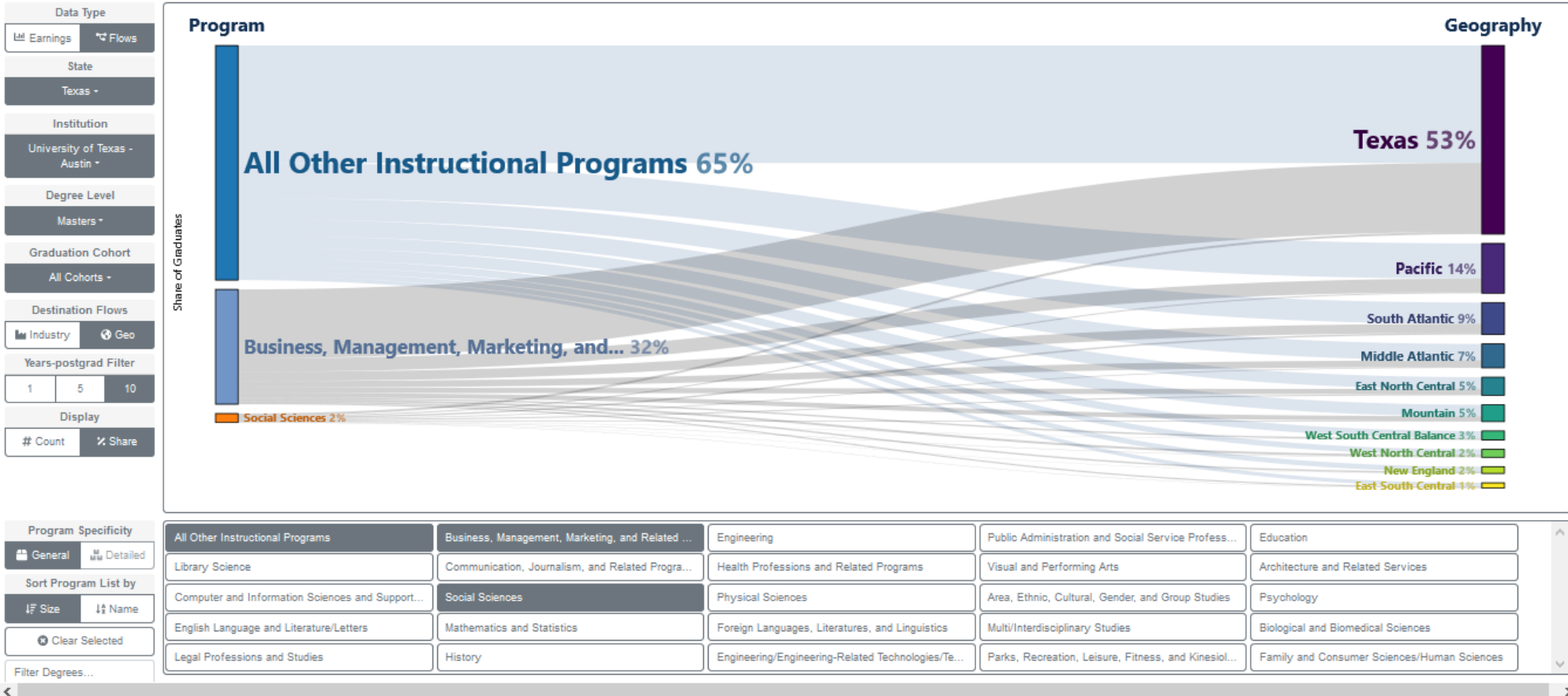


Where Graduate Degrees 10-Years Post-Graduation Work

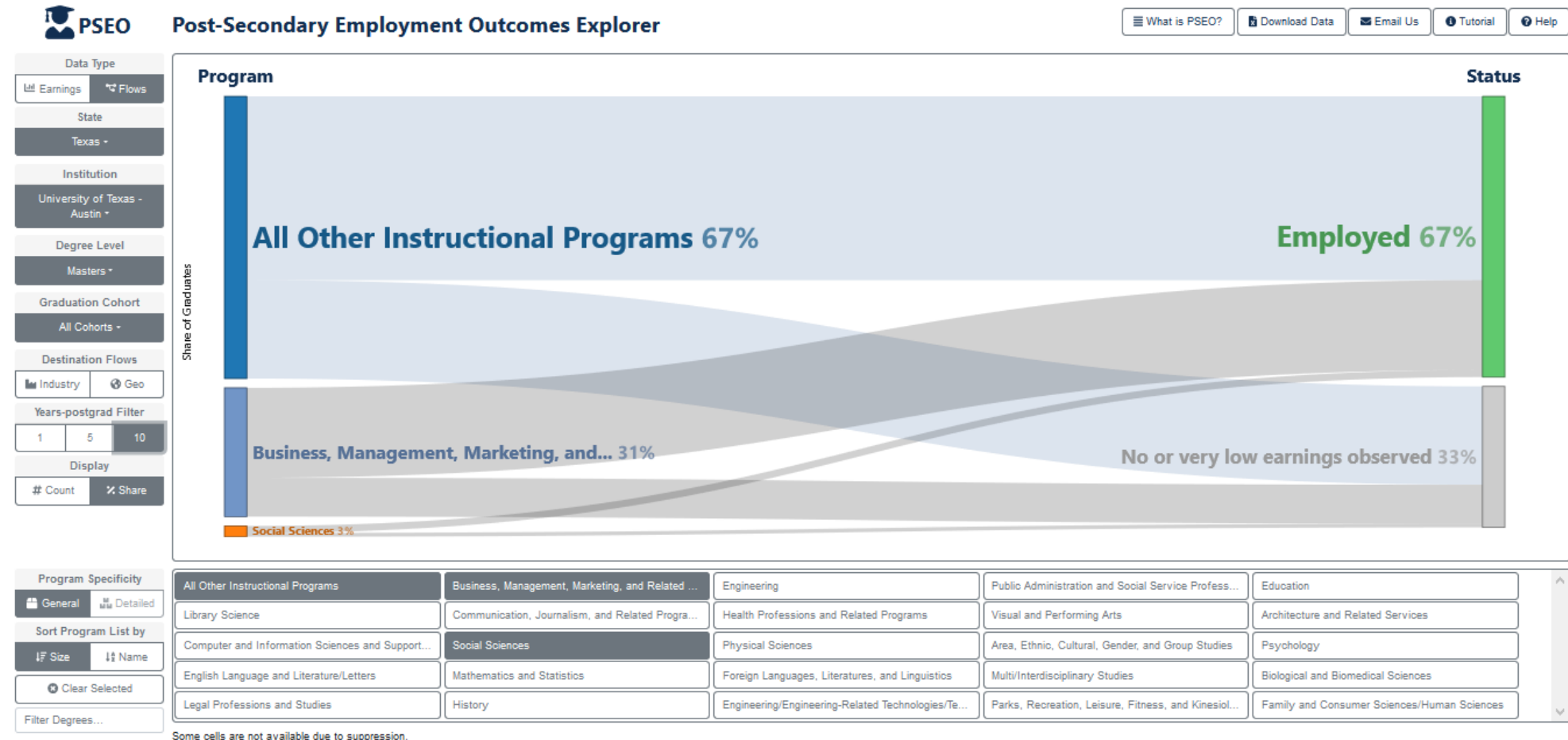


Post-Secondary Employment Outcomes Explorer

- What is PSEO?
- Download Data
- Email Us
- Tutorial
- Help



Graduate Degrees 10-Years Post-Graduation Employed



Veteran's Employment Outcomes

United States[™]
Census
Bureau

Search

BROWSE BY TOPIC EXPLORE DATA LIBRARY SURVEYS/ PROGRAMS INFORMATION FOR... FIND A CODE ABOUT US

// Census.gov > America Counts: Stories Behind the Numbers > How Do Recent Veterans Fare in the Labor Market?

Population



How Do Recent Veterans Fare in the Labor Market?

<https://www.census.gov/library/stories/2020/07/how-do-recent-veterans-fare-in-the-labor-market.html>

Veteran's Employment Outcome



Veteran Employment Outcomes Explorer

LEHD HOME

MILITARY SPECIALIZATION ▾ SERVICE CHARACTERISTIC ▾ DEMOGRAPHIC ▾ INDUSTRY ▾ STATE ▾ HELP



Occupation
3 Occupations Selected
Select Multiple Characteristics

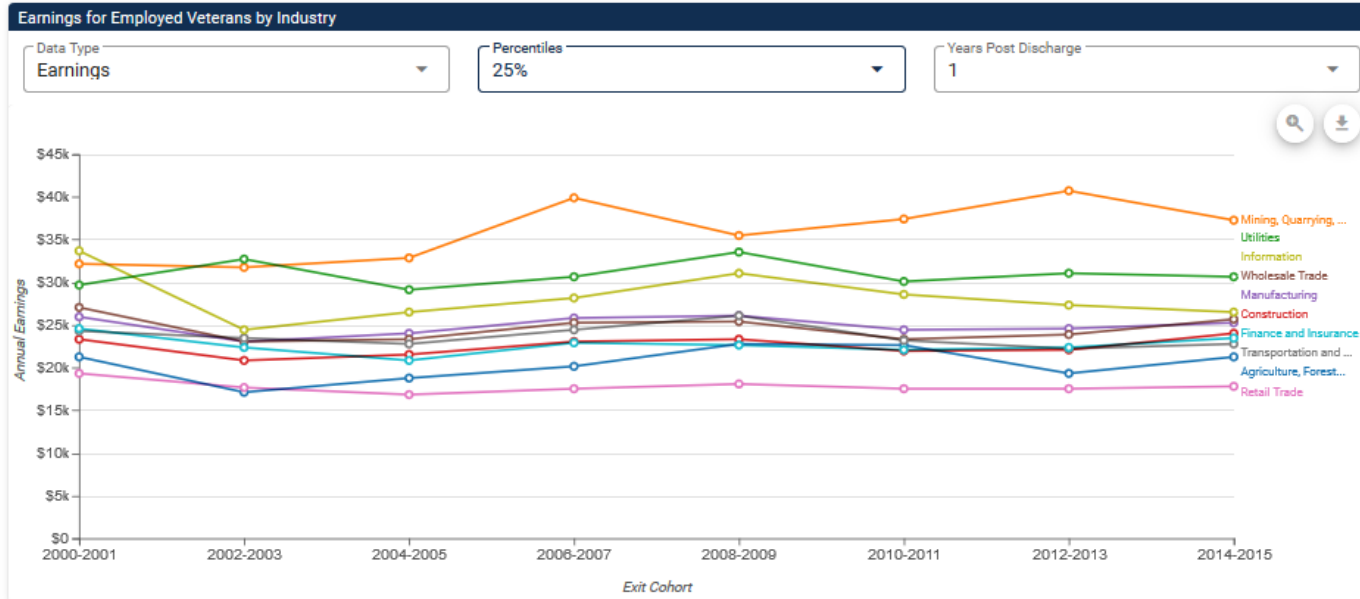
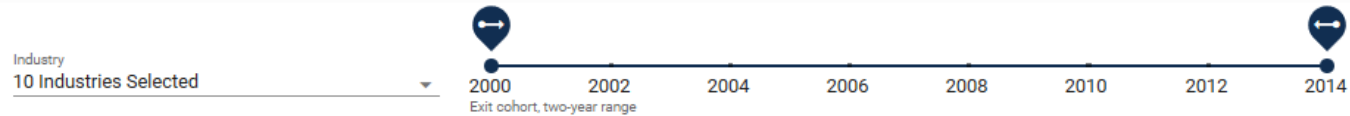


Cohort
2000-2007



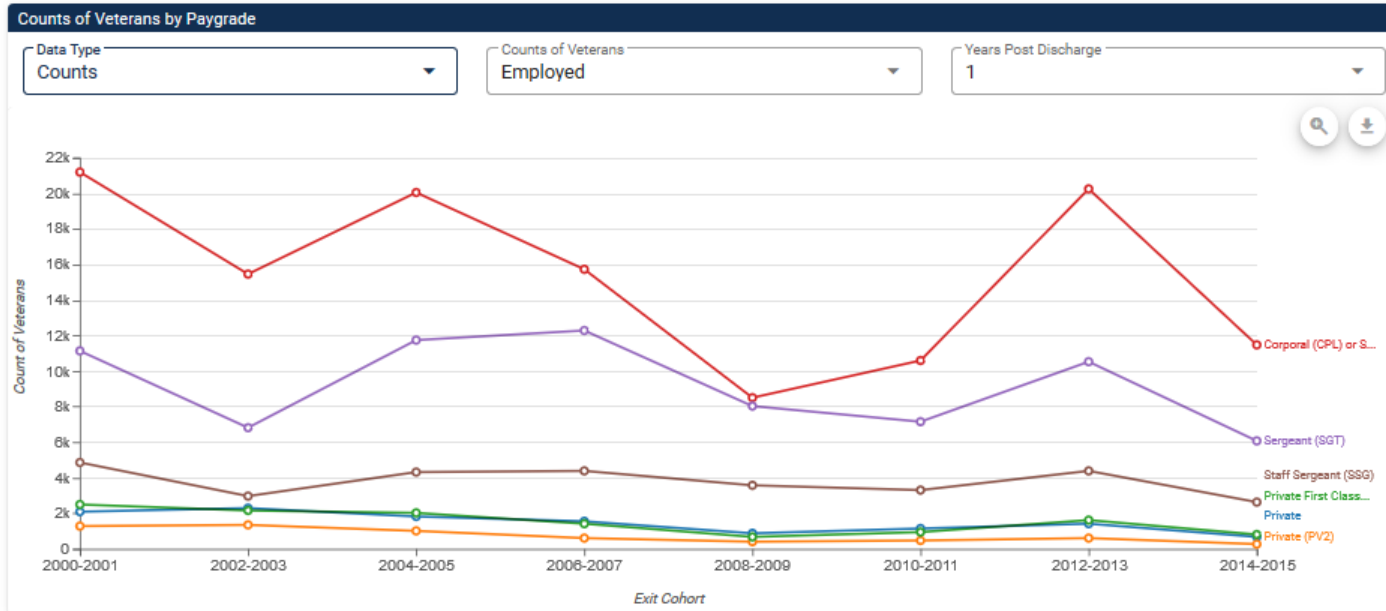
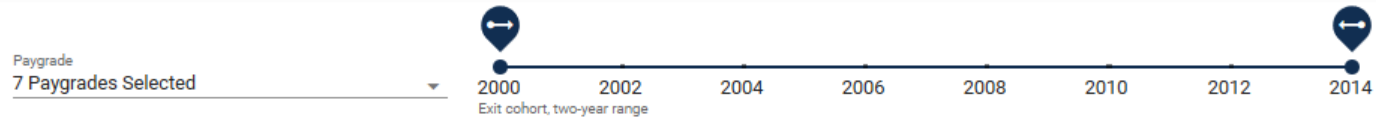
Industries

MILITARY SPECIALIZATION ▾ SERVICE CHARACTERISTIC ▾ DEMOGRAPHIC ▾ **INDUSTRY ▾** STATE ▾ HELP ?



Employment Rates

MILITARY SPECIALIZATION ▾ SERVICE CHARACTERISTIC ▾ DEMOGRAPHIC ▾ INDUSTRY ▾ STATE ▾ HELP ?



Takeaways: Why Are LED Data Tools Important?

Accessibility

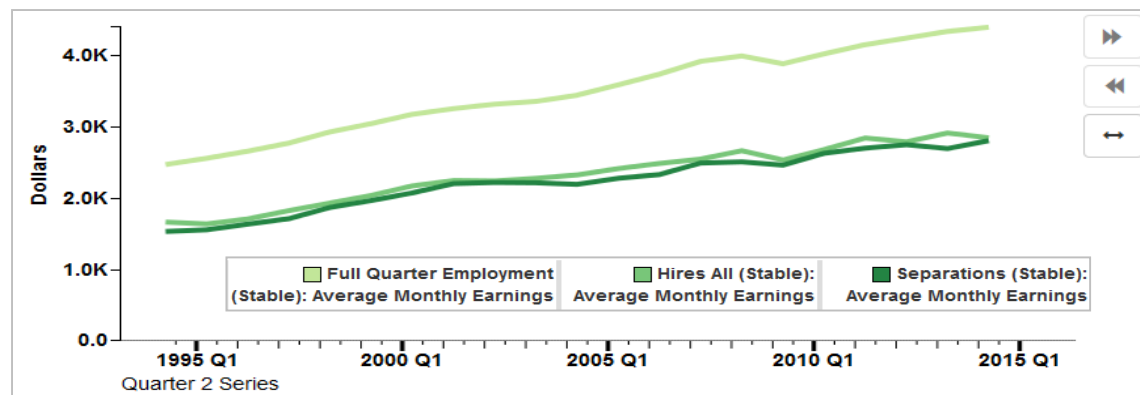
“Explorability”

Provide context

Visualizations lead to insight

Promote/market the data

Provide “value-add” for our state partners



Q & A and Thank You!

Contact:

Earlene.KP.Dowell@census.gov

301-763-9628

